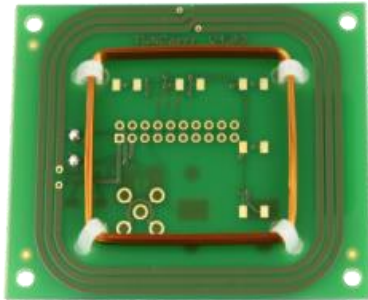


TWN4 MULTITECH DUAL ANTENNA PANEL*

125kHz+13.56MHz, TWN4 MultiTech Core

*previously known as Dual Antenna Panel



Bottom View



Top View

Technical Data

Dimensions	L x W x H: 56 x 46 x 6mm	
Compatibility	TWN4 MultiTech Core, TWN4 MultiTech Core LEGIC 42, TWN4 MultiTech Core LEGIC 45	
Frequency	125kHz, 134.2kHz (LF)	13.56MHz (HF)
Antenna	PCB	Aircoil
Inductance	490 μ H \pm 5%	n.a.
Impedance	n.a.	50 Ohm
Connectors	Pads	SMA SMB, SMC, MCX or UMCC/U.FL
Signals	<div style="display: flex; justify-content: space-around;"> <div style="text-align: center;"> <p>Front View</p> <p>All measures in mm</p> </div> <div style="text-align: center;"> <p>Side View</p> </div> </div> <div style="display: flex; justify-content: space-around; margin-top: 10px;"> <div style="text-align: center;"> <p>TWN4 MultiTech Dual Antenna Panel</p> </div> <div style="text-align: center;"> <p>TWN4 MultiTech Core</p> </div> </div>	
Order Code	ANT-022	
Options	The placement of a connector (pitch 2mm) is possible.	

Dimensions are approximate values only - more detailed datasheets are available on request.

Elatec reserves the right to change any information or data in this document without prior notice. The distribution and the update of this document is not controlled. Elatec declines all responsibility for the use of product with any other specifications but the ones mentioned above. Any additional requirement for a specific customer application has to be validated by the customer himself at his own responsibility. Where application information is given, it is only advisory and does not form part of the specification. Disclaimer: All names are registered trademarks. © 2015 Elatec GmbH – DocRev3 – 08/2015