

PRODUCT DATASHEET

is brought to you by



[SOS electronic](https://www.soselectronic.com/)

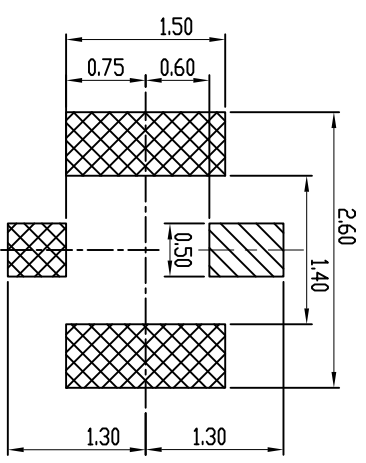
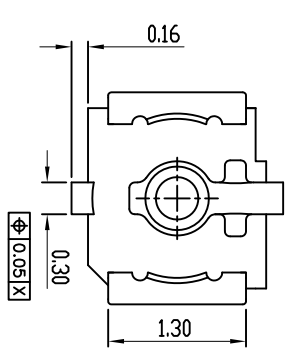
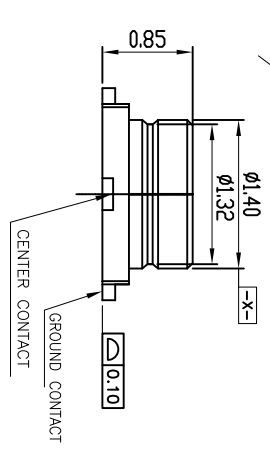
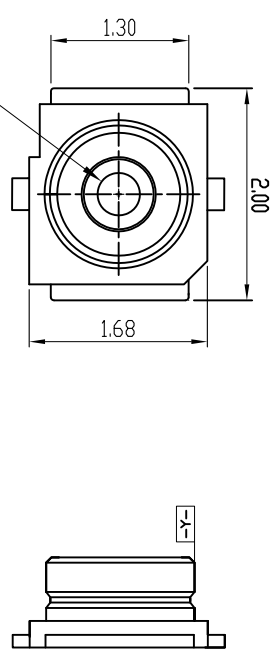
distribution of electronic components

Click to view availability, pricing and lifecycle information.

Visit <https://www.soselectronic.com/>

Datasheet begins on next page.

WHEN CARD IS ELECTED	WHEN CARD IS INSERTED	A	Housing	LCP UL94V-0, Color: Black
		B	Contact	Brass C2680, Gold Flash
		C	Ground	Phosphor Bronze, Gold Flash
		D		



RECOMMENDED PCB LAYOUT
(TOLERANCE:±0.05)

CENTER CONTACT
 GROUND CONTACT

SPECIFICATION:

1. ELECTRICAL
 - 1.1 Current Rating: 1A
 - 1.2 Voltage Rating: 60VAC
 - 1.3 Contact Resistance:
 - Inner Contact | Initially: 20mΩ
 - Ground Contact | Initially: 20mΩ
 - 1.4 Insulation Resistance: 500MΩ
 - 1.5 Dielectric Withstanding Voltage: 200VAC for 1 minute
 - 1.6 VSWR: 100MHz to 3GHz | 1.3Max
3GHz to 6GHz | 1.4Max
 - 1.7 Nominal Characteristic Impedance : 50Ω
 - 1.8 Applicable Frequency : 100MHz to 6GHz
2. MECHANICAL
 - 2.1 Durability: 30 Cycle
3. ENVIRONMENTAL
 - 3.1 Operating temperature range: -40°C to +85°C
 - 3.2 Storage temperature range: -40°C to +85°C
4. SOLDER ABILITY
 - 4.1 Recommended IR Reflow Temperature: 260°C

PIN ASSIGNMENT									

PRODUCT NO.	MRF3	MRF1 , Contact Area:Gold Flash	DESCRIPTION
-------------	------	--------------------------------	-------------



www.attend.com.tw

DRAWN NAME: Micro Coaxial RF Connector 0.85mm Hight

REV.	DESCRIPTION	DATE	REV.	DESCRIPTION	DATE	SIZE	REV.	FILE NAME
1						A4	1.0	321B-22085_B_1
2								
3								
4								
5								
6								
7								
8								
9								
10								

UNLESS OTHERWISE SPECIFIED TOLERANCE:	ANGLES	ANG.	±5°
	LINEAR	0.	±0.3
		±0.25	±0.25
		±0.20	±0.20
	SCALE	AS SHOWN	UNIT: mm
	DRAWN	Willis	2014/07/17
	CHECKED	Angel	2014/07/17
	APPROVED	Ken	2014/07/17