

# SMD ONE PORT 423.22MHz SAW RESONATOR

ASR423.22E



RoHS  
Compliant



5 x 5 x 1.35mm

## STANDARD SPECIFICATIONS:

CHARACTERISTICS		UNIT	MIN.	TYP.	MAX.
Center Frequency Fo		MHz	423.145	423.220	423.295
Tolerance from Fo		KHz		±75	
Insertion Loss		dB	-	1.3	2.5
Quality Factor	Unloaded	-		12,300	
	50Ω loaded	-		1,900	
Temperature Stability	Turnover Temperature	°C	20.0	35.0	50
	Turnover Frequency	KHz		Fo	
	Freq. Temp. Coefficient	ppm/°C <sup>2</sup>		0.037	
Frequency Aging		ppm/year		<±10	
DC Insulation Resistance		MΩ	1.0		
RF Equivalent RLC Model	Motional Resistance R <sub>1</sub>	Ω		19	29
	Motional Inductance L <sub>1</sub>	μH		89.547	
	Motional Capacitance C <sub>1</sub>	fF		1.5808	
	Shunt Capacitance C <sub>0</sub>	pF		2.5	2.4
Operating temp.		°C	-40°C to +85°C		
Storage temp.		°C	-45°C to +85°C		
Max. Rating	DC voltage	V	±10		
RF Power Dissipation		dBm	0		

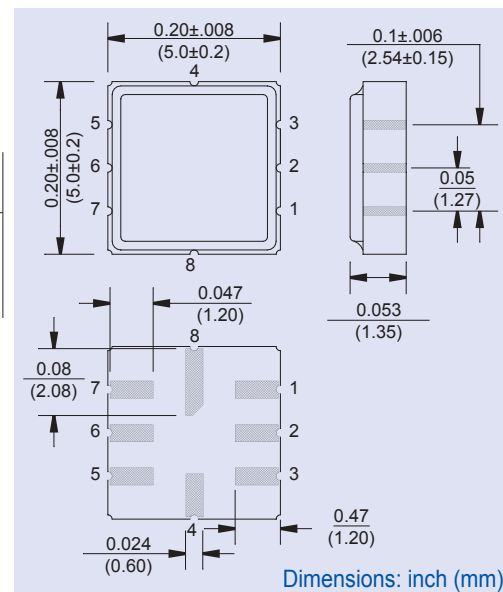
Data measured with: Source Impedance: Z<sub>s</sub>=50Ω, Load Impedance: Z<sub>L</sub>=50Ω, TA=25°C  
Electrostatic Sensitive Device. Handle with precaution.

## MARKING:

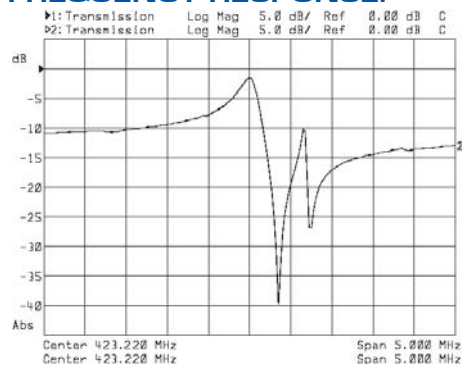
- 423.22R (423.22 Frequency in MHz)
- A ZYX (ZY: Date code Z for month from A to L; Y for year, i.e. 4 for 2004; X: Traceability code)

PIN NO.	CONNECTIONS
1	Input GND
2	Input
5	Output GND
6	Output
3,7	To be GNDed
4,8	Case GND

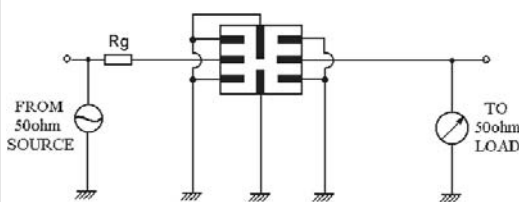
## OUTLINE DRAWING:



## FREQUENCY RESPONSE:



## TEST CIRCUIT:



**ATTENTION:** Abracon Corporation's products are COTS - Commercial-Off-The-Shelf products; suitable for Commercial, Industrial and, where designated, Automotive Applications. Abracon's products are not specifically designed for Military, Aviation, Aerospace, Life-dependant Medical applications or any application requiring high reliability where component failure could result in loss of life and/or property. For applications requiring high reliability and/or presenting an extreme operating environment, written consent and authorization from Abracon Corporation is required. Please contact Abracon Corporation for more information.

ABRACON IS  
ISO 9001:2008  
CERTIFIED



30332 Esperanza, Rancho Santa Margarita, California 92688  
tel 949-546-8000 | fax 949-546-8001 | [www.abracon.com](http://www.abracon.com)