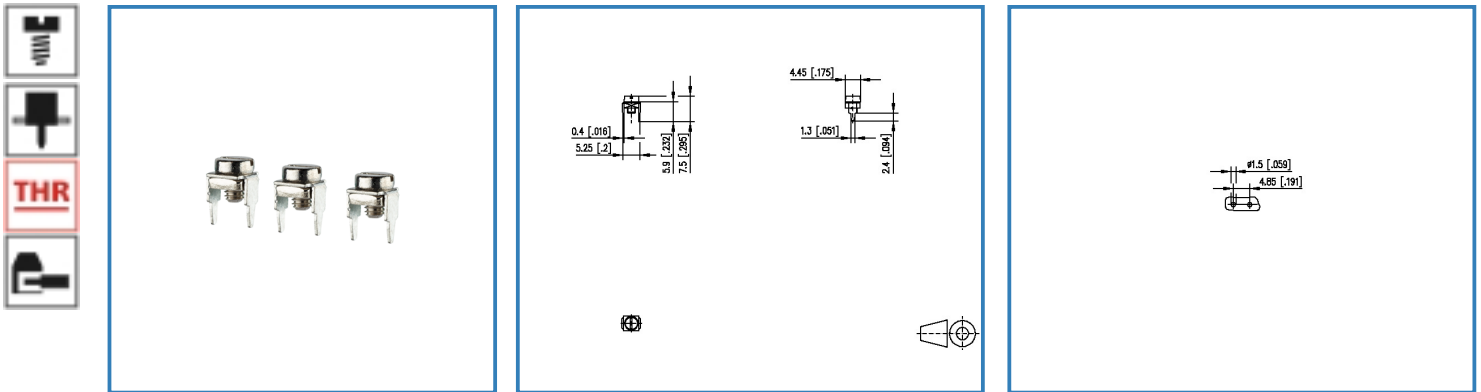


# Data Sheet

## Type 750122

### Illustration



see enlarged drawing at the end of the document

### Product specification

- screw type terminal block, THR solderable
- direction of connection 90°

© 2017 METZ CONNECT - Technische Änderungen vorbehalten! Subject to modifications! Sous réserve de modifications techniques!



# Data Sheet

## Type 750122

### Technical Data

#### General Data

Tightening torque SEV	0.4 Nm
Solder pin length	2.4 mm
min. number of poles	1
max. number of poles	1
protection category	IP 00

#### Connection data

Rated wiring solid wire	0.05 - 0.52 mm <sup>2</sup> / AWG 30 - 20
Rated wiring stranded wire	0.05 - 0.52 mm <sup>2</sup> / AWG 30 - 20

#### Approvals

0.05 - 0.52 mm <sup>2</sup>	AWG 30 - 20 /
-----------------------------	---------------

#### Material

contact material	CuSn
contact surface	Sn
terminal body material	CuZn
terminal body surface	Ni
screw surface	Ni
screw thread	M2.5

#### General

solderability	Acc. to IPC/JEDEC J-STD-020D-MSL 1
Tolerance	ISO 2768 -mH

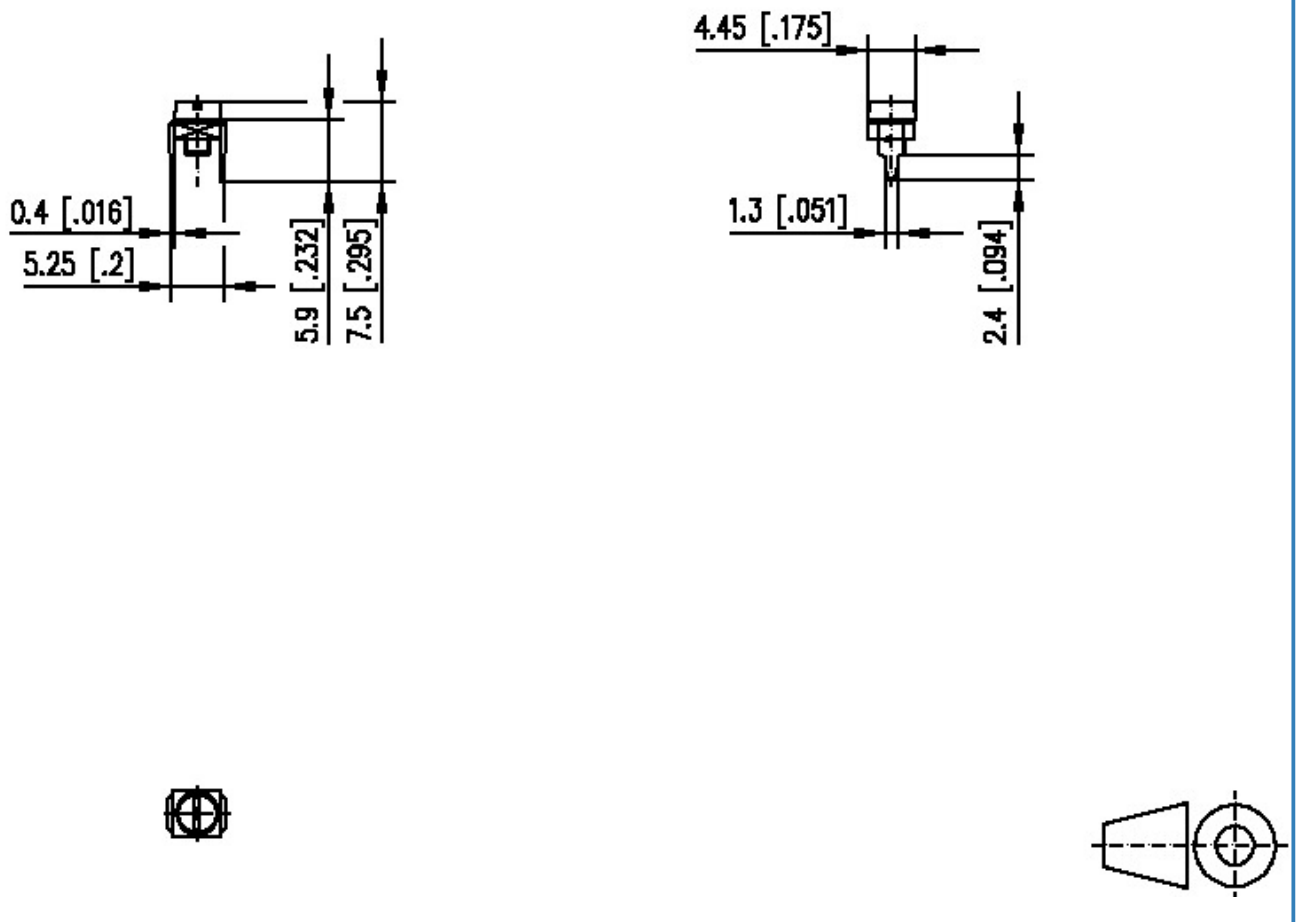


# Data Sheet

## Type 750122

### Illustration

Drawing



© 2017 METZ CONNECT - Technische Änderungen vorbehalten! Subject to modifications! Sous réserve de modifications techniques!



# Data Sheet

## Type 750122

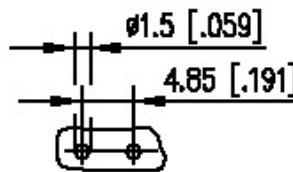
Page 4/4

P/N

750122

2018/02/01

PCB Layout



© 2017 METZ CONNECT - Technische Änderungen vorbehalten! Subject to modifications! Sous réserve de modifications techniques!

