

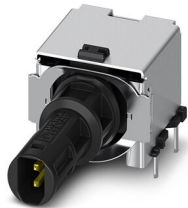
# SPE PCB connector - SPE-T1-M8MRM-90



1163795

<https://www.phoenixcontact.com/sk/products/1163795>

Please be informed that the data shown in this PDF document is generated from our Online Catalog. Please find the complete data in the user documentation. Our General Terms of Use for Downloads are valid.



SPE PCB connector, design: IEC 63171-5, degree of protection: IP20, number of positions: 2, CAT B (ISO/IEC 63171), connection method: THR solder connection, Single Pair Ethernet

## Your advantages

- Connectors in accordance with IEC 63171-2
- THR solderable
- Data transmission up to 600 MHz
- Packaging available for automated pick and place assembly

## Commercial Data

Item number	1163795
Packing unit	100 pc
Minimum order quantity	100 pc
Sales Key	ABN
Product Key	ABNIDA
GTIN	4063151176136
Weight per Piece (including packing)	8.33 g
Weight per Piece (excluding packing)	22.22 g
Customs tariff number	85366990
Country of origin	DE

1163795

<https://www.phoenixcontact.com/sk/products/1163795>

## Technical Data

### Product properties

Type	SPE
Product type	Female insert
Number of positions	2
Connection profile	SPE M8
Number of slots	1
Locking type	Screw locking
Shielded	yes
Thread type	M8

### Insulation characteristics

Overvoltage category	I
Degree of pollution	2

### Electrical properties

Rated voltage (III/2)	72 V DC
Rated surge voltage	2250 V DC
Rated surge voltage	1000 V DC
Rated current	4 A
Frequency range	5 Hz ... 500 Hz
Insulation resistance	> 1 TΩ
Contact resistance	20 MΩ (in accordance with IEC 63171)
Transmission medium	Copper

### Output data

Transmission frequency	600.00 MHz
------------------------	------------

### Connection data

#### Connection technology

Connection method	THR solder connection
-------------------	-----------------------

### Dimensions

Width	15.2 mm
Height	14.5 mm
Installed height	12.10 mm
Length	31.6 mm

### Material specifications

Flammability rating according to UL 94	V0
Contact material	Copper alloy
Contact surface material	Gold
Contact carrier material	LCP

1163795

<https://www.phoenixcontact.com/sk/products/1163795>

### Cable / line

Test voltage Core/Core	1000 V DC
Test voltage Core/Shield	2250 V DC
Halogen-free	yes
Resistance to oil	yes
Flame resistance	yes

### Mechanical properties

#### Mechanical data

Insertion/withdrawal cycles	≥ 100
Insertion force per signal contact	< 30.00 N (in accordance with IEC 63171)
Extraction force per signal contact	< 30 N (in accordance with IEC 63171)

### Environmental and real-life conditions

#### Ambient conditions

Degree of protection	IP65/IP67 (in combination with M8 housing screw connection)
Degree of protection	IP20
Ambient temperature (operation)	-40 °C ... 85 °C
Ambient temperature (storage/transport)	-40 °C ... 85 °C
Resistance to oil	yes

### Standards and regulations

Flame resistance	yes
Resistance to oil	yes

### Mounting

Mounting type	PCB mounting
---------------	--------------

#### Processing notes

Process	Reflow/wave soldering
Moisture Sensitive Level	MSL1
Solder cycles in the reflow	3

# SPE PCB connector - SPE-T1-M8MRM-90



1163795

<https://www.phoenixcontact.com/sk/products/1163795>

## Classifications

### ECLASS

ECLASS-9.0	27440402
ECLASS-10.0.1	27440390
ECLASS-11.0	27440390

### ETIM

ETIM 8.0	EC001121
----------	----------

### UNSPSC

UNSPSC 21.0	39121400
-------------	----------

# SPE PCB connector - SPE-T1-M8MRM-90



1163795

<https://www.phoenixcontact.com/sk/products/1163795>

## Environmental Product Compliance

China RoHS	Environmentally friendly use period: unlimited = EFUP-e No hazardous substances above threshold values
------------	-----------------------------------------------------------------------------------------------------------

# SPE PCB connector - SPE-T1-M8MRM-90



1163795

<https://www.phoenixcontact.com/sk/products/1163795>

## Accessories

### Housing screw connection

Housing screw connection - SACC-FP-M-M8/M10 SMD - 1412502

<https://www.phoenixcontact.com/sk/products/1412502>

Housing screw connection, Plug, M12, Front mounting, M10 x 0.75



---

### Housing screw connection

Housing screw connection - SACC-BP-M-M8/M12 SMD - 1412505

<https://www.phoenixcontact.com/sk/products/1412505>

Housing screw connection, Alternative product in accordance with RoHS II without Exemption 6c (Pb <0.1%) item no.: 1239002



---

Phoenix Contact 2023 © - all rights reserved

<https://www.phoenixcontact.com>

PHOENIX CONTACT s.r.o.

Námestie Mateja Korvína 1

811 07 Bratislava

+421 2 3210 1470

[obchod.sk@phoenixcontact.com](mailto:obchod.sk@phoenixcontact.com)