

REV.	DESCRIPTION	DRAWN	DATE
1	INITIAL RELEASE	FROS	2020/01/30

**SPECIFICATION:**

**1. ELECTRICAL**

- 1.1 Current Rating: 0.5A per pin
- 1.2 Voltage Rating: 10VDC
- 1.3 Contact Resistance: 100mΩ Max.
- 1.4 Insulation Resistance: 1000MΩ
- 1.5 Dielectric Withstanding Voltage: 500VAC

**2. MECHANICAL**

- 2.1 Durability: 5000 Cycle
- 2.2 Insertion Force: 10N Max.
- 2.3 Withdrawal Force: 0.5N Min.

**3. ENVIRONMENTAL**

- 3.1 Operating temperature range: -40°C~+85°C
- 3.2 Storage temperature range: -40°C~+85°C

**4. SOLDER ABILITY**

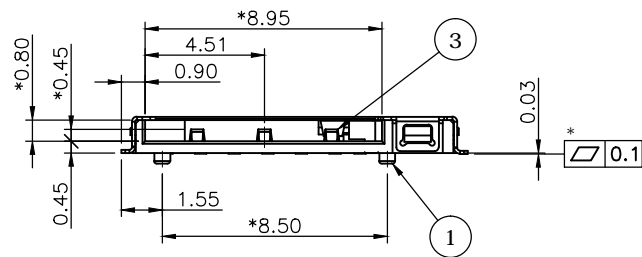
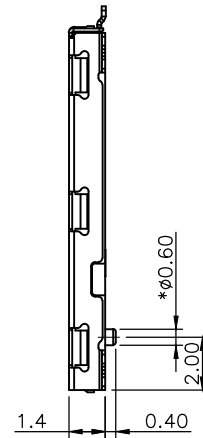
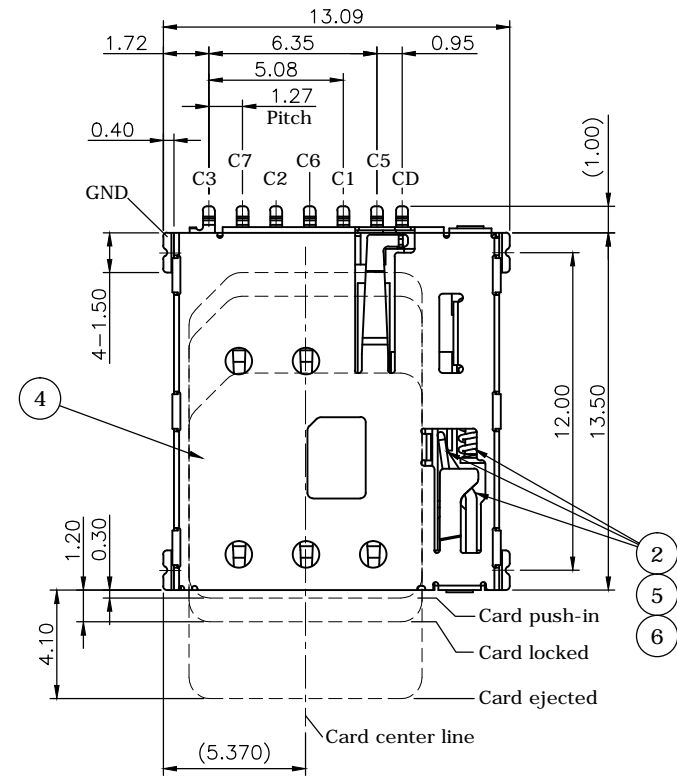
- 4.1 Recommended IR Reflow Temperature: 260°C

6	SPRING	SWP-B
5	LINK	Stainless Steel
4	SHELL	Stainless Steel, solder area: G/F, under plating nickel plating over all
3	CONTACT	Phosphor Bronze, G/F on contact & solder area, under plating nickel plating over all
2	SLIDER	LCP, UL94V-0, Black
1	HOUSING	LCP, UL94V-0, Black

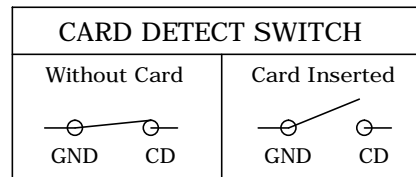
NO.		PART NAME		DESCRIPTION	
UNLESS OTHERWISE SPECIFIED TOLERANCE					
UNIT:	DECIMAL	LINEAR	ANGLES		
	X.	±0.50	±5°		
	X.X	±0.25	±3°		
	X.XX	±0.12	±1°		
DRAWN	Fros	2020/01/30	DRAWN NAME:		
CHECKED	Tim	2020/01/30	Nano SIM Socket, 6 Pin Push Push, 1.4H, 1u"		
APPROVED	Ken	2020/01/30	PRODUCT NO.	115U-A100	
SCALE	3.5/1	SHEET	1/2	SIZE	A4
FILE NAME		115U-A100_B_1			



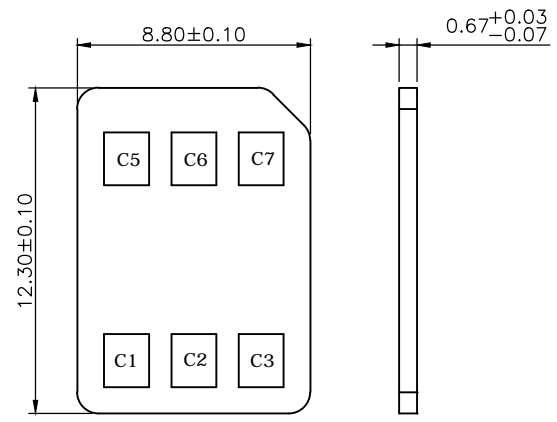
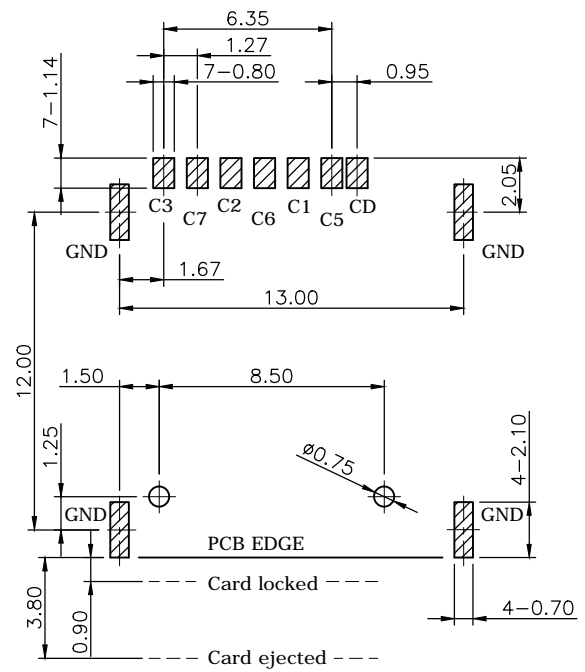
www.attend.com.tw





PIN DEFINITION						
NAME	C1	C2	C3	C5	C6	C7
TYPE	Vcc	RST	CLK	GND	Vpp	I/O



REV.	DESCRIPTION	DRAWN	DATE
	SEE SHEET ONE		



UNLESS OTHERWISE SPECIFIED TOLERANCE							
UNIT:	DECIMAL	LINEAR	ANGLES		 www.attend.com.tw		
	X.	±0.50	±5°				
	X.X	±0.25	±3°				
	X.XX	±0.12	±1°				
DRAWN	Fros	2020/01/30	DRAWN NAME:				
CHECKED	Tim	2020/01/30	Nano SIM Socket, 6 Pin Push Push, 1.4H, 1u"				
APPROVED	Ken	2020/01/30	PRODUCT NO.	115U-A100			
	SCALE	SHEET	SIZE	FILE NAME	115U-A100_B_1		
	3.5/1	2/2	A4				