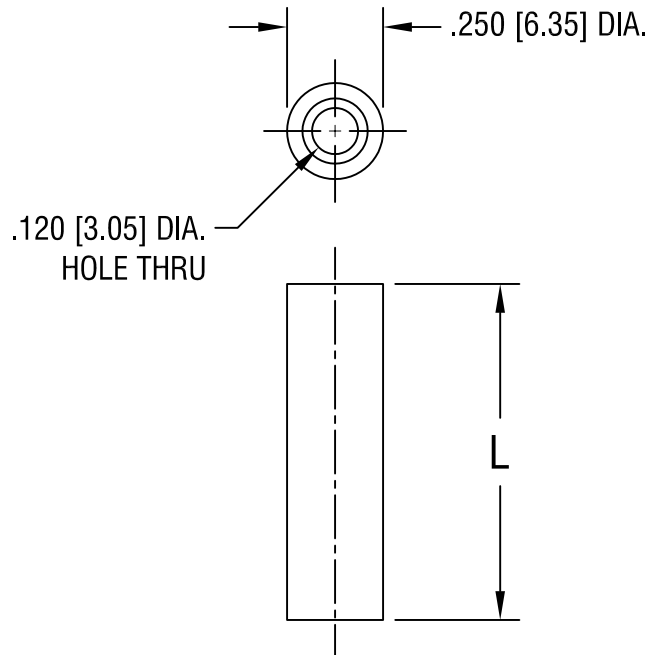


THIS DOCUMENT IS THE PROPERTY OF  
KEYSTONE ELECTRONICS CORP. AND  
SHALL NOT BE REPRODUCED, DISTRIBUTED  
OR USED AS A BASIS FOR MANUFACTURE  
WITHOUT PRIOR WRITTEN PERMISSION  
FROM KEYSTONE ELECTRONICS CORP.



| PART NO. | 'L' DIM.      |
|----------|---------------|
| 1924     | 1.500 [38.10] |
| 1925     | 2.000 [50.80] |

|                                   |                           |        |                  |
|-----------------------------------|---------------------------|--------|------------------|
| <b>KEYSTONE ELECTRONICS CORP.</b> |                           |        |                  |
| ASTORIA, N.Y. 11105-2017          |                           |        |                  |
| PART NAME                         |                           |        |                  |
| CLEAR THRU-HOLE SPACER            |                           |        |                  |
| MATERIAL                          |                           |        |                  |
| BRASS                             |                           |        |                  |
| FINISH                            |                           | DRN BY | DATE             |
| NICKEL PLATE                      |                           | BOONE  | 11.25.96         |
|                                   |                           | APPD   | SCALE            |
|                                   |                           |        | 2X               |
| TOLERANCES                        | INCH [MM]                 | CODE   | DWG NO.          |
| DECIMAL                           | $\pm .005$ [ $\pm 0.15$ ] | C/M    | <b>1924-1925</b> |
| ANGULAR                           | $\pm 1^\circ$             |        |                  |
| UNLESS OTHERWISE SPECIFIED        |                           |        |                  |

| DATE | DESCRIPTION | REV. |
|------|-------------|------|
|      |             |      |