

Terminal blocks

to Type 229

- ASP046 page 47
- Type 213 page 100
- Type 214 page 100
- Type 249 page 98
- Type 250 page 98

Accessories

for Type 229

- Coding set**
700024 page 168
(coding without pole loss)

Description Type 229

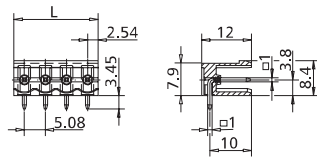
Header, centerline 5.08 mm / 0.200 inches, horizontal mounting, square contact pins 1 mm / 0.039 inches, open ends, codable

Technical Data Type 229

- V / A 300 / 15
- V / A 300 / 15
- 250 V / 4 kV / 3 / 10 A
Insulation co-ordination according to IEC 664-1
Clearance and creepage distance ≥ 4.1 mm

- Square contact pin 1 mm / 0.039 in.
- Square solder pin 1 mm / 0.039 in.
recommended pc board hole dia. 1.5 mm / 0.059 in.
- Solder pin length 3.45 mm / 0.136 in.
- Pole size 2 to 24
- Color (standard) black
- Color (optional) green

Dimensions in mm 1 mm = 0.0394 in.



$L = (\text{pole size} - 1) \times \text{centerline} + 5.08 \text{ mm} / 0.200 \text{ in.}$

Color Options

for Type 229

- Suffix Color**
- 2 black (standard)
- 6 green

Please order header and terminal block in the same color.

Part numbers (P/N)

Complete the part number by adding the pole size.

Type 229
centerline 5.08 mm / 0.200 inches

P/N 312291

	02	03	04	05	06	07	08
09	10	11	12	13	14	15	16
17	18	19	20	21	22	23	24

Type 229
centerline 10.16 mm / 0.400 inches

P/N 312292

	02	03	04	05	06	07	08
09	10	11	12				

- Standard pole sizes
- Available on demand.
Minimum order quantity 5000 poles per item.