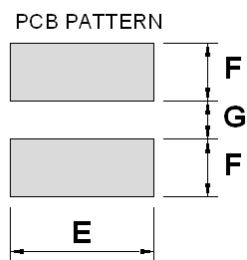
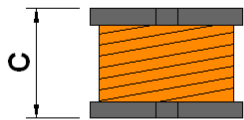
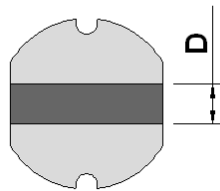
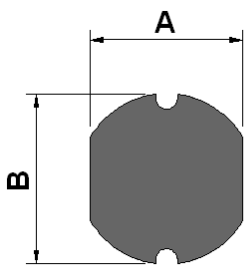


## Inductor

<b>Order code</b>	TCK-110
Inductance	3.3 $\mu$ H $\pm$ 20% (1 kHz / 1 V)
Rated current	2 A max.
DCR	70 m $\Omega$
Operating temperature	-40 to +105°C



### Dimensions [mm]

A	4.0 $\pm$ 0.3
B	4.5 $\pm$ 0.3
C	3.2 $\pm$ 0.3
D	1.2
E	4.5
F	1.75
G	1.5