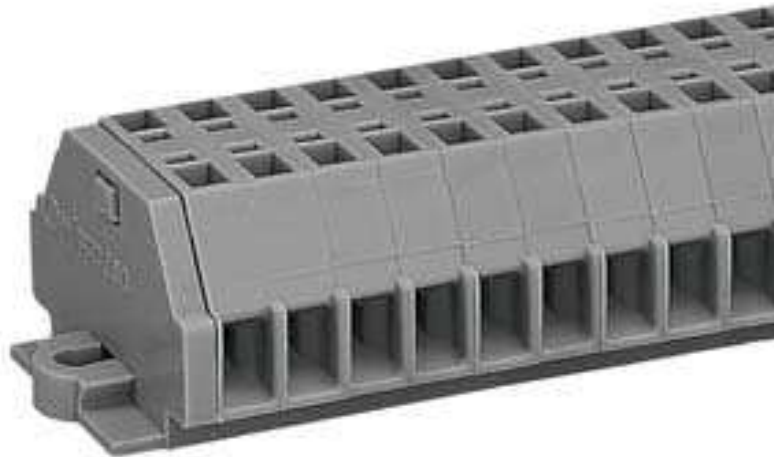


Data sheet

260-112

**2-CONDUCTOR TERMINAL STRIP LATERAL MARKING
WITH MOUNTING FEET 209-123 FOR TS 35 SIDE-ENTRY CAGE CLAMP
CONNECTION**



Technical data

Package size 25 pieces.

pole count	12
Cross section from [mm ²]	0.08 mm ²
Cross section to [mm ²]	1.5 mm ²
Cross section from [AWG]	28 AWG
Cross section to [AWG]	16 AWG
Number of strands	5
Voltage UL	300 V
Voltage CSA	300 V
Current UL	10 A
Current CSA	15 A
Measured voltage EN	400 V
Measured shock voltage	6 kV
Pollution degree	3
Current intensity EN	18 A
Weight	20.08 g
Color	grey
Wiring type	Side-entry
No. of connection Points	24
No. of potentials	12
Height	17 mm
Height	0.669 in
Width	74.5 mm
Width	2.933 in

Data sheet

260-112

**2-CONDUCTOR TERMINAL STRIP LATERAL MARKING
WITH MOUNTING FEET 209-123 FOR TS 35 SIDE-ENTRY CAGE CLAMP
CONNECTION**

Depth	25 mm
Depth	0.985 in
Strip length from	8 mm
Strip length to	9 mm
Strip length	0.33 in

Data sheet

260-112

2-CONDUCTOR TERMINAL STRIP LATERAL MARKING WITH MOUNTING FEET 209-123 FOR TS 35 SIDE-ENTRY CAGE CLAMP CONNECTION

Approval	Voltage	Current	Approval number	Notes
BBJ	400	17,5	B/12/696/03	
BV	400	17,5	07436/C0	
CCA	400	17,5	DK96-00357	
CSA	300	15	18677-45	
DEMKO	400	17,5	120039	
Dep.MaE	300	20	CS4590N	
DNV	400	17,5	E6998	
GL	400	17,5	17295-00HH	
KEMA	500		92.6446.01	
KR	400	17,5	HMB05880-EL002	
LR	500	19,5	91/20242(E3)	
NEMKO	500		M59289/01	
PRS	400	17,5	TE/1219/880590/98	
RMR	400	17,5	99.00007.250	
RosTesT	400	17,5	B09523	
SABS			751/82640	
SEMKO	500		9408057	
UL	300	10	E45172	
VDE	500		207ÜG,BI.1	

Data sheet

260-112

**2-CONDUCTOR TERMINAL STRIP LATERAL MARKING
WITH MOUNTING FEET 209-123 FOR TS 35 SIDE-ENTRY CAGE CLAMP
CONNECTION**

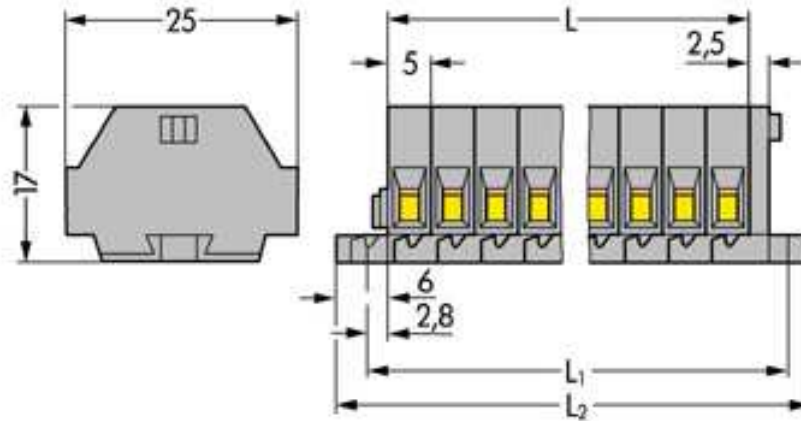
Accessories**Item number**

ALUMINIUM CARRIER RAIL 1000 MM / 3' 3 IN LONG	210-154
COMB TYPE JUMPER BAR INSULATED	260-402
END STOP FOR WSB QUICK MARKERS	209-122
Individual wire jumpers	individual jumper
MODULAR TEST PLUG ADAPTER MODULAR	249-135
MOUNTING CARRIER CAN BE USED AS END PLATE	209-137
MOUNTING FOOT WITH SCREW FOR TERMINAL BLOCKS WITH ALIGNABLE FIXINGS	209-123
Open individual wire jumpers ends	individual jumper open end
OPERATING STICKER FOR SIDE-ENTRY PCB TERMINAL BLOCKS	210-188/001-000
OPERATING TOOL TO CONNECT JUMPERS	209-132
SCREWDRIVER 3.5 X 0.5 MM / 0.137 X 0.019IN	210-257
SCREWDRIVER Type 2, bar (3,5 x 0,5) mm	210-120
SCREWDRIVER WITH PARTIALLY INSULATED SHAFT Type 2, bar (3,5 x 0,5) mm	210-620
TEST ADAPTER-MODULE WITH FIXING FLANGES	260-404
TEST PLUG 2 MM / 0.079 IN WIDE	210-136
TEST PLUG 2.3 MM / 0.091 IN WIDE	210-137

Data sheet

260-112

**2-CONDUCTOR TERMINAL STRIP LATERAL MARKING
WITH MOUNTING FEET 209-123 FOR TS 35 SIDE-ENTRY CAGE CLAMP
CONNECTION**



Data sheet

260-112

**2-CONDUCTOR TERMINAL STRIP LATERAL MARKING
WITH MOUNTING FEET 209-123 FOR TS 35 SIDE-ENTRY CAGE CLAMP
CONNECTION**

L = No.of poles x pole width

$L_1 = L + 8,1 \text{ mm}$

$L_2 = L + 14,5 \text{ mm}$