

BL0106-15-48

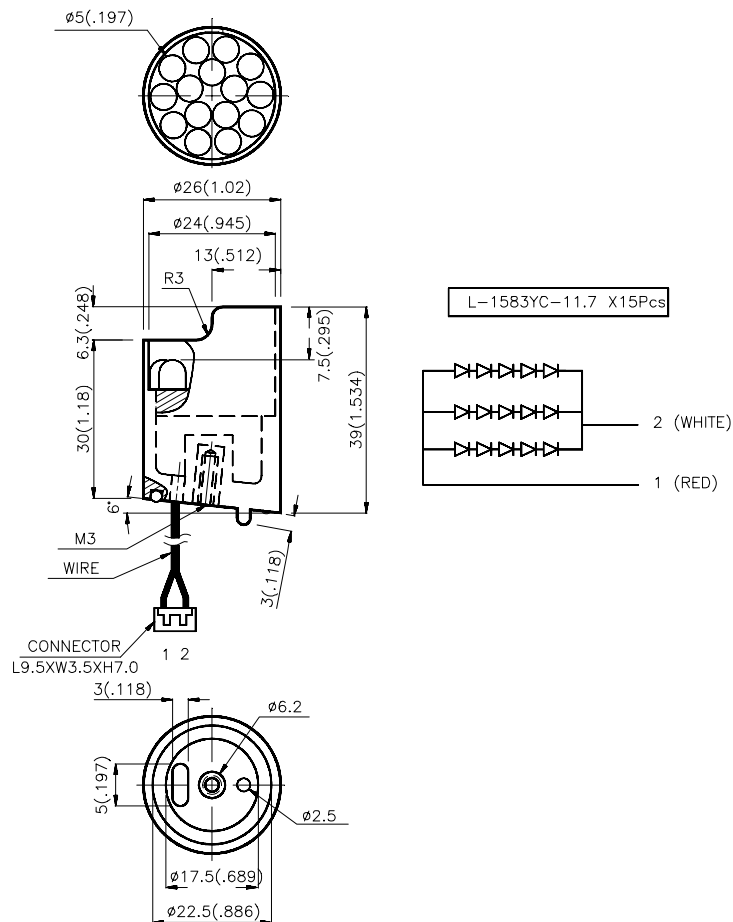
Features

- NO. OF BUILT-IN 5mm LED LAMPS: L-1583YC-11.7
- WATERPROOF PACKAGE WITH HOOD SUITABLE FOR OUTDOOR AND INDOOR INFORMATION BOARDS

Description

The Yellow source color devices are made with Gallium Arsenide Phosphide on Gallium Phosphide Yellow Light Emitting Diode.

Package Dimensions



Notes:

1. All dimensions are in millimeters (inches).
2. Tolerance is $\pm 0.25(0.01)$ unless otherwise noted.
3. Lead spacing is measured where the lead emerge package.
4. Specifications are subject to change without notice.

Electrical / Optical Characteristics at T_A=25°C

Symbol	Parameter	Device	Typ.	Max.	Units	Test Conditions
I _v	Luminous Intensity	BL0106-15-48	330		mcd	IF=60mA
θ	Viewing Angle		35		Deg	-
V _F	Forward Voltage		10.4	12.0	V	IF=60mA
λ _{peak}	Peak Wavelength		590		nm	IF=60mA
λ _D	Dominant Wavelength		587		nm	IF=60mA
Δλ _{1/2}	Spectral Line Halfwidth		35		nm	IF=60mA
I _R	Reverse Current			10	μA	VR =5V

Absolute Maximum Ratings at T_A=25°C

Parameter	BL0106-15-48	Units
Power dissipation	720	mW
DC Forward Current	75	mA
Reverse Voltage	5	V
Operating Temperature	-40 to +70	°C
Storage Temperature	-40 to +85	°C