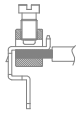




**SINGLE DECK
TERMINAL BLOCKS**

Rising clamp



TECHNICAL DATA	① PITCH	mm
	② POLES	
	CURRENT	
	VOLTAGE	
	TEST VOLTAGE	
	RECOMMENDED TORQUE	
	WIRE STRIPPING	
	MAX WIRES SECTION	
	OPERATING TEMP.	

5 (10)	
2/3/4 (1/2)	Side-by-side stackable Liscio affiancabile
16A	
250V (750V)	
2 kVrms/60s (3 kVrms/60s)	
0.5÷0.55Nm / 4.5÷4.9Lb-in	
max 7mm	
2.5mm² 14AWG Stranded Flessibile	4.0mm² 12AWG Solid Rigido
2x1.5mm² 2x16AWG Solid Rigido	
-40°C ÷ +130°C	

5	
4	Side-by-side stackable Liscio affiancabile
16A	
250V (750V)	
2 kVrms/60s (3 kVrms/60s)	
0.5÷0.55Nm / 4.5÷4.9Lb-in	
max 7mm	
2.5mm² 14AWG Stranded Flessibile	4.0mm² 12AWG Solid Rigido
2x1.5mm² 2x16AWG Solid Rigido	
-40°C ÷ +130°C	

5 (10)	
2÷3 (1÷2)	Side-by-side stackable Liscio affiancabile
16A	
250V (750V)	
2 kVrms/60s (3 kVrms/60s)	
0.5÷0.55Nm / 4.5÷4.9Lb-in	
max 7mm	
2.5mm² 14AWG Stranded Flessibile	4.0mm² 12AWG Solid Rigido
2x1.5mm² 2x16AWG Solid Rigido	
-40°C ÷ +130°C	

APPROVAL DATA	APPROVALS	EN60998	EN60998	UL1059 C22-2 N°158
	CURRENT	16A	-	15A factory 15A field
	VOLTAGE	250V (750V)	-	300V
	WIRE SECTION	2.5mm ²	-	14÷30AWG
	TORQUE	0.5Nm	-	4.5Lb-in
	FILE	CA02.01614	-	E178356

EN60998	EN60998	UL1059 C22-2 N°158
16A	-	15A factory 15A field
250V (750V)	-	300V
2.5mm ²	-	14÷30AWG
0.5Nm	-	4.5Lb-in
CA02.01614	-	E178356

EN60998	EN60998	UL1059 C22-2 N°158
16A	-	15A factory 15A field
250V (750V)	-	300V
2.5mm ²	-	14÷30AWG
0.5Nm	-	4.5Lb-in
CA02.01614	-	E178356

EN60998	EN60998	UL1059 C22-2 N°158
16A	-	15A factory 15A field
250V (750V)	-	300V
2.5mm ²	-	14÷30AWG
0.5Nm	-	4.5Lb-in
CA02.01614	-	E178356

MATERIALS	HOUSING	PA - UL 94 V0	
	SCREW	M3 Captive Imperdibile	Galvanized steel Acciaio zincato
	CLAMP	Nickel copper alloy / Lega di rame nichelata	
	TERMINAL	Tin-plated copper alloy / Lega di rame stagnata	

PA - UL 94 V0	
M3 Captive Imperdibile	Galvanized steel Acciaio zincato
Nickel copper alloy / Lega di rame nichelata	
Tin-plated copper alloy / Lega di rame stagnata	

PA - UL 94 V0	
M3 Captive Imperdibile	Galvanized steel Acciaio zincato
Nickel copper alloy / Lega di rame nichelata	
Tin-plated copper alloy / Lega di rame stagnata	

PA - UL 94 V0	
M3 Captive Imperdibile	Galvanized steel Acciaio zincato
Nickel copper alloy / Lega di rame nichelata	
Tin-plated copper alloy / Lega di rame stagnata	

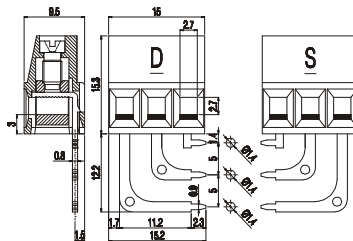
HOW TO ORDER
* Custom code (assigned by euroclamp)
COLOURS
To be specified just in case it is different from the standard

Series Serie	Poles Poli	Pitch Passo	Version Versione	(*)	Colour Colore
ML25	2/3/4	5	D-LC	*	#
ML25	1/2	10	S-LC	*	#
Standard	On request / Su richiesta				

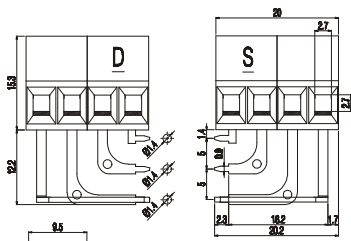
Series Serie	Poles Poli	Pitch Passo	Version Versione	(*)	Colour Colore
ML25	4	5	D-LCS	*	#
Standard	On request / Su richiesta				

Series Serie	Poles Poli	Pitch Passo	Version Versione	(*)	Colour Colore
ML25	3	5	D-LI	*	#
ML25	2	10	S-LI	*	#
Standard	On request / Su richiesta				

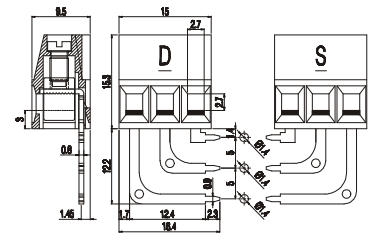
NOTE
① Products of pitches 10 / 15 / 15,24 are configurations with metal parts removed from alternating poles to increase spacings;
② Configurations of higher number of poles are obtainable composing modular versions. In order to avoid interference mounting, the terminal row should be interrupted when the number of positions exceeds 30.
③ Please check the UL Online Directory for more details about applicable limited ratings.



APPLICATION: Electronic housing CEM17 / CEM22-V
APPLICAZIONE: Contenitore per elettronica CEM17 / CEM22-V



APPLICATION: Electronic housing CEM22-V
APPLICAZIONE: Contenitore per elettronica CEM22-V



APPLICATION: Electronic housing CEM35-V
APPLICAZIONE: Contenitore per elettronica CEM35-V