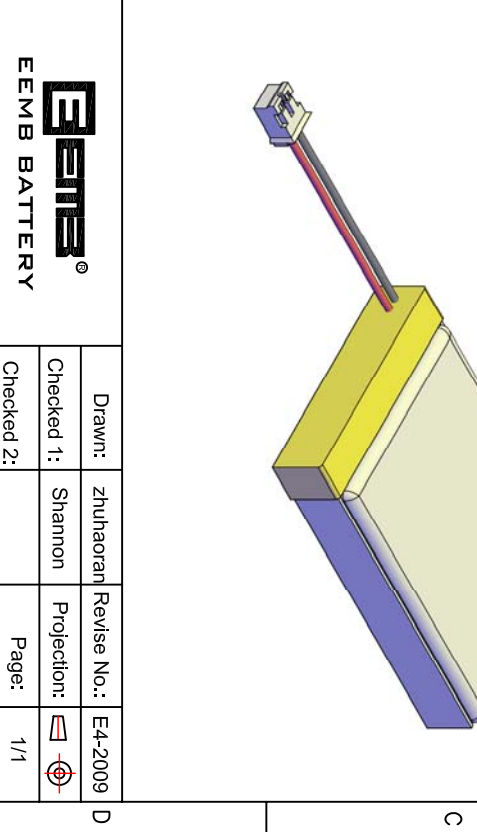


Model:	LP103450	Overcharge Detection Voltage(V)	4.28±0.05
	Min. Capacity 最低容量 (mAh) (0.2C, 25±3°C) *Single cell capacity (单体电芯容量)	Overdischarge Detection Voltage(V) 过放电保护电压 (V)	2.3±0.1
Battery pack specification (电池组规格)	Typical Capacity 典型容量 (mAh) (0.2C, 25±3°C) *Single cell capacity (单体电芯容量)	Limited to Max loading current 仅用于最大的负载电流 peak value (A) 峰值 2 (A)	constant (A) 持续 1 (A)
	Nominal Voltage 标称电压 (V) Internal impedance 内阻(≅) (mΩ, AC 1KHZ)	Customer required Max loading current 客户要求最大的负载电流 peak value (A) 峰值 (A)	constant (A) 持续 (A)
Ambient Conditions (环境温度)	Charge Temp. 充电温度 (°C)	Battery protection Related Value: (相关的电池保护值)	
	Discharge Temp. 放电温度 (°C)	If actual application loading current is bigger than EEMB suggested, please indicate. The application profile is important for an appropriate PCM design. (如果实际应用的负载电流大于EEMB推荐值, 请提出来, 实际的应用情况对PCM的设计至关重要)	
Humidity(湿度)	Humidity(湿度)	PCM 峰值 (A)	



Remark(备注):
1. No scratch, distortion, discoloration and leakage on the appearance of the cell(电池表面无划痕、变形、污点及漏液等现象).
2. RoHS compliant(严格按照ROHS要求生产).

Title	LP103450-PCM-LD/	Drawn:	zhuhaoran	Revise No.:	E4-2009
File NO.	A09149	Checked 1:	Shannon	Projection:	
		Checked 2:		Page:	1/1
		Approved:		Scale:	1 : 1
		Draw Date:	2014/02/06	Unit:	mm