

Storage Choke, fully potted resin



Description

- Storage choke
- THT-terminals
- Reduced magnetic reversal
- Constant inductance at high alternating field modulation and large DC magnetization
- Constant inductance at high alternating field modulation and large DC magnetization
- Fully potted resin

Standards

- EN 60938

Applications

- Storage of energy in switched power supplies
- Switch-mode
- Chopper amplifiers
- DC drives and stepper motor controls

Weblinks

[pdf datasheet](#), [html-datasheet](#), [General Product Information](#), [Approvals](#), [CE declaration of conformity](#), [RoHS](#), [CHINA-RoHS](#), [REACH](#), [Distributor-Stock-Check](#), [Detailed request for product](#), [SPICE Library](#)

Technical Data

Rated voltage	up to 600VDC
Rated Current	0.5 - 16A @ Ta 70 °C
Rated inductance	0.01 - 1 mH, Tol. ±15%
Power Operating Frequency	up to 1 MHz
Terminal Type	THT
Weight	7 - 243 g
Material: Housing	UL 94V-0
Sealing Compound	UL 94V-0

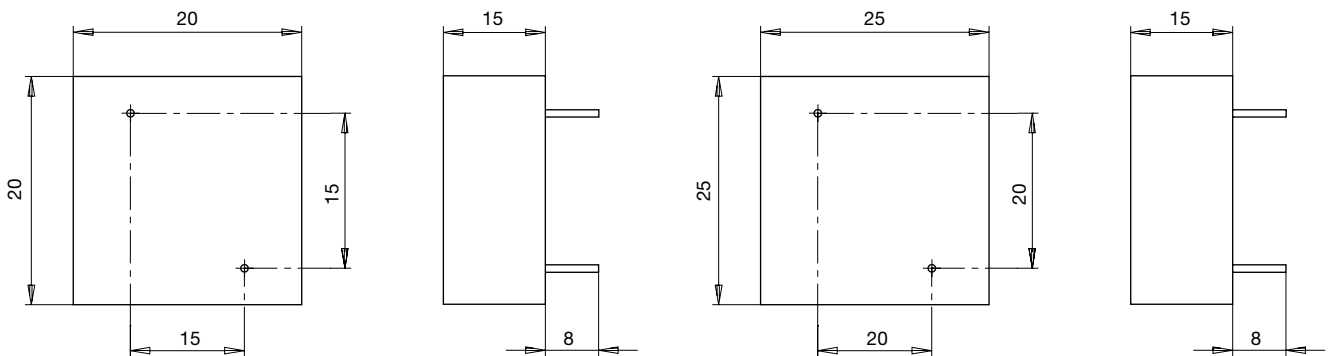
Isolation Voltage	2 kV eff., winding to ambient
Climatic Category	40/125/21 acc. to IEC 60068-1
Allowable Operation Temp.	-40°C to 125°C

Detailed information on product approvals, code requirements, usage instructions and detailed test conditions can be looked up in [General Product Information](#)

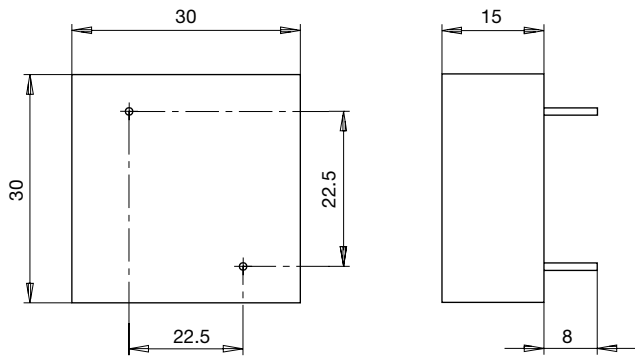
Dimension

Case 20

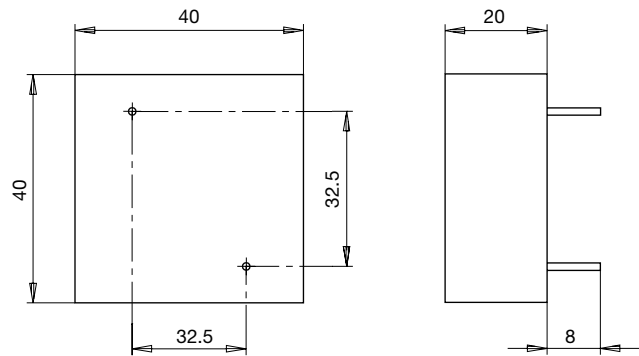
Case 25



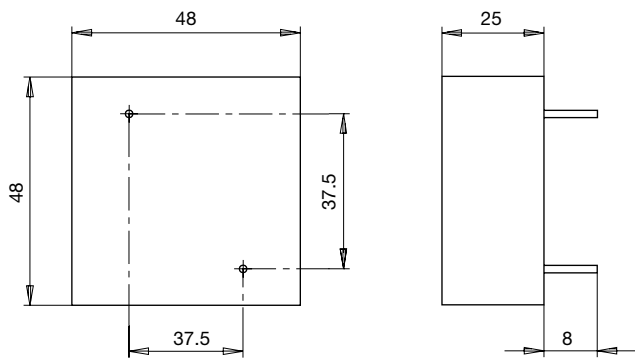
Case 30



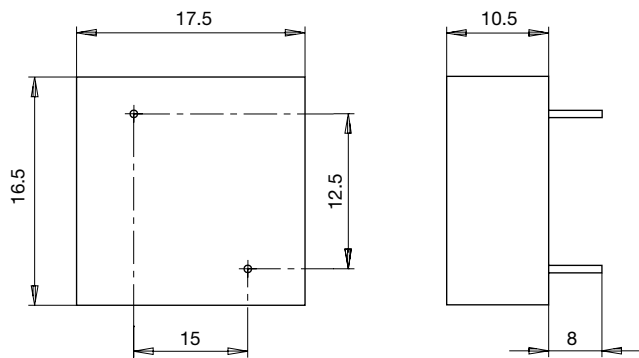
Case 40



Case 48

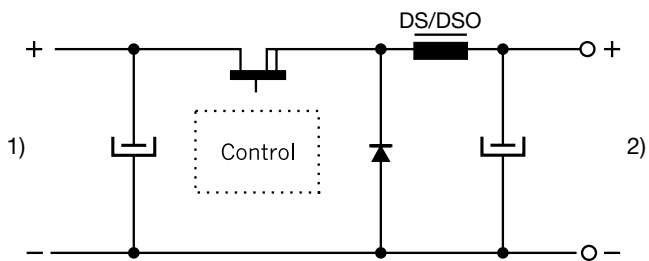


Case 175



Diagrams

Switch-mode



- 1) Input
- 2) DC output regulated

All Variants

I_n [A]	L_n [mH]	R_{cu} [mΩ]	f_{RES} [MHz]	Conne- tion pins ø	Weight [g]	Housings	Packing unit [pcs.]	Order Number
0.5	0.8	700	2	0.5	7g	175	100	DS1-175-0001
0.63	0.5	500	2.5	0.5	7g	175	100	DS1-175-0002
1	0.2	180	5	0.5	7g	175	100	DS1-175-0003
1.4	0.1	80	6.5	0.5	7g	175	100	DS1-175-0004
3	0.035	26	11	0.5	7g	175	100	DS1-175-0005
0.63	1	700	1.2	0.5	14g	20	75	DS1-20-0001
1.4	0.2	175	4	0.5	14g	20	75	DS1-20-0002
3.15	0.04	26	10	0.7	14g	20	75	DS1-20-0003
6.3	0.01	8	-	0.7	14g	20	75	DS1-20-0004
1.4	0.5	200	1	1	23g	25	50	DS1-25-0001
2	0.2	100	3.5	1	23g	25	50	DS1-25-0002
3.15	0.1	40	5.7	1	23g	25	50	DS1-25-0003
7	0.02	10	-	1	23g	25	50	DS1-25-0004
1.6	0.5	200	-	1	34g	30	30	DS1-30-0001
2	0.3	140	-	1	34g	30	30	DS1-30-0002
3.15	0.15	55	4.5	1	34g	30	30	DS1-30-0003
4	0.1	36	6	1	34g	30	30	DS1-30-0004
2	1	190	-	1.5	84g	40	35	DS1-40-0001
3.15	0.5	90	-	1.5	85g	40	35	DS1-40-0002
4	0.2	55	3	1.5	84g	40	35	DS1-40-0003
6	0.1	26	4.5	1.5	84g	40	35	DS1-40-0004
3.15	1	160	1	1.5	243g	48	20	DS1-48-0001
4	0.5	80	1.5	1.5	243g	48	20	DS1-48-0002
5	0.3	75	-	1.5	243g	48	20	DS1-48-0003
9	0.1	20	-	1.5	243g	48	20	DS1-48-0004
15	0.035	7	-	1.5	243g	48	20	DS1-48-0005
16	0.16	12	-	1.5	243g	48	10	DS1-48-0006

■ Most Popular.

Availability for all products can be searched real-time:<http://www.schurter.com/en/Stock-Check/Stock-Check-SCHURTER>