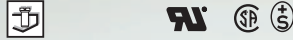
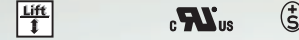
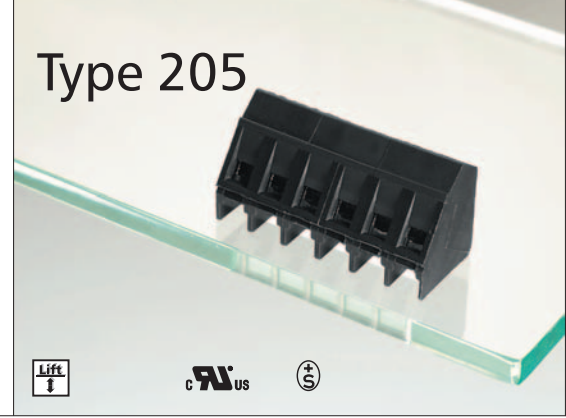




Type 05



Type 205



Note for wire range

Additional wire sizes and/or combinations of same size wires as follows:

Type 05

#(2) Wire range extended to No. 26 AWG for factory-wiring.

Two same size wires 22 - 16 AWG Cu, Sol/Str for field; No. 26 - 16 AWG Cu, Sol/Str for factory.

+ Two same size wires No. 22 - 16 AWG Cu, Sol/Str for field-wiring; No. 30 - 16 AWG Cu, Sol/Str factory-wiring.

Description Type 05

Screw type terminal block, solderable, centerline 5 mm / 0.197 inches, wire entry 45°, wire protector

Technical Data Type 05

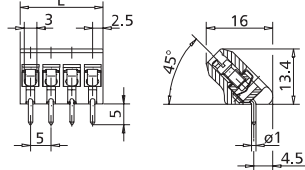
UL V / A / AWG 300 / 20 / 22 - 12 #(2), + (see note)

VDE V / A / AWG 300 / 15 / 22 - 12 #(2), + (see note)
Screw torque max. 6 lbs.-in

CE 0.08 - 2.5 mm² 250 V / 2.5 kV / 3 / 16 A
Insulation co-ordination according to IEC 664-1
Clearance and creepage distance ≥ 2.6 mm
Screw torque max. 0.5 Nm

Wire diameter single wire 0.4 - 2.2 mm
Wire strip length 8 mm / 0.315 in.
Solder pin 1 mm / 0.039 in. dia. recommended pc board hole dia. 1.3 mm / 0.051 in.
Solder pin length 5 mm / 0.197 in.
Pole size 2 to 12
Color black

Dimensions in mm 1 mm = 0.0394 in.



$L = (\text{pole size} - 1) \times \text{centerline} + 5 \text{ mm} / 0.197 \text{ in.}$

Description Type 205

Screw type terminal block, solderable, centerline 5 mm / 0.197 inches, wire entry 35°, lift system

Technical Data Type 205

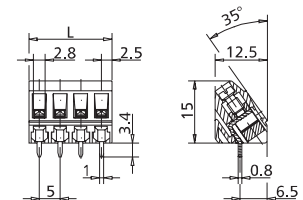
UL V / A / AWG 300 / 15 / 28 - 12

Screw torque max. 6 lbs.-in

CE 0.08 - 2.5 mm² 250 V / 4 kV / 3 / 15 A
Insulation co-ordination according to IEC 664-1
Clearance and creepage distance ≥ 3.2 mm
Screw torque max. 0.5 Nm

Wire diameter single wire 0.3 - 2.3 mm
Wire strip length 8 mm / 0.315 in.
Solder pin 0.8 x 1 mm 0.031 x 0.039 in. recommended pc board hole dia. 1.4 mm / 0.055 in.
Solder pin length 3.4 mm / 0.134 in.
Pole size 2 to 24
Color black

Dimensions in mm 1 mm = 0.0394 in.



$L = (\text{pole size} - 1) \times \text{centerline} + 5 \text{ mm} / 0.197 \text{ in.}$

Part numbers (P/N)

Type 05

centerline 5 mm / 0.197 inches

P/N 310051

Complete the part number by adding the pole size.

	02	03	04	05	06	07	08
	09	10	11	12			

Part numbers (P/N)

Type 205

centerline 5 mm / 0.197 inches

P/N 312051

Complete the part number by adding the pole size.

	02	03	04	05	06	07	08
	09	10	11	12	13	14	15
	17	18	19	20	21	22	23
	24						

Type 205

centerline 10 mm / 0.394 inches

P/N 312052

	02	03	04	05	06	07	08
	09	10	11	12			

02 Standard pole sizes

07 Available on demand. Minimum order quantity 5000 poles per item.

02 Standard pole sizes

13 Available on demand. Minimum order quantity 5000 poles per item.