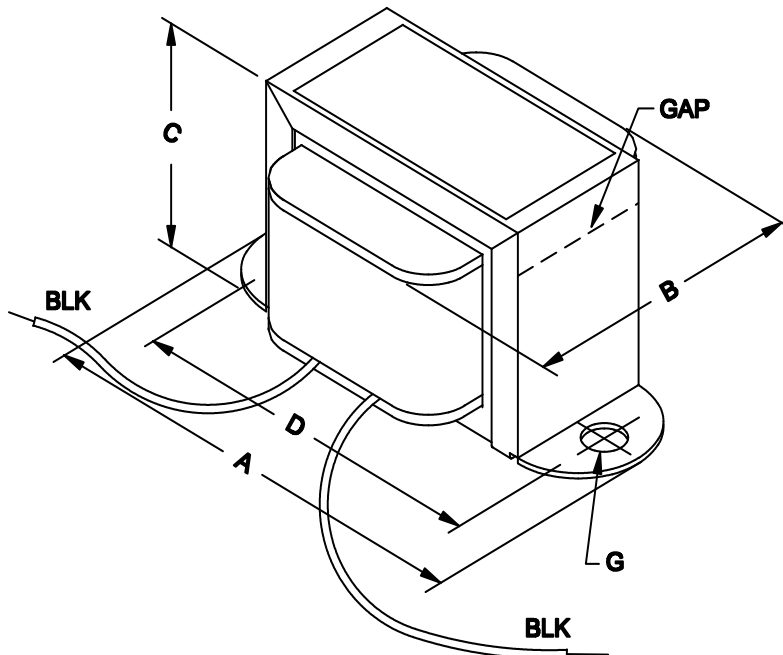




D.C. Reactors or Filter Chokes Low to Medium Current

Features

- Economical “open bracket” - channel mount.
- Tolerance of 15% on both inductance & resistance.
- Inductances measured at rated D.C. current.
- Minimum 5” long leads.
- Units will exhibit less inductance at slightly higher currents or more inductance at lower currents.
- Perfect for high voltage power supply filtering.
- Every unit is Hipot tested (100%) at 1,500 VAC
- Units are vacuum impregnated with polyurethane varnish for quiet and long life operation.



| Mechanical | |
|-------------------------------|--------------------|
| A | 4.03" / 102.4 mm |
| B | 2.25" / 57.2 mm |
| C | 2.63" / 66.8 mm |
| D | 3.56" / 90.4 mm |
| G | 0.19" / 4.8 mm |
| Weight | 2.25 lbs / 1.02 kg |
| Electrical | |
| Inductance (+/- 15%) | 7H |
| D.C. Current | 150 ma. |
| Resistance (+/- 15%) | 100 ohms |
| Maximum Operating Volt (D.C.) | 500V |