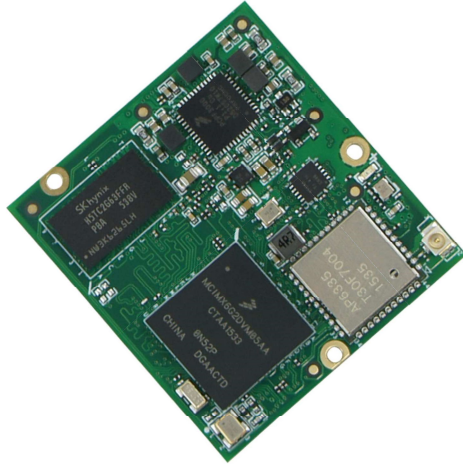


PICO-IMX6UL-EMMC



Main Features

- The PICO-IMX6UL-EMMC design based on the NXP i.MX6 multimedia processor is a purpose-built, small footprint hardware platform compatible with Intel Edison baseboards and adds a number of additional high-speed signals such as RMII LAN, USB and 24 bit TTL Display.
- ARM Cortex-A7 NXP i.MX6UL single core System-on-Module.
- WiFi 802.11ac and Bluetooth v. 4.0 communication interface.



	EDISON				EXP-A		EXP-B			
Power	SDIO	I ² S	SPI	PWM	LVDS	RMII	CAN	PCIe	HDMI	SATA
	USB OTG	UART	I ² C	GPIO	TTL		I ² C	USB HOST	MIPI	

Specifications

Core System

CPU	NXP i.MX6UL @ 528MHz
Technology	ARM Cortex-A7 single core
PMIC	NXP PF3000
System Memory	up to 1GB DDR3L
Storage	Onboard eMMC (default 4GB)

Connectivity

Network RMII	Signals routed to connector
WiFi	Broadcom BCM4339 802.11ac
Bluetooth	Broadcom BCM4339 BT 4.0

I/O Interface Signalling

Edison I/O	GPIO
	PWM
	I ² C
	I ² S
	SPI
	UART
	USB-OTG
Additional I/O	24-bit TTL RGB
	RMII LAN
	CAN
	USB Host
	I ² C

Video

PXP	Image re-sizing, rotation, overlay and CSC Pixel Processing Pipeline
-----	--

Audio

Interface	I ² S
Audio Codec	on Carrier Board

Power Specifications

Input Power	4.2-5.25V DC
-------------	--------------

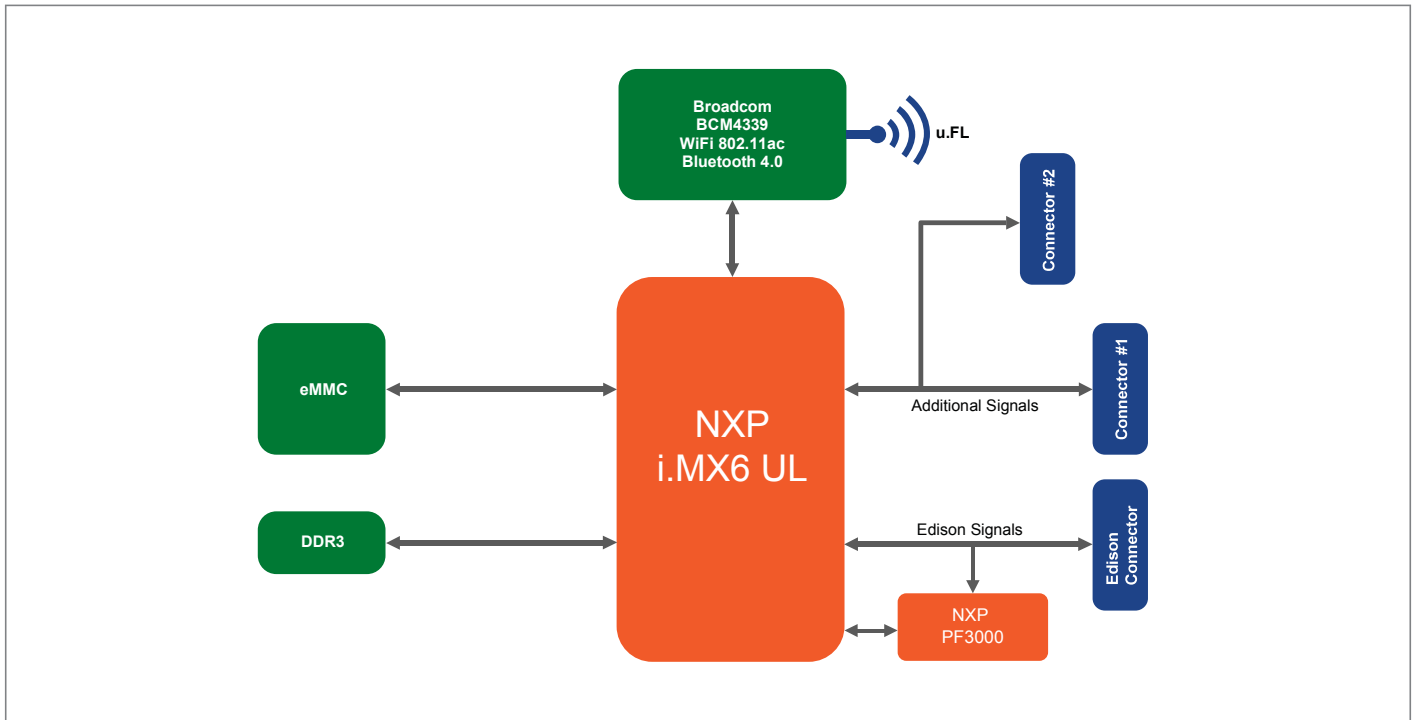
Connectors

Board-to-Board	Edison compatible connector (Hirose 70-pin) Hirose 70-pin connectors
----------------	---

Operation Systems

Standard Support	Linux, Yocto
------------------	--------------

Block Diagram

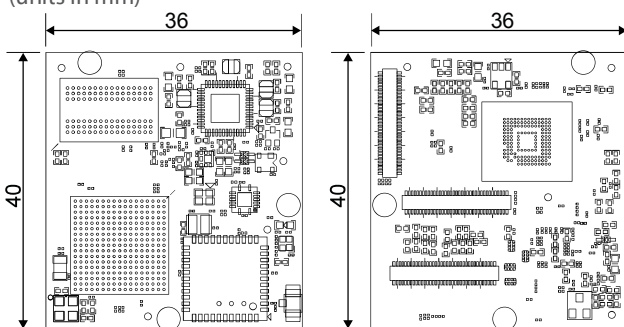


Environmental and Mechanical

Temperature	Commercial : 0° to 60° C Extended : -20° to 70° C Industrial : -35° to 85° C (no WiFi)
Humidity	10 to 90%
Dimensions	36 x 40 mm 1 3/8 x 1 5/8 inch
MTBF	>100,000 hours
Weight	8 grams
Certification	Compliant with CE, FCC, RoHS, REACH directives

Dimensions

(units in mm)



Ordering Information

PICO-IMX6G2-05-Rxxx-Exx-xx-xxx-xxxx

	Code	Description
Processor	G2	i.MX6 Ultralite
Processor speed	05	528 MHz
Memory	R256 R512	256 MB DDR3L 512 MB DDR3L
Storage	E04	eMMC capacity in Gigabyte E04 = 4GB : E08 = 8GB : E16 = 16GB E32 = 32GB : E64 = 64GB
Wireless Networking	- BW	No 802.11ac + Bluetooth 4.0
Temperature Range	- TE TI TEC TIC	Commercial Temperature range (0~60° C)(Default) Extended Temperature range (-20~70° C) Industrial Temperature range (-35~85° C) Certified Extended Temperature range (-20~70° C) Certified Industrial Temperature range (-35~85° C)
Custom ID	XXXX	Custom Part number ID for customized software loader and special component (BOM)

* Feel free to contact us for custom tailored Carrier Board request for your projects.