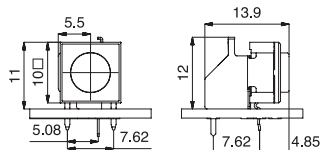


### Technical Data

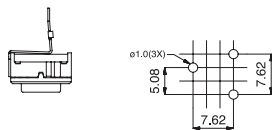
- through-hole only
- 50mA/24VDC
- single pole/momentary
- 10.000.000 operations life time
- IP67 sealing
- temperature range:  
low temp: -40/+115°C



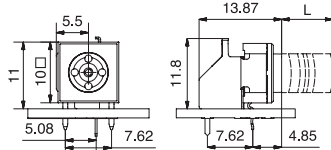
#### Dimensions 3CTRAS



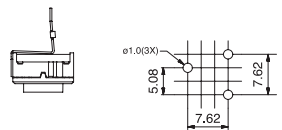
#### PCB layout



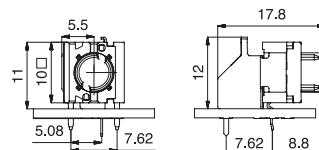
#### Dimensions 3ETRAS



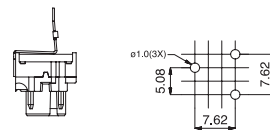
#### PCB layout



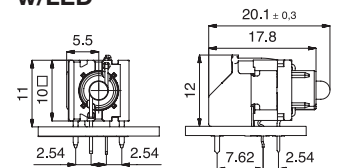
#### Dimensions 3FTRAS



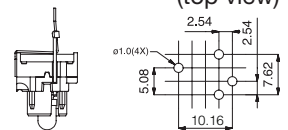
#### PCB layout



#### Dimensions 3FTRAS w/LED



#### PCB layout (top view)



### How to order

**3** **T** **L 6** **RAS**  
**Switch** **Mounting** **L 6 low temp.** **Right angle support**  
**3C** **T through-hole**  
**3F**

3FTL6RAS - for caps 1D-1K-1P-1S see page 31

**3 E** **T** **L** **9 20 23 24 28 29** **RAS**  
**Switch** **Mounting** **L low temp.** **Actuator made of PPS** **Actuator height**  
**T through-hole** **Two digit colour code means actuators made of polycarbonate**  
 Switch and 3E actuator can be delivered unassembled.

9 black	} Two digit colour code means actuators made of polycarbonate	1.6
20 blue		3.1
23 grey		4.0
24 yellow		4.6
28 red		5.6
29 black		8.6

**3 F** **T** **L 6** **00 20 40 60 80 2040 8020 8040** **RAS**  
**Switch** **Mounting** **L 6 low temp.** **LED** **Right angle support**  
**T through-hole**

00 blue  
 20 green  
 40 yellow  
 60 white  
 80 red  
 2040 green/yellow  
 8020 red/green  
 8040 red/yellow

3FTL6RAS w/LED can be used with the keycaps:  
 1D,1E,1F,1K,1N,1Q,1R,1S, 1T, 1U, 1V, 1WA, 1WD, 1WP, 1X

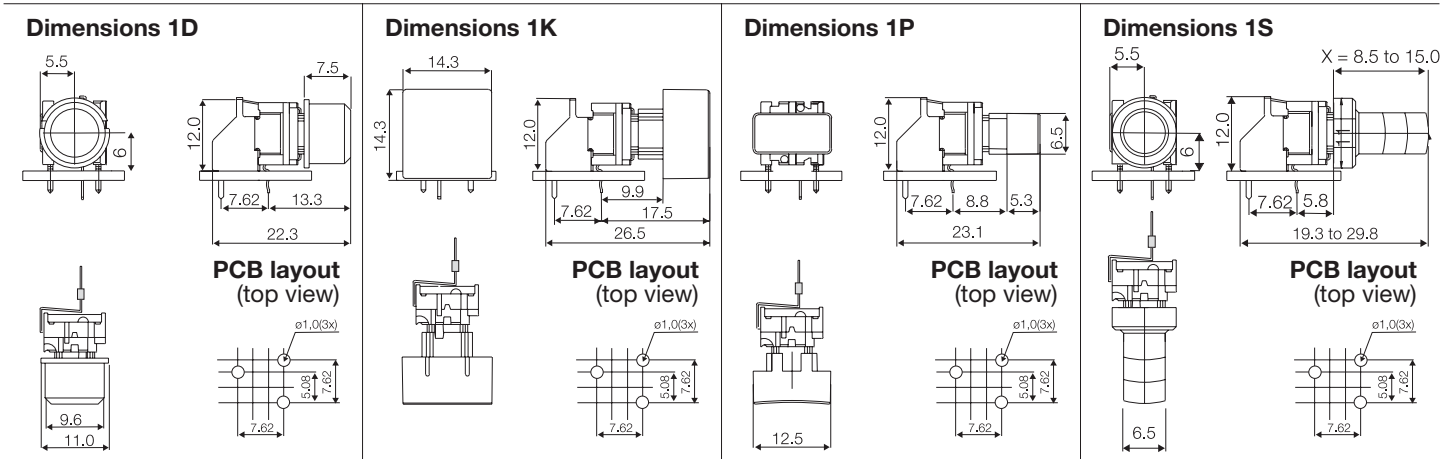
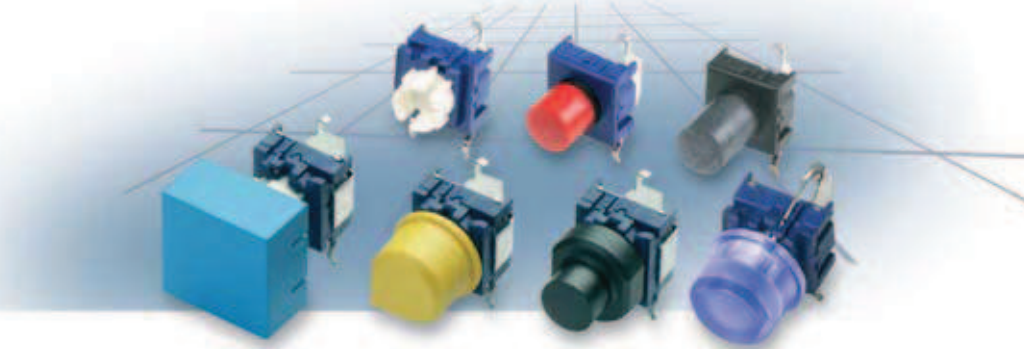
Ask for drawings/dimensions for these keycaps with 3FTL6RAS w/LED

Ordering example: 3FTL620RAS + 1Q096

For updates of products and/or changes of specifications please see [www.mec.dk](http://www.mec.dk)

### Technical Data

- through-hole only
- 50mA/24VDC
- single pole/momentary
- 10.000.000 operations life time
- IP67 sealing
- temperature range:  
low temp: -40/+115°C



### How to order

<b>3 F</b>	<b>T</b>	<b>L 6</b>	<b>R A S</b>	+	<b>1 D</b>			
<b>Switch</b>	<b>Mounting</b> T through-hole	<b>L 6</b> low temp.	Right angle support		<b>Cap</b>	00 blue	30 ultra blue	50 metal dark blue
						02 green	40 dusty blue	53 metal light grey
						03 grey	42 aqua blue	57 metal dark grey
						04 yellow	32 mint green	58 metal bordeaux
						06 white	33 tele grey	
						08 red	34 melon	
						09 black	38 noble red	
					<b>1 P</b>			
					<b>Cap</b>	00 blue		
						03 grey		
						08 red		
						09 black		
					<b>1 K</b>			
					<b>Cap</b>	00 blue		
						02 green		
						03 grey		
						04 yellow		
						06 white		
						08 red		
						09 black		
					<b>1 S 0 9</b>			
					<b>Cap black</b>	<b>H</b>	<b>X *</b>	
						16.0	8.5	
						19.0	11.5	
						22.5	15.0	

Other keycaps such as 1GA, 1GC, 1N, 1T, 1U, 1V, 1WA, 1WD, 1WP and 1X can be used on 3FTL6RAS. It may require reducing the size of the PCB to the front side of the switch body to avoid the cap touching the PCB. Ask for drawings/dimensions for these keycaps with 3FTL6RAS.

Please also see 3FTL6RAS with LED under 3C/3E/3FRAS.

\*Any cap height X from 8.5 to 15.0 mm is available.  
Please order 1S09-H, where H = X+7.5 mm

Min. order quantity for custom heights is 2.000 pcs.

**Ordering example:** 3FTL6RAS+1K0016 + 2K03

For updates of products and/or changes of specifications please see [www.mec.dk](http://www.mec.dk)