



## SPECIFICATIONS SHEET

**PRODUCT TYPE : EXTERNAL DRIVE PIEZO TRANSDUCER**

**PRODUCT SERIES : DB-E338**

**DESCRIPTION : PZ TRANSDUCER 9V PIN NOYRL RoHS**

**COLOR : BLACK**

### ELECTRICAL SPECIFICATIONS

MODEL NO.	33PZ24400LFPN
* SOUND PRESSURE LEVEL	85.0 dBA Min. ( 9.0 V p-p Square Wave , 10.0 cm , 4000 Hz )
CAPACITANCE	17000 pF ± 30 % at 120 Hz
* RATED CURRENT ( MAX. )	8.0 mA
* MAX. INPUT VOLTAGE	30.0 V p-p
OPERATING TEMPERATURE	- 20.0 ~ + 60.0 °C
STORAGE TEMPERATURE	- 30.0 ~ + 70.0 °C
TERMINAL	PIN
HOUSING MATERIAL	NORYL
WEIGHT	3.0 g

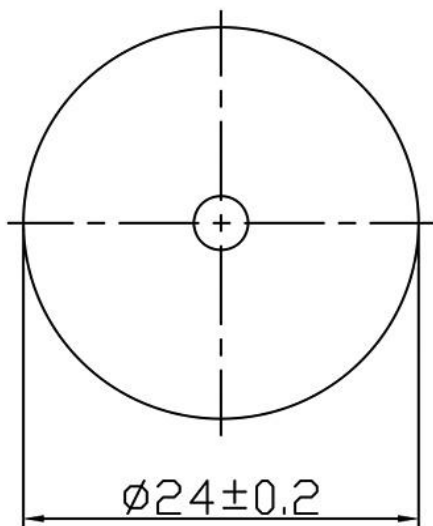
\* Value Applying at Rated Voltage.

### DIMENSIONS

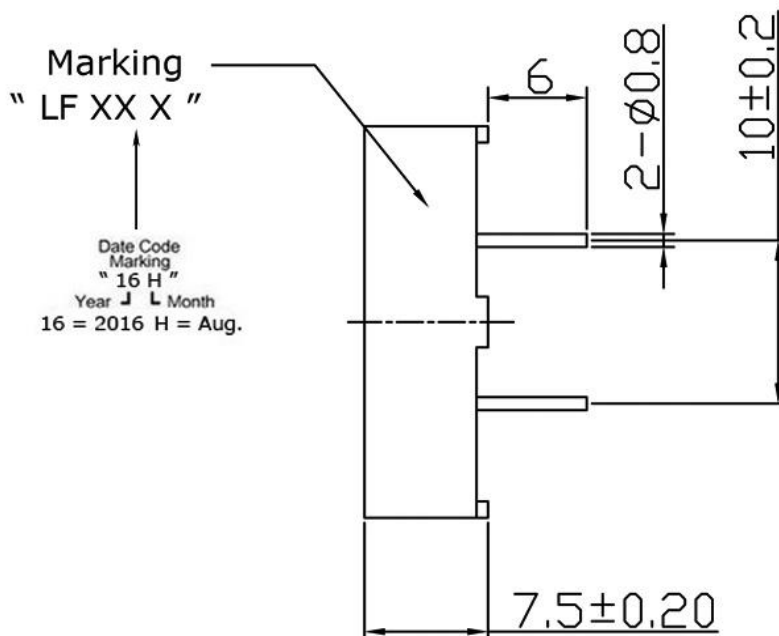
UNIT : mm

Tolerance : ± 0.5 mm

## TOP VIEW




## SIDE VIEW



Modify :	Date :	By :
1 ) Max. input volate 60Vp-p change to 30Vp-p. 2 ) Add Reted current ( Max ) 8 mA.	11-Aug.-2016	Chris

Approved By :   
Date : 11-Aug.-2016

Prepared By :   
Date : 11-Aug.-2016