

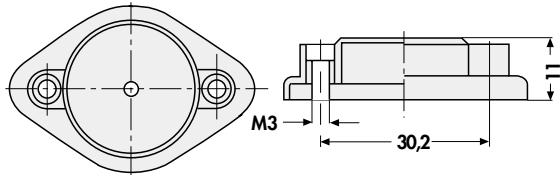
## Isolierkappen Isolierbuchsen

## Insulator Caps Insulator Sleeves

## Capots isolants Cousinets isolante



IK 341 3

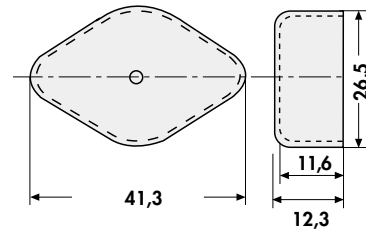


Unterschiedliche Flanschhöhen der Transistoren werden durch Einpreßbuchsen ausgeglichen.

Pressed in sleeves will compensate for different transistor flange levels.



IK 3



La compensation des diverses hauteurs des flasques de fixation des transistors est assurée par des canons noyés.

### Technische Daten:

Material: Kappen: glasfaserverstärktes Polyamid  
Brennbarkeitsklasse: UL 94: V-0  
Ausgleichsbuchsen: Messing, vernickelt

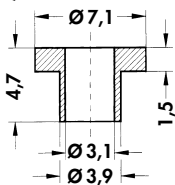
### Technical Data:

Material: Caps: glassfibre filled Polyamide  
Flammability: UL 94: V-0  
Pressed in sleeve: Brass, nickel plated

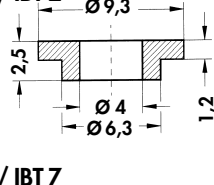
### Caractéristiques techniques:

Matière: Capots: Polyamide renforcé de fibre de verre  
Inflammabilité: UL 94: V-0  
Canons noyés: Laiton, nickelé

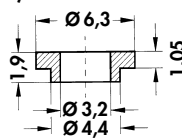
IB 1 / IBT 1



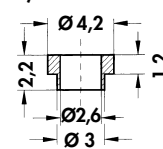
IB 2 / IBT 2



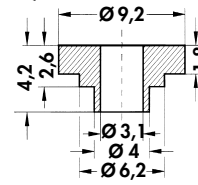
IB 3 / IBT 3



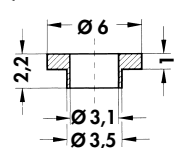
IB 4 / IBT 4



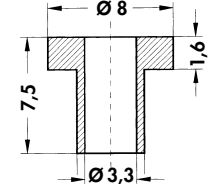
IB 5 / IBT 5



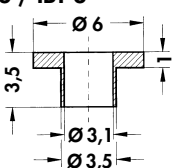
IB 6 / IBT 6



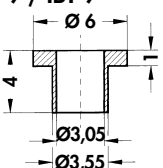
IB 7 / IBT 7



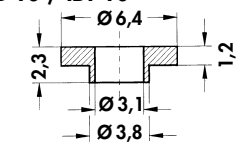
IB 8 / IBT 8



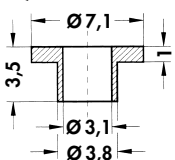
IB 9 / IBT 9



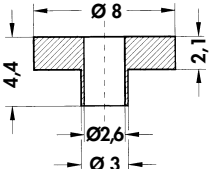
IB 10 / IBT 10



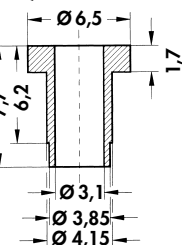
IB 11 / IBT 11



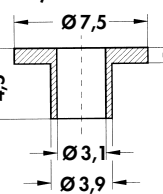
IB 12 / IBT 12



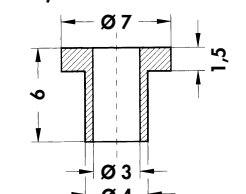
IB 13 / IBT 13



IB 14 / IBT 14



IB 15 / IBT 15



Art. Nr. Art. No. Art. n°	Material Material Matière	Formbeständigkeit Distortion Stabilité thermique	Brennbarkeitsklasse Flammability class Classe de combustibilité	Durchschlagfestigkeit Dielectric strength Tension de claquage
IB 1 – IB 5	Polysulfon, glasfaserverstärkt Polysulfone, glassfibre filled	-50°C...+170°C	UL 94: V-0	> 30 KV/mm
IB 6 – IB 7	Polysulfone renforcé de fibre de verre	-50°C...+190°C		> 60 KV/mm
IBT 1 – IBT 15	PTFE (Teflon)	-260°C...+250°C	UL 94: V-0	> 40 KV/mm
IB 8 – IB 15	Thermoplastik Kunststoff Thermoplastic compound Matière moulée thermoplastique	-10°C...+200°C	entsprechend according to corresponde UL 94: V-0	> 38 KV/mm