

TECHNICAL CHARACTERISTICS

MATERIAL
 INSULATOR: LCP
 FLAMABILITY RATING: UL94-V0
 COLOR: BLACK
 CONTACT MATERIAL: COPPER ALLOY
 CONTACT TYPE: STAMPED
 CONTACT PLATING: SELECTIVE GOLD
 LATCH: STAINLESS STEEL
 QUALITY CLASS: 5000 MATING CYCLES

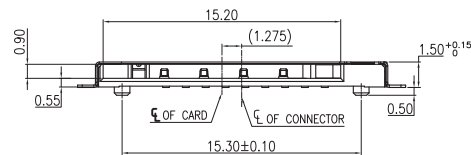
ENVIRONMENTAL
 OPERATING TEMPERATURE: -25 UP TO 85°C
 COMPLIANCE: LEAD FREE AND ROHS

ELECTRICAL
 CURRENT RATING: 0.5A
 WORKING VOLTAGE: 50VDC
 INSULATOR RESISTANCE: >100 MOHM
 DIELECTRIC WITHSTANDING VOLTAGE: 500VAC/MN
 CONTACT RESISTANCE: 100 mOHM MAX

SOLDERING
 REFLOW PROCESS ONLY

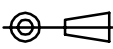
PACKAGING
 TAPE & REEL

CONTACT NO.	ASSIGNMENT
CD	SIM CARD DETECT
P8	RESERVE
P4	RESERVE
P7	I/O
P3	CLK
P6	Vpp
P2	RST
P5	GND
P1	Vcc



RoHS Compliant

G			
F	04-OCT-14	LAYOUT	AS
E	26-JUL-13	PIN ASSIGNMENT	QL
D	22-APR-13	LAYOUT UPDATE	QL
C	04-MAR-13	«UNLOCK» & DIM 9.0	QL
B	02-JAN-13	PART N° - PAGE 2	QL
A	08-JUL-12	PDF	GG
REV	DATE	FILE	BY

PROJECTION:

 APPROVAL: JTs

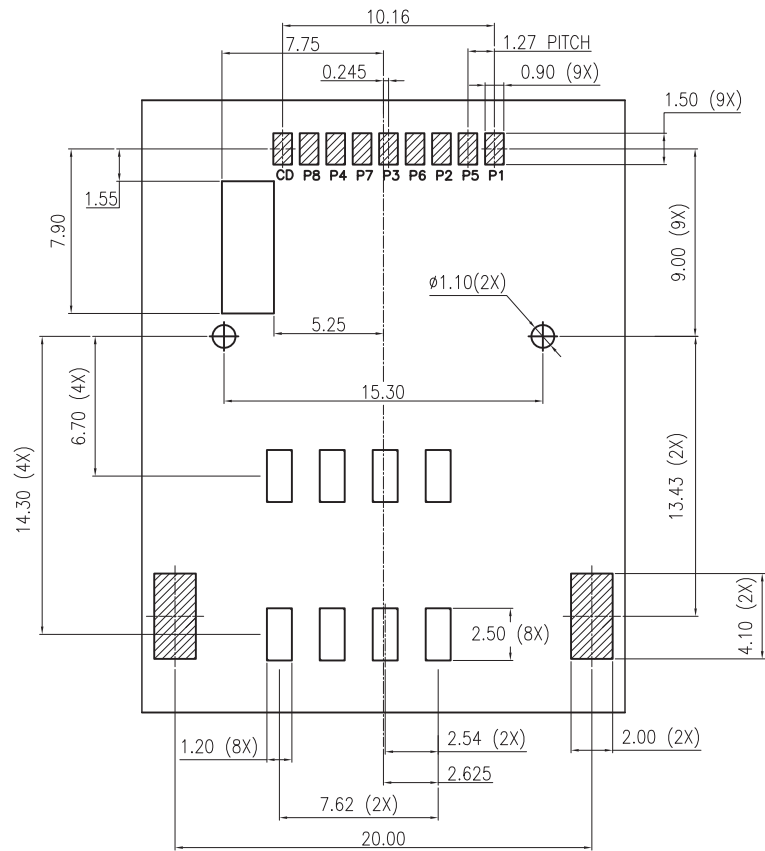
GENERAL TOLERANCE
 .X = +/- 0.2
 .XX = +/- 0.15
 UNIT: MM
 SCALE:
 SHEET: 1/4
 DRAW: AS



DESCRIPTION: WR-CRD Mega SIM_Push and Push_8 pins
 WERI PART NO: 693 013 050 811

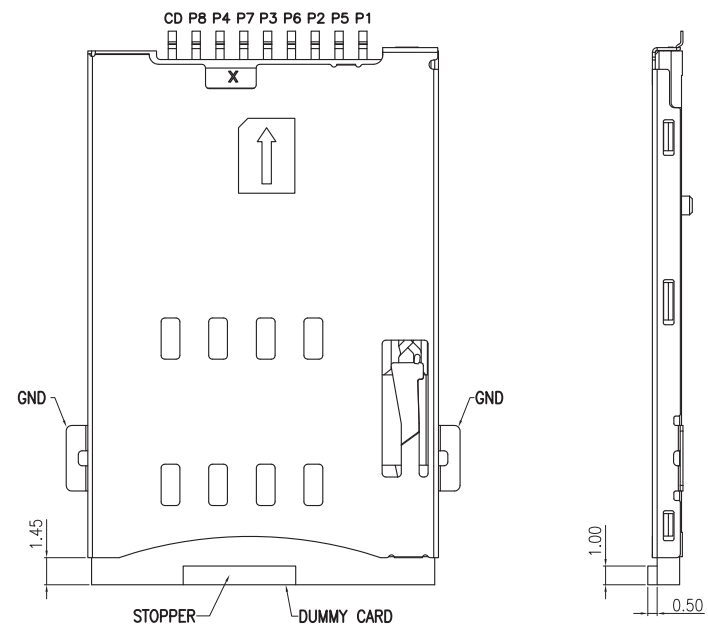
SIZE
A4

A
 B
 C

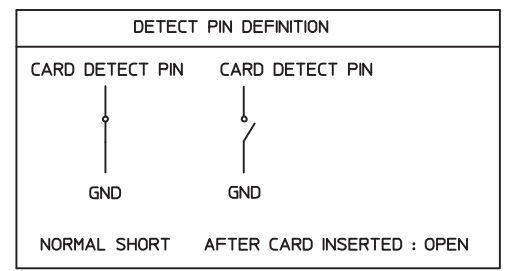


RECOMMENDED PCB LAYOUT
(GENERAL TOLERANCE ±0.05)

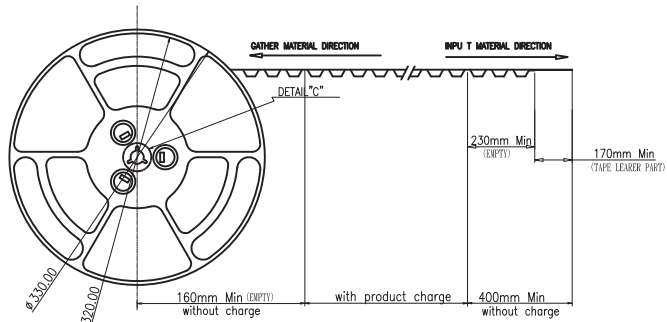
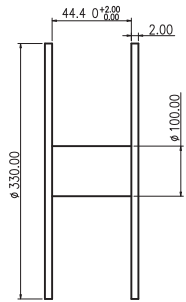
CIRCUIT TRACE KEEP OUT AREA
 SOLDERING PAD AREA



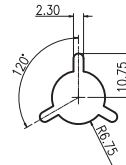
CONNECTOR WITH DUMMY CARD



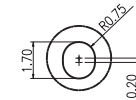
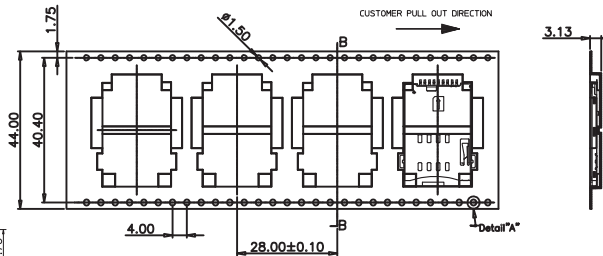
RoHS Compliant				PROJECTION: 	GENERAL TOLERANCE .X = +/- 0.2 .XX = +/- 0.15		
G							
F							
E							
D				APPROVAL: JTs	UNIT: MM	DESCRIPTION: WR-CRD Mega SIM_Push and Push_8 pins	
C					SCALE:		
B					SHEET: 2/4		WERI PART NO: 693 013 050 811
A					DRAW: AS		
REV	DATE	FILE	BY			SIZE A4	



SCALE 1:3



DETAIL "C"

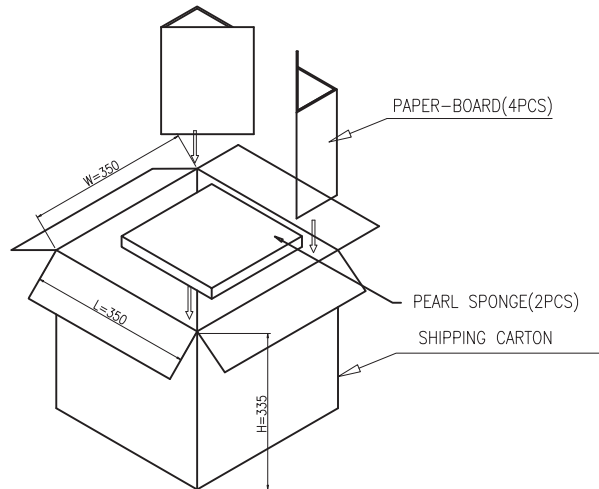
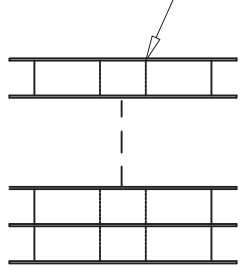


DETAIL "D"

NOTES:

1. STAPLES SHOULD ONLY BE USED TO SET UP CARTON. ALL CARTON CLOSURES MUST BE DONE WITH TAPE.
2. FILL PACKAGING EMBOSSED TAPE WITH THE QUANTITIES AS INDICATED IN THE CHART.
3. A QUANTITY OF 600 CONNECTORS PER REEL. A QUANTITY OF 3600 CONNECTORS PER SHIPPING CARTON.

PACKAGING REEL x 6 LAYERS

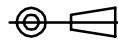


PCS/REEL	600
REEL/BOX	6
TOTAL (PCS)	3600
CTN SIZE	350*350*335MM
GW	5.76 KG
NW	8.65 KG
REEL MATERIAL	PS ,TRANSPARENT

RoHS Compliant

G			
F			
E			
D			
C			
B			
A			
REV	DATE	FILE	BY

PROJECTION:



APPROVAL: JTs

GENERAL TOLERANCE

.X = +/- 0.2

.XX = +/- 0.15

UNIT: MM

SCALE:

SHEET: 3/4

DRAW: AS



DESCRIPTION: WR-CRD Mega SIM_Push and Push_8 pins

WERI PART NO: 693 013 050 811

SIZE

A4

1

2

3

4

5

Cautions and Warnings:

This electronic component is designed and developed with the intention for use in general electronics equipments.

Before incorporating the components into any equipments in the field such as aerospace, aviation, nuclear control, submarine, transportation, (automotive control, train control, ship control), transportation signal, disaster prevention, medical, public information network etc. where higher safety and reliability are especially required or if there is possibility of direct damage or injury to human body, Würth Elektronik must be asked for a written approval.

In addition, even electronic component in general electronic equipments, when used in electrical circuits that require high safety, reliability functions or performance, the sufficient reliability evaluation-check for the safety must be performed before by the user before usage.

A

B

C

RoHS Compliant

PROJECTION:



GENERAL TOLERANCE

.X = +/- 0.2

.XX = +/- 0.15



APPROVAL: JC

UNIT: MM

SCALE:

SHEET: 4/4

DRAW: QL

DESCRIPTION: DISCLAIMER

WERI PART NO: DISCLAIMER

SIZE

A4

D

G					GENERAL TOLERANCE .X = +/- 0.2 .XX = +/- 0.15		DESCRIPTION: DISCLAIMER	SIZE A4
F								
E								
D								
C				APPROVAL: JC	UNIT: MM	DESCRIPTION: DISCLAIMER	SIZE A4	
B					SCALE:			
A	10-SEP-14	PDF	QL		SHEET: 4/4			WERI PART NO: DISCLAIMER
REV	DATE	FILE	BY		DRAW: QL			