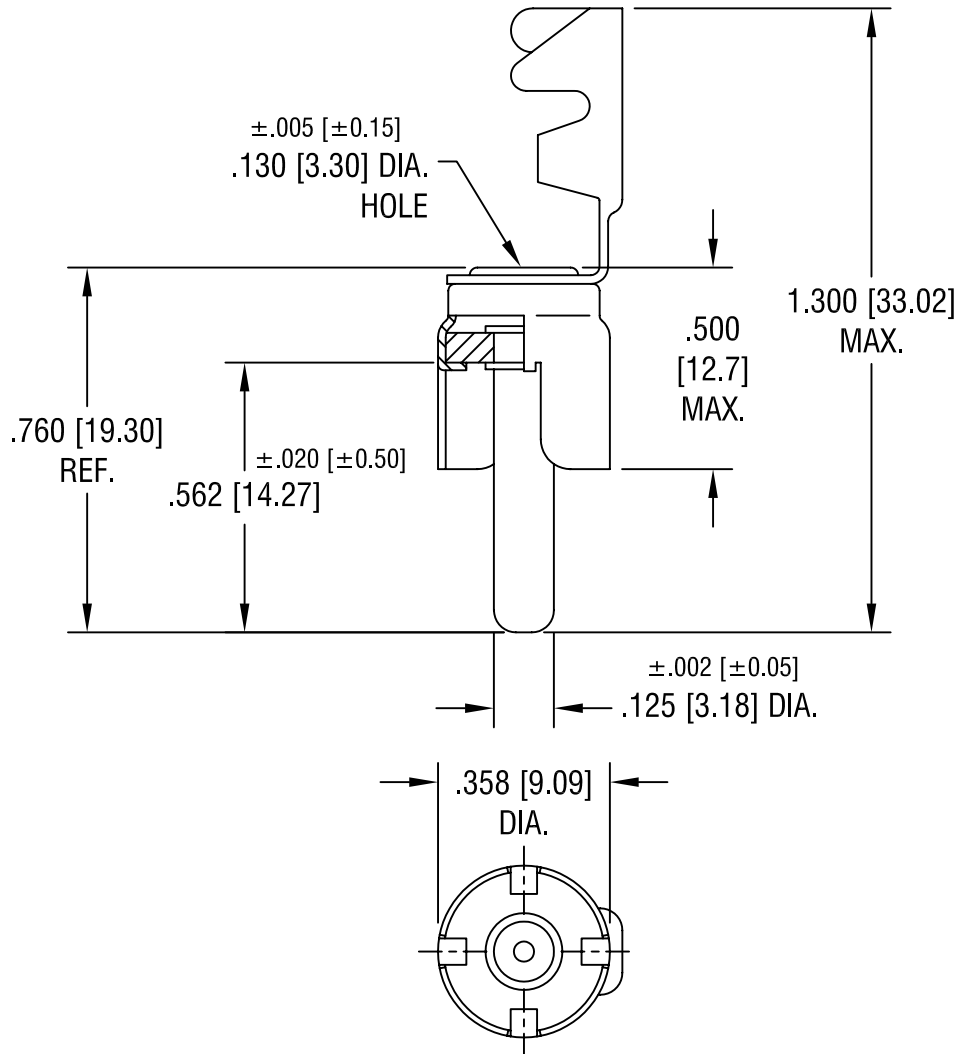


THIS DOCUMENT IS THE PROPERTY OF
KEYSTONE ELECTRONICS CORP. AND
SHALL NOT BE REPRODUCED, DISTRIBUTED
OR USED AS A BASIS FOR MANUFACTURE
WITHOUT PRIOR WRITTEN PERMISSION
FROM KEYSTONE ELECTRONICS CORP.



NOTES:

1. SHELL: STEEL, TIN PLATE
2. PIN: BRASS, NICKEL PLATE

KEYSTONE ELECTRONICS CORP.

ASTORIA, N.Y. 11105-2017

PART NAME

PHONO PLUG

MATERIAL

AS NOTED

FINISH

AS NOTED

DRN BY

BOONE

DATE

2.17.82

APP'D

SCALE

2.5X

8.25.98

CHANGE AS PER ECR 98-049

B

TOLERANCES

INCH [MM]

CODE

DWG NO.

DECIMAL $\pm .010$ [± 0.25]

C/M

ANGULAR $\pm 1^\circ$
UNLESS OTHERWISE SPECIFIED

565

DATE

DESCRIPTION

REV.