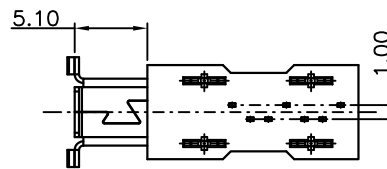


P.C. BOARD MOUNTING DIMENSIONS t=1.60mm
PCB TOLERANCE:±0.05



NOTES:

1.MATERIAL:

HOUSING:LCP WITH 30% G/F UL94 V-0 COLOR:BLACK
CONTACT:BRASS C2680R EH,T=0.25mm
BOARD LOCK:BRASS C2680R EH,T=0.30mm
SHELL:BRASS C2680R EH,T=0.30mm

2.FINISH:

CONTACT:15u" GOLD PLATING ON CONTACT AREA
100u" MIN. TIN PLATING ON SOLDER TAILS
50u" MIN.NICKEL UNDERPLATING OVER ALL
BOARD LOCK:50u" MIN.NICKEL UNDERPLATING OVER ALL

Product Number	Description
215D-SEB0	E SATA 7P Male Upright DIP, LCP Black With Shell, Contact Plating 15u"

UNLESS OTHERWISE SPECIFIED TOLERANCE		
ANGLES	ANG.	±5°
LINEAR	0.	±0.3
	0.0	±0.25
	0.00	±0.20
SCALE	AS SHOWN	UNIT: mm
DRAWN	Willis	2012/08/03
CHECKED	Angel	2012/08/03
APPROVED	Ken	2012/08/03



www.attend.com.tw

- △ Revise:
- △ Revise:
- △ Revise:

REV.	DESCRIPTION	DATE	REV.	DESCRIPTION	DATE	SIZE	REV.	FILE NAME
1			4			A4	1.0	215D-SEB0_B_2