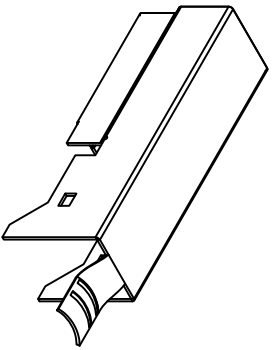


DATE

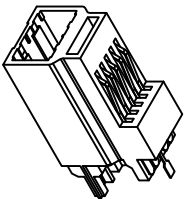
DESCRIPTION

REV.

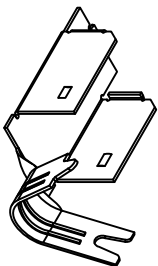
FRONT SHELL



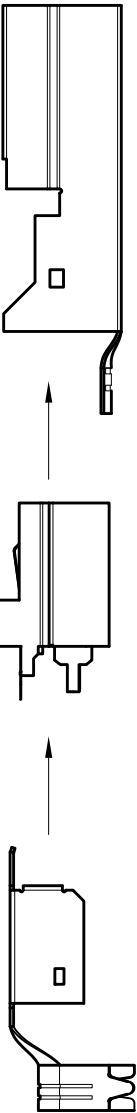
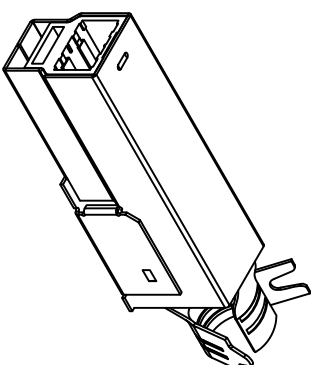
INSERTED BODY



REAR SHELL



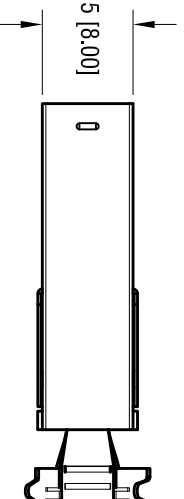
ASSEMBLED PLUG



1.417 [36.00]

.411 [10.44]

.315 [8.00]



PLUG SPECIFICATIONS:

SHELL: MAT'L- STEEL
 FINISH- NICKEL PLATE
 INSULATION: MAT'L- THERMOPLASTIC, UL 94V-0
 CONTACT: MAT'L- PHOSPHOR BRONZE
 FINISH- GOLD FLASH OVER NICKEL

ELECTRICAL CHARACTERISTICS:

RATED VOLTAGE: 30V (RMS)
 CONTACT CURRENT RATING: 1 Amp DC MAX.
 CONTACT RESISTANCE: 15m Ω min.
 DIELECTRIC WITHSTANDING VOLTAGE: 750V AC FOR 1 MINUTE
 MECHANICAL CHARACTERISTICS:
 OPERATING TEMPERATURE: -13°F (-25°C) TO 176°F (+80°C)
 DURABILITY: 1500 CYCLES MIN.

KEYSTONE ELECTRONICS CORP.

www.keyelco.com • ASTORIA, N.Y. 11105-2017 • Tel (718) 956-8900

PART NAME

USB 3.0 TYPE B PLUG KIT

MATERIAL

AS NOTED

FINISH

AS NOTED

TOLERANCES INCH [MM]
 DECIMAL $\pm .010$ [± 0.25]
 ANGULAR $\pm 1^\circ$
 UNLESS OTHERWISE SPECIFIED

CODE
C/M

DRN BY	DATE
NT	4.07.10
APP'D	SCALE
LN	1.5X

DWG NO.
952

THIS DOCUMENT IS THE PROPERTY OF
 KEYSTONE ELECTRONICS CORP. AND
 SHALL NOT BE REPRODUCED, DISTRIBUTED
 OR USED AS A BASIS FOR MANUFACTURE
 WITHOUT PRIOR WRITTEN PERMISSION
 FROM KEYSTONE ELECTRONICS CORP.