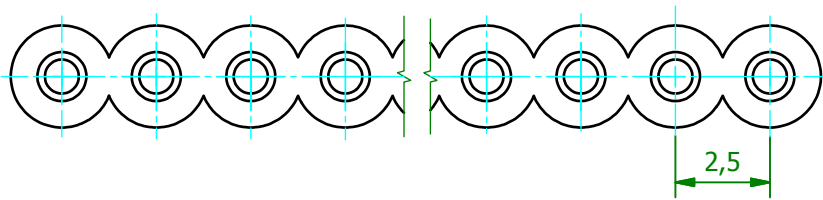
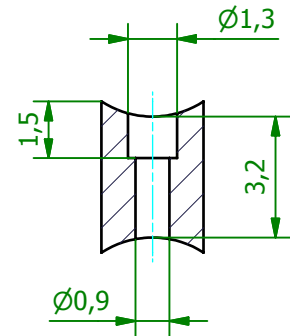
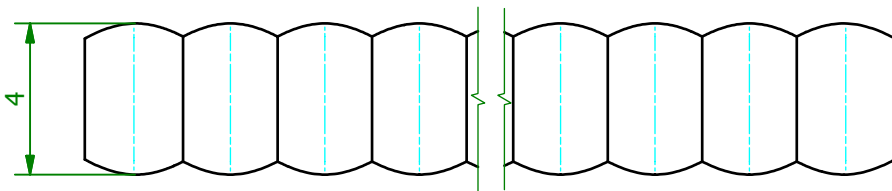
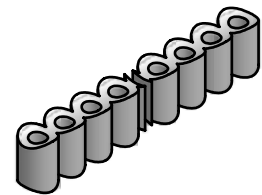


(5 : 1)



(2 : 1)



| | | | | | | | | | |
|---|--|--|---|------|-------------------|----------------------------------|-----------------------------|---------|---|
| Schutzvermerk gemäß DIN ISO 16016 beachten © Fischer Elektronik GmbH & Co. KG 2008 | | | Freimasstoleranz DIN ISO 2768m | | Oberfläche - | Kunde 77777 - Fischer Elektronik | | | |
| | | | | | | fischer elektronik | | | |
| | | | Datum | | Name | | Bezeichnung / Titel | | |
| | | | Erst. 13.08.2008 Bearb. 13.08.2008 | | Lochen Lochen | | MS 4016 für max. 16 pol. | | |
| | | | Werkstoff / Material glasfaserverstärktes Polyamid | | Zeichnungs-Nummer | | | Blatt | |
| | | | | | | 001026757 | | | 1 |
| Z. Änderungen | | | Datum | Name | C001009695.ipt | | | Blätter | |
| | | | | | | | | | 1 |