

IEC Connector C15A, Rewireable, Straight



Description

- Connector:
Screwing cable terminal,
- 1 Function:
Pin temperature 155 °C, Protection class I, Cable
- Note: cable guard has to be ordered separately, mating cable guards please find under accessories

Approvals

- VDE Certificate Number: 40009113
- CSA File Number: 27324

Weblinks

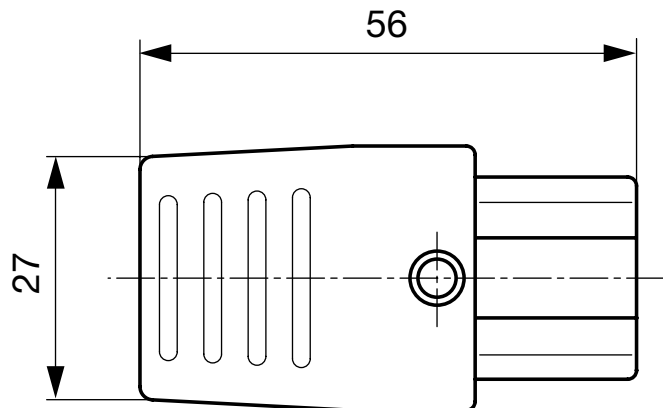
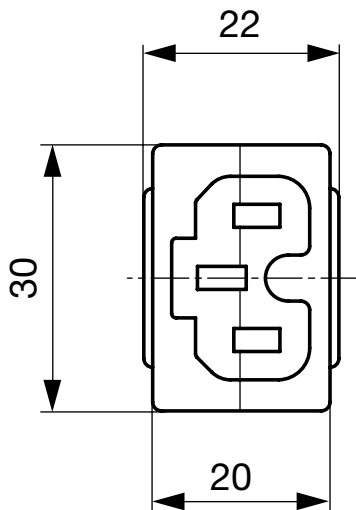
[pdf-datasheet](#), [html-datasheet](#), [General Product Information](#), [Approvals](#), [CE declaration of conformity](#), [RoHS](#), [CHINA-RoHS](#), [REACH](#), [Mating Connectors](#), [e-Shop](#), [SCHURTER-Stock-Check](#), [Distributor-Stock-Check](#), [CAD-Drawings](#), [Accessories](#), [Detailed request for product](#)

Technical Data

Ratings IEC	10A / 250VAC; 50Hz
Ratings UL/CSA	15A / 250VAC; 60Hz
Dielectric Strength	> 4 kVAC between L-N > 2 kVAC between L/N-PE (1 min/50Hz)
Allowable Operation Temp.	-25 °C to 155 °C
Degree of Protection	from front side IP 20 acc. to IEC 60529
Protection Class	Suitable for appliances with protection class I acc. to IEC 61140
Terminal	Screw clamps
Material: Housing	black

Connector	C15A acc. to IEC 60320 UL 498, CSA C22.2 no. 42 (for hot conditions) pin-temperature 155 °C, 10A, Protection Class I
-----------	---

Dimensions



Config. Code

0102 - H - A B C 0 - D - E J

The characters are placeholders for the correspondingly keys of selections from the key tables.

0102 - H - A B C 0 - D - E J = Type

Type	Configuration key
protection class I	X

0102 - H - A B C 0 - D - E J = Terminals

Terminal L	Configuration key
screw terminal	A

0102 - H - A B C 0 - D - E J = Terminals

Terminal N	Configuration key
screw terminal	A

Symbols similar as in table A

0102 - H - A B C 0 - D - E J = Terminals

Terminal Ground	Configuration key
screw terminal	A

Symbols similar as in table A

0102 - H - A B C 0 - D - E J = Color

Color	Configuration key
Black	A

0102 - H - A B C 0 - D - E J = Style

Style	Configuration key
for cord assembly	8

0102 - H - A B C 0 - D - E J = Condition

Condition	Configuration key
assembled	1
disassembled	2

All Variants

Config. Code	Description	Order Number
0102-X-AAA0-A-81	0102, IEC Connector, C15A, 155°C, version: I, L: screw terminal, N: screw terminal, ground: screw terminal, color: Black, design: for cord assembly, condition:assembled	4310.0003

The listed variants should be available from stock Other versions on request www.schurter.com/contact

Most Popular.

Availability for all products can be searched real-time: <http://www.schurter.com/en/Stock-Check/Stock-Check-SCHURTER>

Max. torque for screws: Terminals: 0.8 Nm, Cable clamps: 1.2 Nm, Cover: 1.2 Nm

Packaging unit 50 Pcs

Accessories

Description



Cable Guard KT14
PVC Cable Guard for rewireable connectors

Mating Inlets/Plugs

Category / Description

[Appliance Inlet Overview complete](#)



IEC Appliance Inlet C14, Screw-on Mounting, Front or Rear Side, Solder or Quick-connect Terminal	6100-3
IEC Appliance Inlet C14, Snap-in Mounting, Front Side, Solder or Quick-connect Terminal	6100-4
IEC Appliance Inlet C18, Screw-on Mounting, Front or Rear Side, Solder or Quick-connect Terminal	6102-3
IEC Appliance Inlet C18, Snap-in Mounting, Front Side, Solder or Quick-connect Terminal	6102-5
IEC Appliance Inlet C14, mates to Felcom	6150
Appliance Inlet further types to 0102	...

[Distribution Unit Overview complete](#)



Distribution Unit for Snap-in Mounting with 1 IEC Appliance Inlet C14 and 1 Appliance Outlet F	0712
Distribution Unit with 1 IEC Appliance Inlet C14 and 2 Appliance Outlets F, Shuttered	4741
Distribution Unit with 1 IEC Appliance Inlet C14 and 4 Appliance Outlets F	4747
Distribution Unit with 1 IEC Appliance Inlet C14 or Power Cord, 5 or 6 IEC Appliance Outlets F and Extra Components	4740
EMC Power Strip with Line Filter	FLBB
Distribution Unit further types to 0102	...

[Plug Overview complete](#)



IEC Plug E, Cord Connector (Rewireable), Straight, max. cable Diameter 8.5 mm	4732
IEC Plug E, Cord Connector (Rewireable), Straight, max. Cable Diameter 10 mm	4735
IEC Plug E, Cord Connector (Rewireable), Straight	9009
IEC Plug E, Cord Connector (Rewireable), Angled, max. Cable Diameter 8.5 mm	4733
IEC Plug E, Cord Connector (Rewireable), Angled, max. Cable Diameter 10 mm	4736
Plug further types to 0102	...

[Power Entry Module Overview complete](#)



IEC Appliance Inlet C14 or C18 with Line Switch 1- or 2-pole	DC11
IEC Appliance Inlet C14 with Line Switch 1-pole	KEB1
IEC Appliance Inlet C14 with Line Switch 2-pole	KEB2
IEC Appliance Inlet C14 with Line Switch 2-pole	DC21
IEC Appliance Inlet C14 with Line Switch 2-pole, Fuseholder 1- or 2-pole	DD11
Power Entry Module further types to 0102	...

[Power Entry Module with line filter Overview complete](#)



IEC Appliance Inlet C14 with Filter, Line Switch 1-pole	KFB1
IEC Appliance Inlet C14 with Filter, Line Switch 2-pole	KFB2
IEC Appliance Inlet C14 with Filter, Line Switch 1- or 2-pole, Front or Rear Side Mounting	DC12
IEC Appliance Inlet C14 with Filter, Line Switch 1- or 2-pole, PCB Mounting	DC22
IEC Appliance Inlet C14 with Filter, Fuseholder 1- or 2-pole, Line Switch 2-pole	DD12
Power Entry Module with line filter further types to 0102	...