

SPECIFICATION

Main Internal Antenna
Embedded Dielectric Penta-Band Antenna

Part No. : 2JE03

2J s.r.o.

Notes

The contents of this data sheet are subject to change without notice. Please confirm the specifications and delivery conditions when placing your order.

<http://www.2j-antennae.com>

1. SPECIFICATIONS

1.1. Electrical Specifications

ITEM	GSM850	GSM900	DCS	PCS	UMTS	Remark
Frequency [MHz]	824~894	880~960	1710~1880	1850~1990	1920~2170	Notes :1)
Peak Gain [dBi]	1.3	2.4	6.4	5.9	4.8	Notes :1)
Eff.[%] @Min	42.4%	57.3%	80.7%	84.0%	82.1%	Notes :1)
VSWR	3.0 : 1 max					Notes :1)
	3.5:1 Max @725~855MHz		3.0:1 Max @1510~2070MHz			Notes :2)
Polarization	Linear					Notes :1)
Azimuth Beam Pattern	Omni-directional					Notes :1)
Impedance	50 Ω					Notes :1)

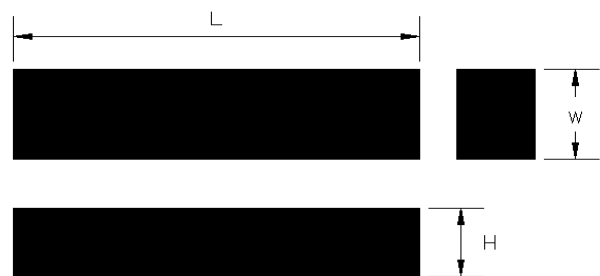
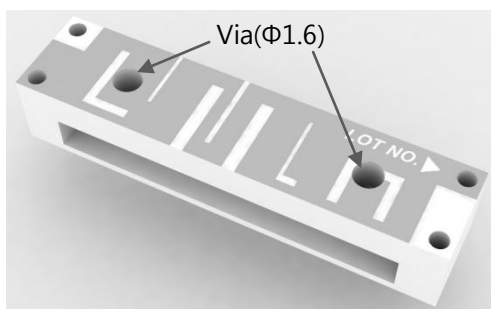
※Notes:1) Measured on the matched EV test board.

Notes:2) Measured on the matched manual.

1.2. Mechanical Specifications

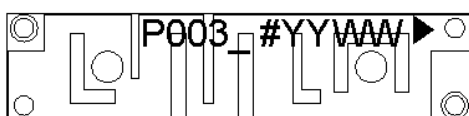
Electrode	Silver	-
Dimensions (L x W x H)	24.0 x 5.5 x 4.4	mm
Operating Temperature	-35 ~ +85	°C

1.3. Appearance and Dimensions



Unit : mm
Tolerance : ±0.15

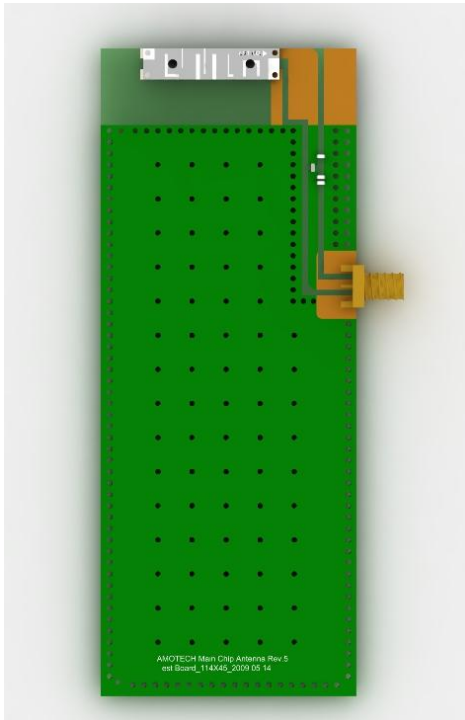
1.4 Marking



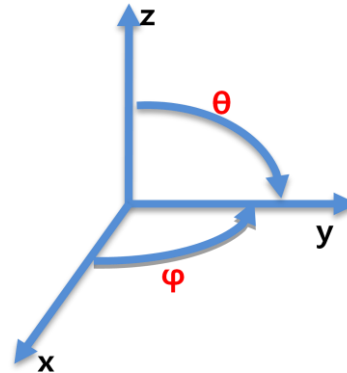
- P003** : Model No.
- YY** : Year (ex: 2010 → 10)
- WW** : Week (ex: 1st week→01, 7th week→07)
- ▶** : Feeding point

2. MEASUREMENT

2.1. SET for Measurement



Board size: 114x45mm

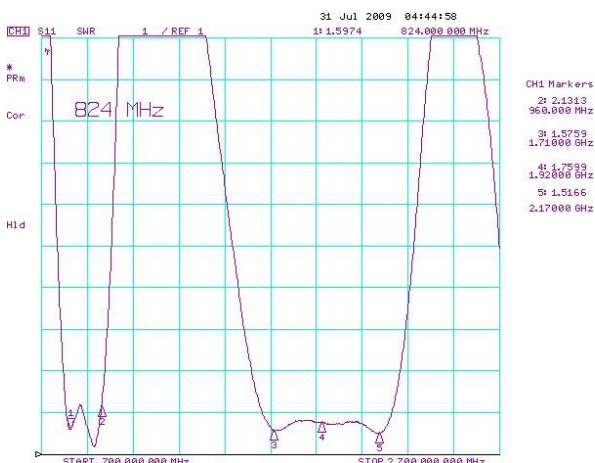


Antenna Radiation coordinate system

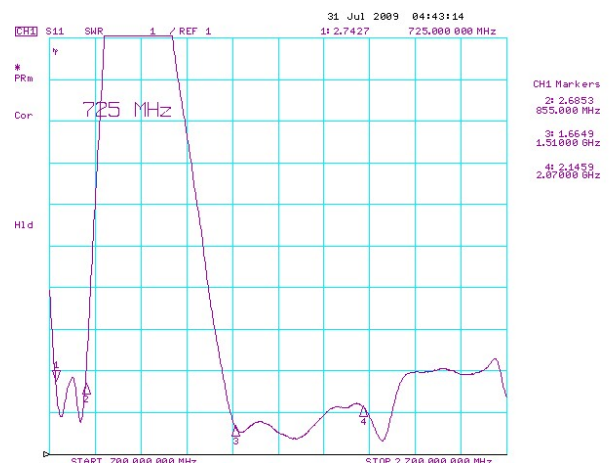
2.2. Electrical Characteristic

◆ S_{11} (VSWR)

Penta Band (GSM850&900, DCS, PCS, UMTS)



- VSWR @ EV Board -



- VSWR @ Manual Jig -

2.3. Radiation Characteristic

- Measurement Setup

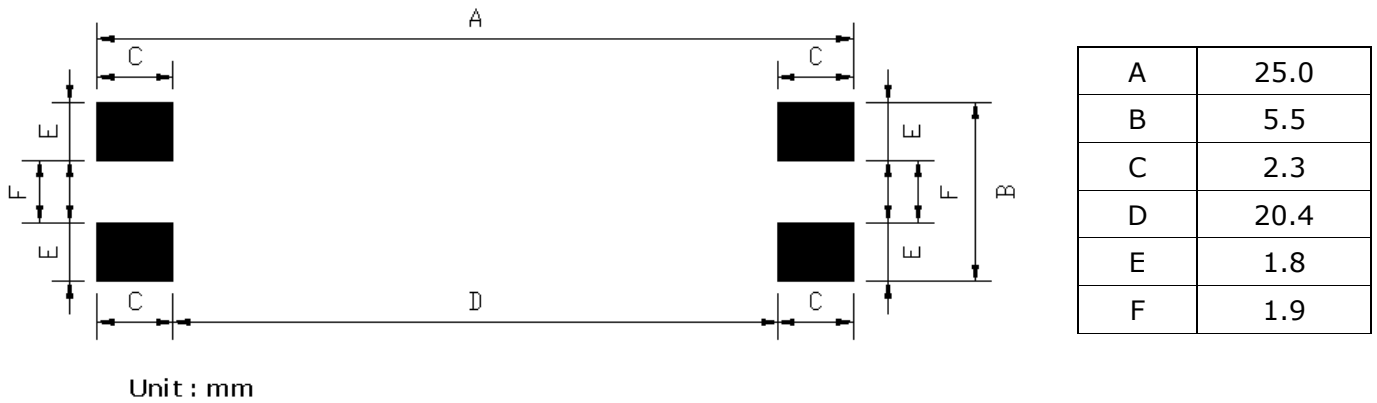
- 6mx3mx3m Anechoic Chamber
- Matching on the standard test board (114 x 45mm)
- Temp. : 25°C / Humidity : 50~55%

- Measurement Result

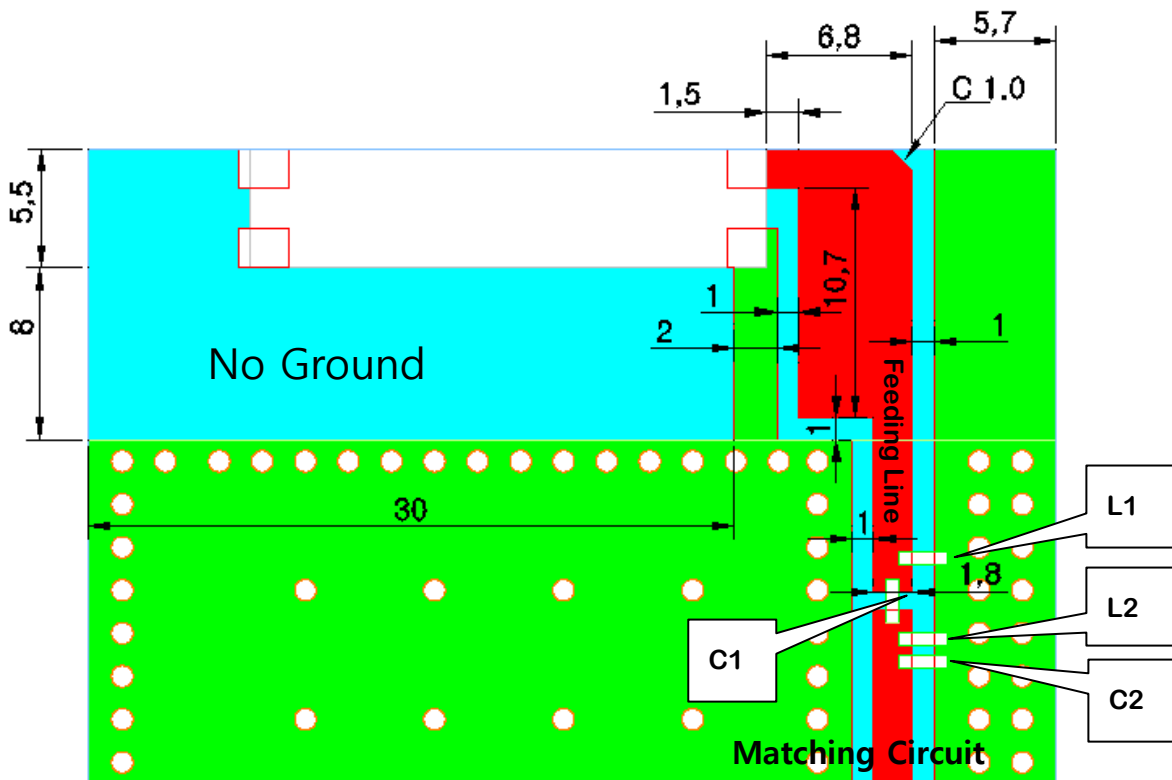
Band	Frequency MHz]	Ave. gain (dBi)	Peak. Gain (dBi)	Eff.(%)
GSM850	824	-3.7	-0.3	42.4
	849	-3.6	-0.2	43.8
	869	-3.3	0.4	47.1
	894	-2.5	1.3	56.1
GSM900	880	-2.4	1.5	57.3
	915	-1.9	2.2	64.6
	925	-1.8	2.4	65.8
	960	-2.3	1.8	58.2
DCS	1710	-0.4	6.4	90.9
	1785	-0.9	5.8	80.7
	1805	-0.6	6.1	86.2
	1880	-1.1	5.4	76.8
PCS	1850	-0.8	5.6	84.0
	1910	-0.5	5.9	89.8
	1930	-0.5	5.8	88.6
	1990	-0.6	5.5	86.7
UMTS	1920	-0.7	4.8	84.9
	1980	-0.9	4.5	82.1
	2110	-0.5	4.6	89.5
	2170	-0.2	4.5	95.4

3. SOLDERING RECOMMENDATIONS

3.1. Soldering Land Pattern



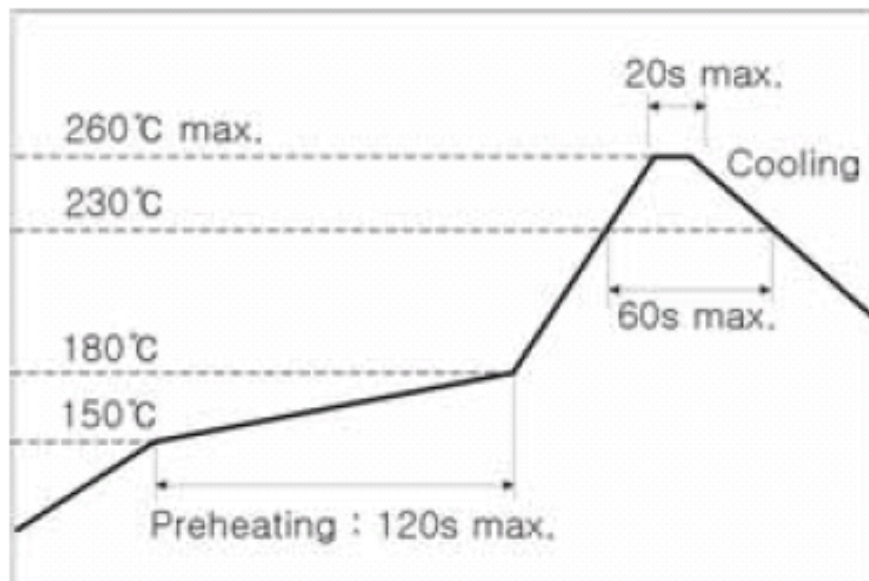
3.2. Free Space Size



C1 (Series)	3.6pF
C2 (Shunt)	1.8pF
L1 (Shunt)	3.9nH
L2 (Shunt)	2.7nH

3.2. Soldering Profile

Solder paste : Sn/Ag/Cu:96.5/3.0/0.5



This product is designed for reflow soldering only. Do not use flow (wave) soldering.

- ① Use non-activated flux (Cl content 0.2% max.)
- ② Follow the recommended soldering conditions to avoid damage.
- ③ Reflow-cycle is max. 3 times.

4. ATTACHMENT

