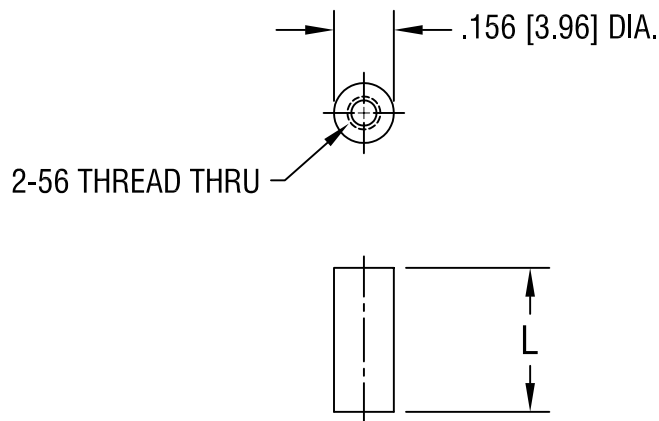


THIS DOCUMENT IS THE PROPERTY OF  
KEYSTONE ELECTRONICS CORP. AND  
SHALL NOT BE REPRODUCED, DISTRIBUTED  
OR USED AS A BASIS FOR MANUFACTURE  
WITHOUT PRIOR WRITTEN PERMISSION  
FROM KEYSTONE ELECTRONICS CORP.



| PART NO. | 'L' DIM.    |
|----------|-------------|
| 1802A    | .187 [4.75] |
| 1802B    | .250 [6.35] |
| 1802C    | .312 [7.92] |
| 1802D    | .375 [9.53] |

|                                   |                           |        |                |
|-----------------------------------|---------------------------|--------|----------------|
| <b>KEYSTONE ELECTRONICS CORP.</b> |                           |        |                |
| ASTORIA, N.Y. 11105-2017          |                           |        |                |
| PART NAME                         |                           |        |                |
| THREADED ROUND STANDOFF           |                           |        |                |
| MATERIAL                          |                           |        |                |
| BRASS                             |                           |        |                |
| FINISH                            |                           | DRN BY | DATE           |
| ZINC PLATE                        |                           | BOONE  | 3.9.98         |
|                                   |                           | APPD   | SCALE          |
|                                   |                           |        | 2X             |
| TOLERANCES                        | INCH [MM]                 | CODE   | DWG NO.        |
| DECIMAL                           | $\pm .005$ [ $\pm 0.15$ ] | C/M    | <b>1802A-D</b> |
| ANGULAR                           | $\pm 1^\circ$             |        |                |
| UNLESS OTHERWISE SPECIFIED        |                           |        |                |

| DATE | DESCRIPTION | REV. |
|------|-------------|------|
|      |             |      |