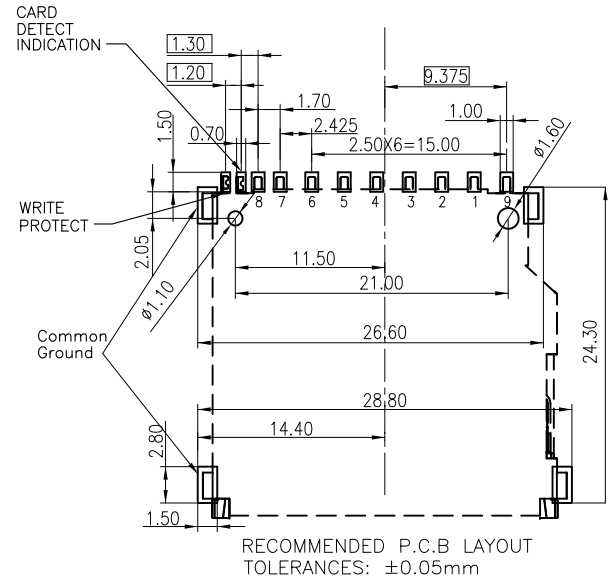


| PIN# | NAME |
|------|---------|
| 1 | CD/DAT3 |
| 2 | CMD |
| 3 | VSS1 |
| 4 | VDD |
| 5 | CLK |
| 6 | VSS2 |
| 7 | DAT0 |
| 8 | DAT1 |
| 9 | DAT2 |

SPECIFICATION
MATERIAL
 Insulator: LCP UL94V-0
 Contacts: Copper Alloy
 Shell: Copper Alloy
CONTACT PLATING
 Underplate: 50u" Nickel
 Contact Area: 15u" Gold Plating
 Solder Tails Area: 100u" Tin(Lead Free)
ELECTRICAL
 Current Rating: 1 Amps Max.
 Contact Resistance: 100 mohms Max.
 Insulation Resistance: 1000 Mohms Min @ 500 VDC
MECHANICAL
 Mating Cycles: 10000 Cycles
 Temperature Range: -25°C To +85°C

PRODUCT NUMBER:
 104C-T A A 0-R
 1 2 3 4

- 1.Type
T:Top Mount
- 2.Contact Plating
A:15u"Gold Plating
- 3.Stand Off
A:0mm
- 4.RoHS



| REV. | DESCRIPTION | DATE | REV. | DESCRIPTION | DATE | SIZE | REV. | FILE NAME |
|------|-------------|------|------|-------------|------|------|------|-----------------|
| 1 | | | 4 | | | A4 | 1.0 | 104C-TAA0-R_B_3 |

| | | | | |
|--------------------------------------|----------|----------|--------------------------|-------------|
| UNLESS OTHERWISE SPECIFIED TOLERANCE | | | DRAWN NAME: | |
| ANGLES | ANG. | ±5° | SD Socket Top Mount Type | |
| LINEAR | 0. | ±0.3 | www.attend.com.tw | |
| | 0.0 | ±0.25 | DRAWN: Willis | |
| | 0.00 | ±0.20 | CHECKED: Angel | |
| SCALE | AS SHOWN | UNIT: mm | APPROVED: Ken | |
| | | | 2012/08/03 | |
| | | | 2012/08/03 | |
| | | | 2012/08/03 | |
| | | | PRODUCT NO. | 104C-TAA0-R |



www.attend.com.tw
 DRAWN NAME: Willis
 CHECKED: Angel
 APPROVED: Ken
 PRODUCT NO.: 104C-TAA0-R
 FILE NAME: 104C-TAA0-R_B_3