



CONTENITORI PER ELETTRONICA ENCLOSURES FOR ELECTRONICS

EL BAG SIMP S.r.l. - 20143 Milano - Via Watt 15/7
Tel. +39 2 58106288 - Fax +39 2 89401339
www.elbag.net - e-mail info@elbag.net
C.F./P.IVA / VAT 13286120152

SERIES MR/K

The modular enclosures of K Series are suitable for mounting on DIN Rail. They have the possibility to house one pcb in the base and one pcb under the front panel.

The standard version allows to use any kind of connector or terminal block.

The enclosure is assembled by snapping the cover on the base, and therefore locking screws are not necessary.

With respect to traditional enclosures, the K Series offers more comfortable lay-out of terminals and connectors, due to the fact there are no separators (only present in /9KD)

The front panel can be flat or curved, in grey, clear, or transparent red.

The curved front panel are hinged, therefore allowing the access to the upper part of the enclosure.

Standard material is Blend PC/ABS, on request UL94V0.

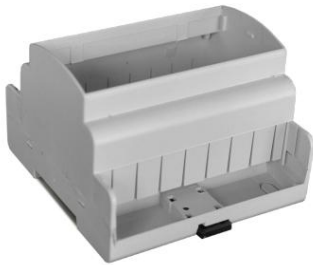
Standard colour is light grey RAL7035. Special colours on request.



MR3/K



MR4/K



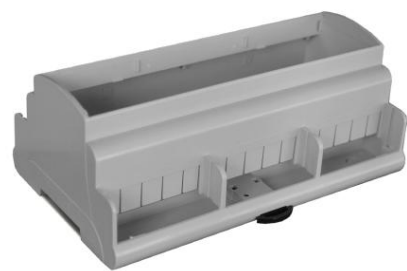
MR5/K



MR6/K



MR9/K



MR9/KD