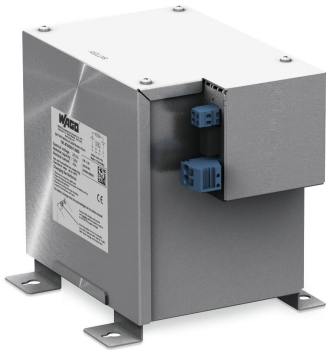


Data sheet | Item number: 787-878/001-3000

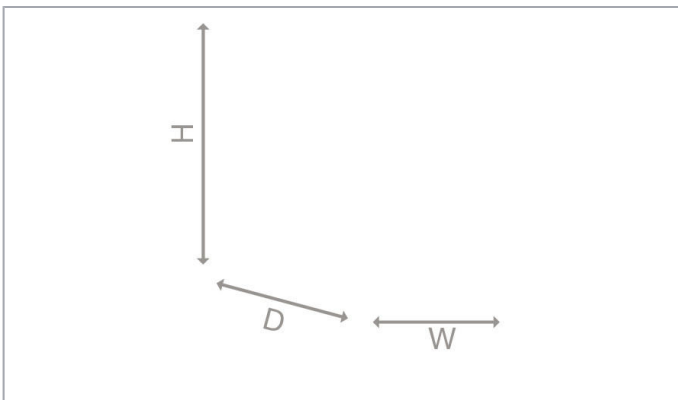
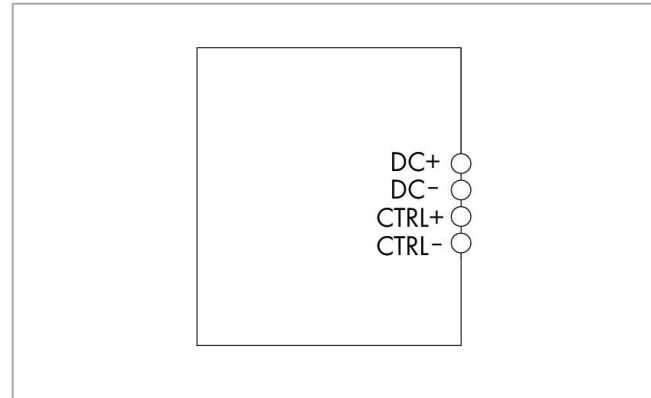
Pure Lead Battery Module; 24 VDC input voltage; 40 A output current;
Capacity: 13 Ah; with battery control

www.wago.com/787-878/001-3000



 Picture differs from the item.

RoHS  Compliant 



Item description

Features:

- Pure lead battery module: 2 x Genesis EPX battery per module
- Intelligent battery management (battery control)
- Optional coated PCB
- Pluggable connection technology (WAGO MULTI CONNECTION SYSTEM)

Subject to changes. Please also observe the further product documentation!

WAGO Kontakttechnik GmbH & Co. KG
Hansastr. 27
32423 Minden
Phone: +49571 887-0 | Fax: +49571 887-169
Email: info.de@wago.com | Web: www.wago.com

Do you have any questions about our products?
We are always happy to take your call at +49 (571) 887-44222.



Data

Technical data

Input

| | |
|--|---------|
| Nominal input voltage $U_{i\text{ nom}}$ | DC 24 V |
|--|---------|

Output

| | |
|---|---------|
| Nominal output voltage $U_{o\text{ nom}}$ | DC 24 V |
|---|---------|

| | |
|---|------|
| Nominal output current $I_{o\text{ nom}}$ | 40 A |
|---|------|

Energy storage system

| | |
|------------------|-------|
| Battery capacity | 13 Ah |
|------------------|-------|

| | |
|------------------|------------|
| Charging current | ≤ 5 A |
|------------------|------------|

| | |
|-----------------------|-----------------|
| End-of-charge voltage | DC 27 V (25 °C) |
|-----------------------|-----------------|

Signaling and communication

| | |
|-----------|--------------------------|
| Signaling | Battery control (C+; C-) |
|-----------|--------------------------|

Circuit protection

| | |
|---------------|------------|
| Internal fuse | 2 x T 25 A |
|---------------|------------|

Safety and protection

| | |
|------------------|-----|
| Protection class | III |
|------------------|-----|

| | |
|-----------------|---------------------|
| Protection type | IP20 (per EN 60529) |
|-----------------|---------------------|

| | |
|----------------------|---|
| Overvoltage category | I |
|----------------------|---|

| | |
|------------------|---|
| Pollution degree | 2 |
|------------------|---|

| | |
|--------------------|-----|
| Parallel operation | Yes |
|--------------------|-----|

| | |
|---------------------|--------------------------------|
| Service life (typ.) | 15 / 8 / 4 a (20 / 30 / 40 °C) |
|---------------------|--------------------------------|

Connection data

| | |
|---------------------|--------------|
| Connection type (1) | Input/Output |
|---------------------|--------------|

| | |
|-----------------------|---------------------|
| Connection technology | Push-in CAGE CLAMP® |
|-----------------------|---------------------|

| | |
|----------------|-----------------|
| WAGO Connector | WAGO 831 Series |
|----------------|-----------------|

Subject to changes. Please also observe the further product documentation!

WAGO Kontakttechnik GmbH & Co. KG

Hansastr. 27

32423 Minden

Phone: +49571 887-0 | Fax: +49571 887-169

Email: info.de@wago.com | Web: www.wago.com

Do you have any questions about our products?

We are always happy to take your call at +49 (571) 887-44222.



| | |
|---------------------------|--|
| Solid conductor | 0.5 ... 10 mm ² / 20 ... 8 AWG |
| Fine-stranded conductor | 0.5 ... 10 mm ² / 20 ... 8 AWG |
| Strip length | 13 ... 15 mm / 0.51 ... 0.59 inch |
| Connection type 2 | Battery control |
| Connection technology 2 | CAGE CLAMP® |
| WAGO Connector 2 | WAGO 231 Series |
| Solid conductor 2 | 0.08 ... 2.5 mm ² / 28 ... 12 AWG |
| Fine-stranded conductor 2 | 0.08 ... 2.5 mm ² / 28 ... 12 AWG |
| Strip length 2 | 8 ... 9 mm / 0.31 ... 0.35 inch |
| Line length (max.) | 3 m |

Physical data

| | |
|--------|-----------------------|
| Width | 217 mm / 8.543 inch |
| Height | 186 mm / 7.323 inch |
| Depth | 199.5 mm / 7.854 inch |

Mechanical data

| | |
|---------------|-------------------------|
| Mounting type | Direct screw connection |
|---------------|-------------------------|

Material data

| | |
|--------|---------|
| Weight | 12300 g |
|--------|---------|

Environmental requirements

| | |
|---|--|
| Surrounding air temperature (operation) | -40 ... 60 °C |
| Surrounding air temperature (storage) | -40 ... 60 °C |
| Relative humidity | 5 ... 80 % (no condensation permissible) |
| Pollution degree | 2 |
| Self-discharging | 3 % per month at 20 °C |
| Commissioning | < 6 months at 30 ... 40 °C |

Standards and specifications

| | |
|--------------------|----|
| Conformity marking | CE |
|--------------------|----|

Commercial data

| | |
|----------------|-----|
| Packaging type | BOX |
|----------------|-----|

Subject to changes. Please also observe the further product documentation!



| | |
|-----------------------|---------------|
| Country of origin | DE |
| GTIN | 4055143739177 |
| Customs tariff number | 85044082900 |

Downloads

Documentation

Bid Text

| | | | |
|----------------------------------|--------------|-----------------|----------|
| 787-878/001-3000 docx - Datei | 12. 12. 2019 | docx 18.5 kB | Download |
| 787-878/001-3000 X81 - Datei | 12. 12. 2019 | xml 5.2 kB | Download |

Instruction Leaflet

| | | | |
|--|------------|-----------------|----------|
| Pure lead battery module DC 24 V, 2.5 Ah / DC 24 V, 13 Ah | 8. 1. 2018 | pdf 347.7 kB | Download |
|--|------------|-----------------|----------|

Environmental Product Compliance

Compliance Search

| | | |
|---|-----|----------|
| Environmental Product Compliance 787-878/001-3000 Pure Lead Battery Module; 24 VDC input voltage; 40 A output current; Capacity: 13 Ah; with battery control | URL | Download |
|---|-----|----------|

Installation Notes

Subject to changes. Please also observe the further product documentation!