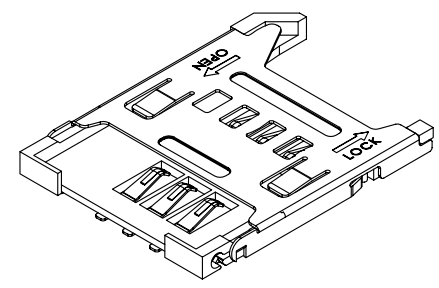
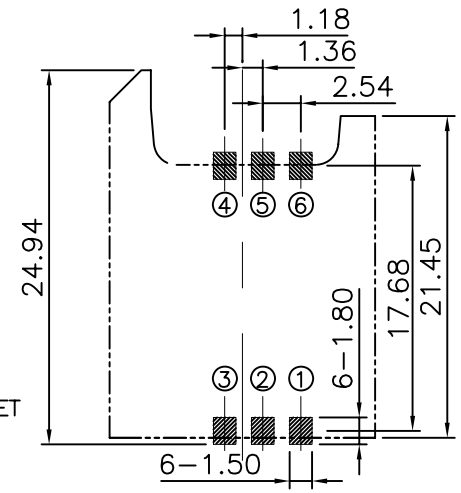
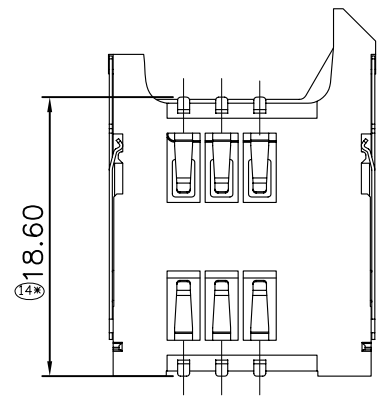
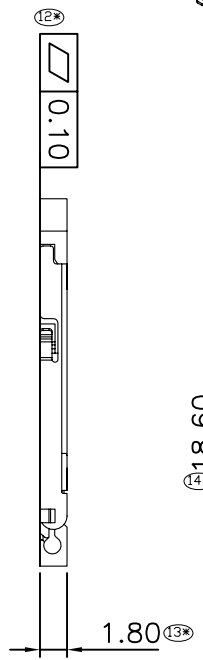
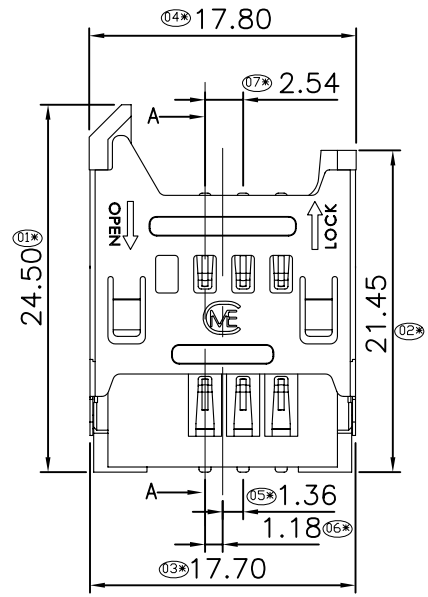
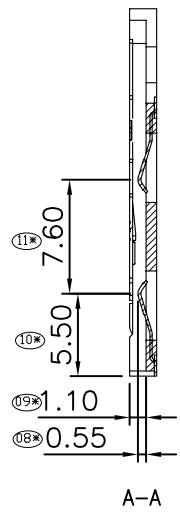


1 2 3 4 5 6 7 8 9 10

③	SHELL	STAINLESS STEEL		
②	CONTACT	COPPER ALLOY	GOLD	
①	HOUSING	HI/TEMP	BLACK	
NO.	DESCRIPTION	MATERIAL	COLOR	REMARK



MATERIALS
 1.HOUSING:HI-/TEMP,(UL 94V-0).BLACK.
 2.TERMINAL:COPPER ALLOY(T=0.15mm).GOLD PLATED OVER NICKEL.
 3.COVER:STAINLESS STEEL(T=0.2mm)
 SPECIFICATION
 1.CURRENT RATING:1.0 A. MAX
 2.DIELECTRIC WITHSTANDING VOLTAGE: 500V AC R.M.S. FOR ONE MINUTE.
 3.INSULATION RESISTANCE:1000MΩ MIN. AT 500V DC.
 4.CONTACT RESISTANCE: 30mΩ MAX
 5.OPERATING TEMPERATURE: -40°C TO +85°C



- ① VCC
- ② RESET
- ③ CLK
- ④ GND
- ⑤ VPP
- ⑥ I/O

RECOMMEND P.C.B LAYOUT
 TOLERANCE ± 0.05
 TOP VIEW

Product Number	Description
115G-AAAA-R	SIM Card Socket 6Pin Hinge Type H=1.8mm ,Gold Flash Plating,Without Peg

UNLESS OTHERWISE SPECIFIED TOLERANCE	
ANG.	±5°
0.	±0.3
.0	±0.25
.00	±0.20
SCALE:	AS SHOWN
UNIT:	mm
DRAWN	Willis 2011/03/11
CHECKED	Angel 2011/03/11
APPROVED	Ken 2011/03/11

Attend
 ATTEND TECHNOLOGY INC.
 www.attend.com.tw

DRAWN NAME:
 SIM Card Socket Hinge Type H=1.8mm
 PRODUCT NO. 115G-AAAA-R
 FILE NAME: 115G-AAAA-R_B_3

REV.	DESCRIPTION	DATE	SIZE	REV.
1			A4	