

1SNK505910R0000 ✓ ACTIVE

ENTRELEC

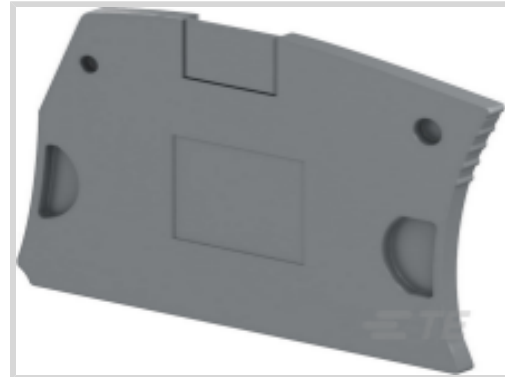
TE Internal #: 1SNK505910R0000

TE Internal Description: ES4

[View on TE.com >](#)



Connectors > Terminal Blocks & Strips > Terminal Block & Strip Accessories > Terminal Block & Strip Insulating Accessories



Insulating Accessory Type: **End Section Cover**

For Use with Block or Strip Style: **Screw Clamp Terminal Blocks**

Operating Temperature Range: **-55 – 110 °C [-67 – 230 °F]**

Features

Product Type Features

Insulating Accessory Type	End Section Cover
---------------------------	-------------------

Body Features

Product Weight	2.2 g[.077 oz]
Plastic & Resin Material Type	Polyamide
Primary Product Color	Dark Gray

Dimensions

Product Depth	33.7 mm[1.327 in]
Product Spacing	2.2 mm[.087 in]
Product Height	50.9 mm[2.004 in]

Usage Conditions

Storage Temperature Range	-55 – 110 °C[-67 – 230 °F]
Installation Temperature Range	-5 – 40 °C[23 – 104 °F]
Operating Temperature Range	-55 – 110 °C[-67 – 230 °F]

Operation/Application

For Use with Block or Strip Style	Screw Clamp Terminal Blocks
-----------------------------------	-----------------------------

Industry Standards

IP Rating	IP20
UL Flammability Rating	UL 94V-0

Product Compliance


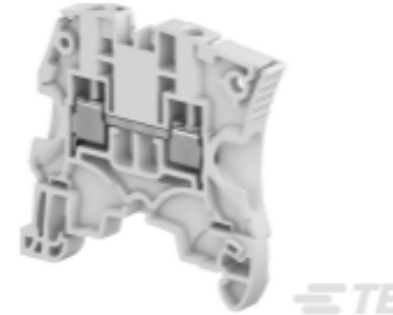
[For compliance documentation, visit the product page on TE.com>](#)

EU RoHS Directive 2011/65/EU	Compliant
EU ELV Directive 2000/53/EC	Not Yet Reviewed
China RoHS 2 Directive MIIT Order No 32, 2016	No Restricted Materials Above Threshold
EU REACH Regulation (EC) No. 1907/2006	Current ECHA Candidate List: JUL 2019 (201) Candidate List Declared Against: JUL 2019 (201) Does not contain REACH SVHC
EU REACH Regulation (EC) No. 1907/2006	Current ECHA Candidate List: JUL 2019 (201) Candidate List Declared Against: JUL 2019 (201)
Halogen Content	Not Yet Reviewed for halogen content
Solder Process Capability	Not reviewed for solder process capability

Product Compliance Disclaimer

This information is provided based on reasonable inquiry of our suppliers and represents our current actual knowledge based on the information they provided. This information is subject to change. The part numbers that TE has identified as EU RoHS compliant have a maximum concentration of 0.1% by weight in homogenous materials for lead, hexavalent chromium, mercury, PBB, PBDE, DBP, BBP, DEHP, DIBP, and 0.01% for cadmium, or qualify for an exemption to these limits as defined in the Annexes of Directive 2011/65/EU (RoHS2). Finished electrical and electronic equipment products will be CE marked as required by Directive 2011/65/EU. Components may not be CE marked. Additionally, the part numbers that TE has identified as EU ELV compliant have a maximum concentration of 0.1% by weight in homogenous materials for lead, hexavalent chromium, and mercury, and 0.01% for cadmium, or qualify for an exemption to these limits as defined in the Annexes of Directive 2000/53/EC (ELV). Regarding the REACH Regulations, TE's information on SVHC in articles for this part number is still based on the European Chemical Agency (ECHA) 'Guidance on requirements for substances in articles' (Version: 2, April 2011), applying the 0.1% weight on weight concentration threshold at the finished product level. TE is aware of the European Court of Justice ruling of September 10th, 2015 also known as O5A (Once An Article Always An Article) stating that, in case of 'complex object', the threshold for a SVHC must be applied to both the product as a whole and simultaneously to each of the articles forming part of its composition. TE has evaluated this ruling based on the new ECHA "Guidance on requirements for substances in articles" (June 2017, version 4.0) and will be updating its statements accordingly.

Compatible Parts

 <p>TE Model / Part # 1SNK505010R0000 ZS4</p>	 <p>TE Model / Part # 1SNK505020R0000 ZS4-BL</p>	 <p>TE Model / Part # 1SNK505030R0000 ZS4-OR</p>	 <p>TE Model / Part # 1SNK505060R0000 ZS4-YL</p>
--	---	---	---



TE Model / Part #
1SNK505061R0000
ZS4-GN



TE Model / Part #
1SNK505062R0000
ZS4-RD



TE Model / Part #
1SNK505063R0000
ZS4-PR



TE Model / Part #
1SNK505064R0000
ZS4-BR



TE Model / Part #
1SNK505065R0000
ZS4-WH



TE Model / Part #
1SNK505066R0000
ZS4-BK



TE Model / Part #
1SNK505150R0000
ZS4-PE



TE Model / Part #
1SNK505310R0000
ZS4-S



TE Model / Part #
1SNK505311R0000
ZS4-S-T2



TE Model / Part #
1SNK505312R0000
ZS4-S-T2.3



TE Model / Part #
1SNK505313R0000
ZS4-SP



TE Model / Part #
1SNK505314R0000
ZS4-SP-T2



TE Model / Part #
1SNK505320R0000
ZS4-S-BL



TE Model / Part #
1SNK505321R0000
ZS4-S-T2-BL



TE Model / Part #
1SNK505330R0000
ZS4-S-OR



TE Model / Part #
1SNK505331R0000
ZS4-S-T2-OR

Customers Also Bought



TE Model / Part #
1SNK900001R0000
BAM4



TE Model / Part #
1SNK505010R0000
ZS4



TE Model / Part #
1SNK505020R0000
ZS4-BL



TE Model / Part #
1SNK505150R0000
ZS4-PE



Documents

CAD Files

3D PDF

3D

Customer View Model

[ENG_CVM_CVM_1SNK505910R0000_A.2d_dxf.zip](#)

English

Customer View Model

[ENG_CVM_CVM_1SNK505910R0000_A.3d_igs.zip](#)

English

Customer View Model

[ENG_CVM_CVM_1SNK505910R0000_A.3d_stp.zip](#)

English

By downloading the CAD file I accept and agree to the [Terms and Conditions](#) of use.

Datasheets & Catalog Pages

[ENTRELEC Terminal Blocks Catalogue \(RUS\)](#)

ES4

English

[SNK SERIES TERMINAL BLOCKS](#)

English

[ENTRELEC Terminal Block - Master Catalog](#)

English