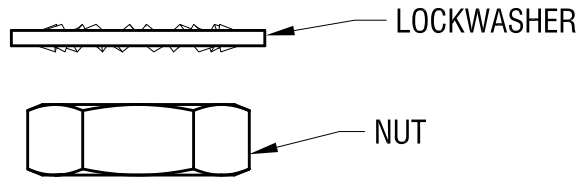
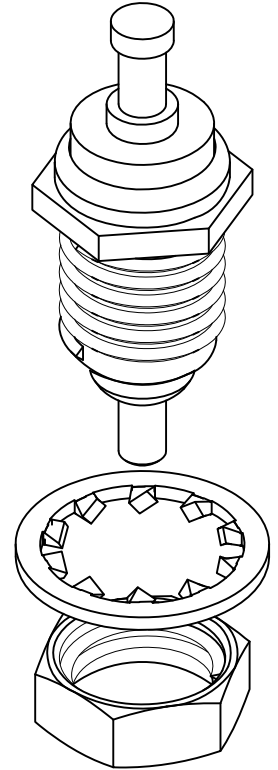
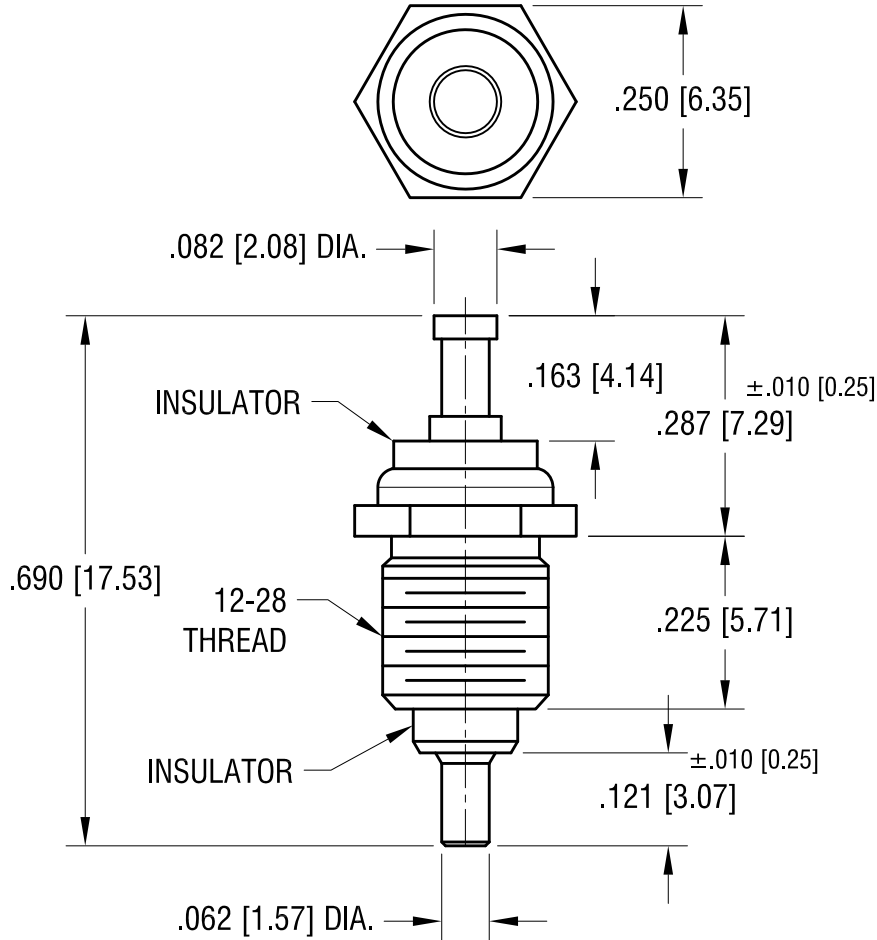


THIS DOCUMENT IS THE PROPERTY OF KEYSTONE ELECTRONICS CORP. AND SHALL NOT BE REPRODUCED, DISTRIBUTED OR USED AS A BASIS FOR MANUFACTURE WITHOUT PRIOR WRITTEN PERMISSION FROM KEYSTONE ELECTRONICS CORP.



**NOTES:**

1. PIN: MAT'L - BRASS, MATTE TIN PLATE
2. BUSHING: MAT'L - PTFE (TEFLON)  
COLOR: WHITE
3. BODY: MAT'L - BRASS, NICKEL PLATE
4. WASHER: MAT'L - PHOSPHOR BRONZE  
NICKEL PLATE
5. NUT: MAT'L - BRASS, NICKEL PLATE

10.7.09	CHANGE AS PER ECN 09-143	B
5.08.08	CHANGE AS PER ECN 08-106	A
DATE	DESCRIPTION	REV.

<b>KEYSTONE ELECTRONICS CORP.</b>			
www.keyelco.com • ASTORIA, N.Y. 11105-2017 • Tel (718) 956-8900			
PART NAME <b>THREADED FEED-THRU TERMINAL</b>			
MATERIAL <b>AS NOTED</b>			
FINISH <b>AS NOTED</b>		DRN BY NT	DATE 2.22.08
		APP'D LN	SCALE 4X
TOLERANCES DECIMAL ANGULAR ± 1° UNLESS OTHERWISE SPECIFIED	INCH [MM] ± .005 [± 0.15]	CODE C	DWG NO. <b>11362</b>