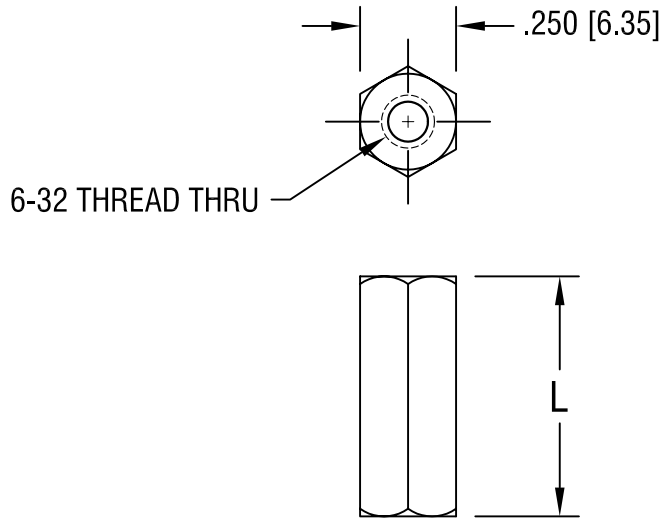


THIS DOCUMENT IS THE PROPERTY OF
KEYSTONE ELECTRONICS CORP. AND
SHALL NOT BE REPRODUCED, DISTRIBUTED
OR USED AS A BASIS FOR MANUFACTURE
WITHOUT PRIOR WRITTEN PERMISSION
FROM KEYSTONE ELECTRONICS CORP.



| PART NO. | 'L' DIM. |
|----------|---------------|
| 1922A | .375 [9.53] |
| 1922B | .500 [12.70] |
| 1922C | .750 [19.05] |
| 1922D | 1.000 [25.40] |

| | | | |
|--|---------------------------|-----------------|-----------------|
| KEYSTONE ELECTRONICS CORP. | | | |
| ASTORIA, N.Y. 11105-2017 | | | |
| PART NAME HEX STAINLESS THREADED STANDOFF | | | |
| MATERIAL STAINLESS STEEL | | | |
| FINISH --- | | DRN BY BOONE | DATE 1.11.05 |
| | | APPD | SCALE 2X |
| TOLERANCES | INCH [MM] | CODE | DWG NO. |
| DECIMAL | $\pm .005$ [± 0.15] | C/M | 1922A-D |
| ANGULAR | $\pm 1^\circ$ | | |
| UNLESS OTHERWISE SPECIFIED | | | |

| DATE | DESCRIPTION | REV. |
|------|-------------|------|
| | | |