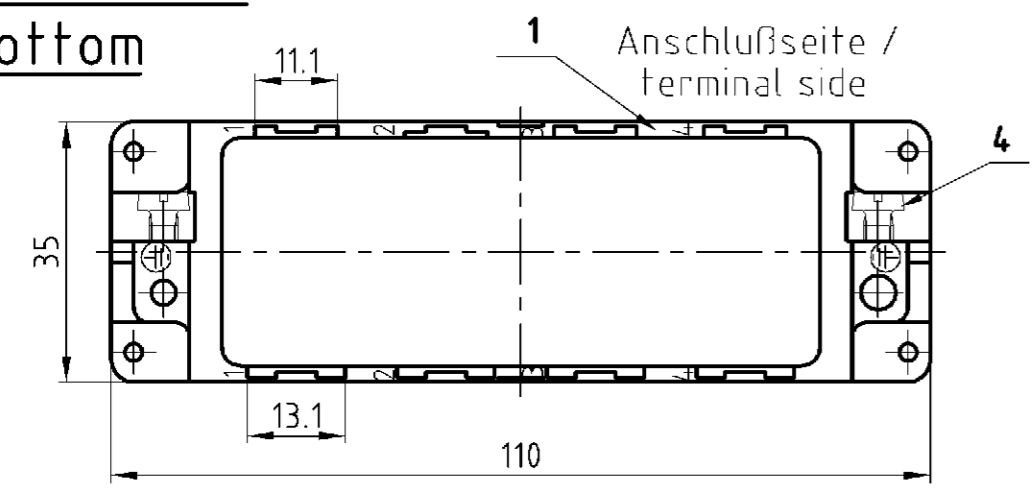
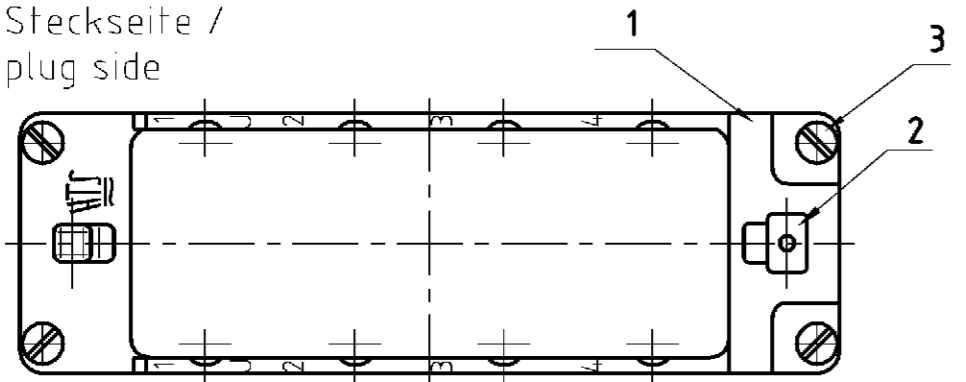


**Unterteil / bottom**

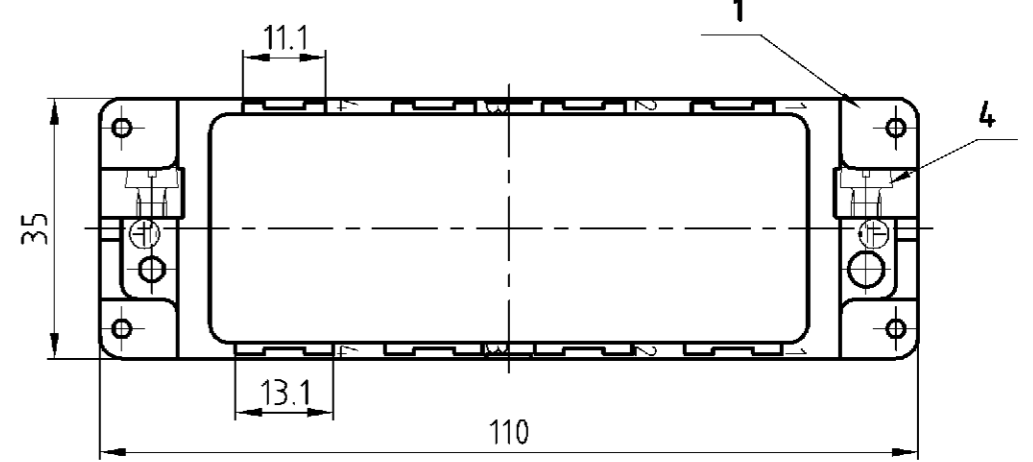


**Steckseite / plug side**

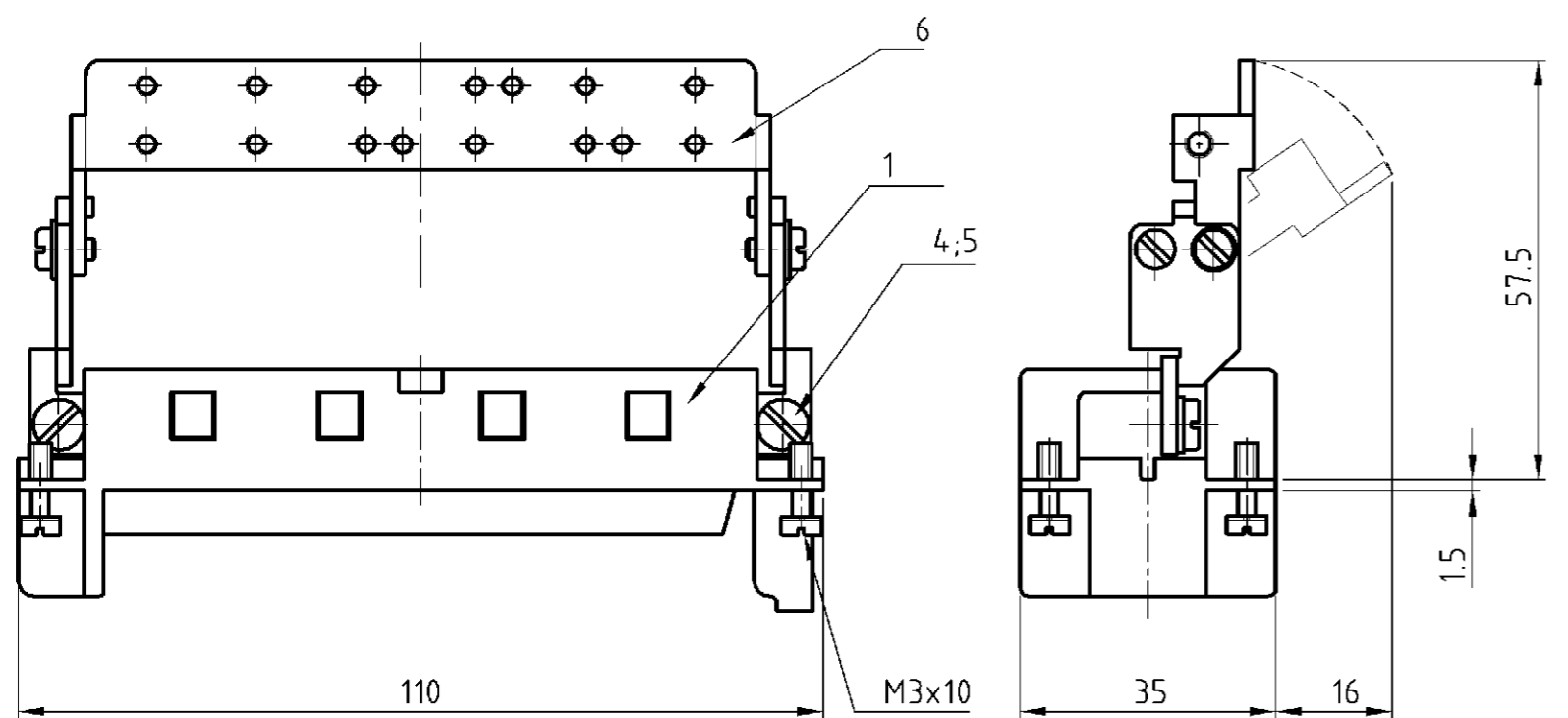
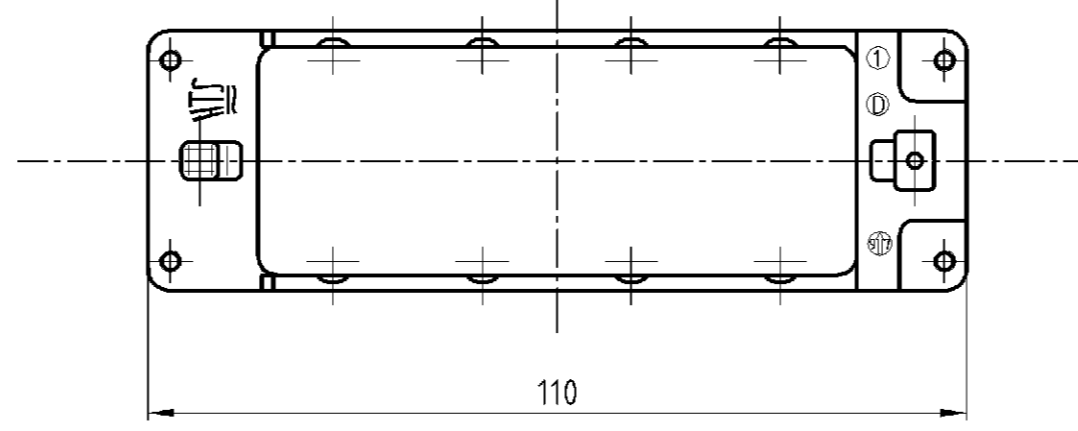
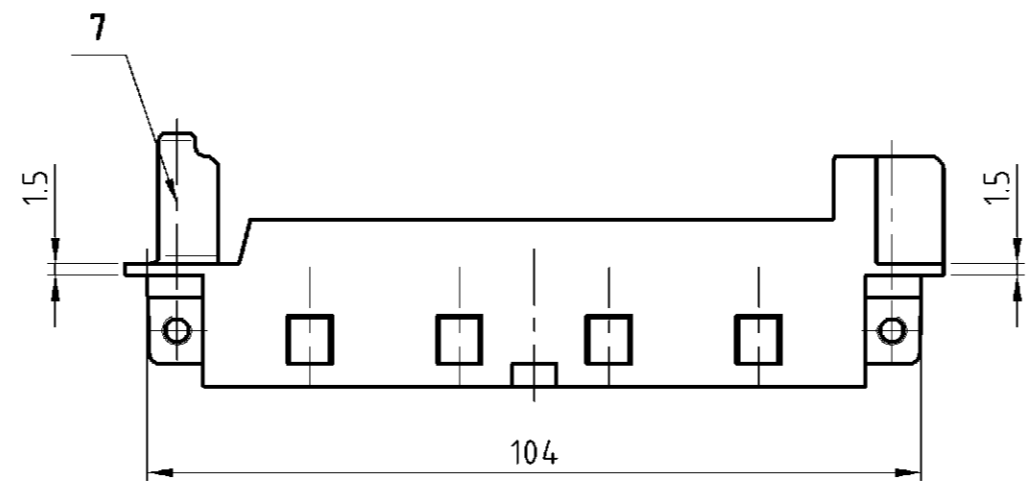
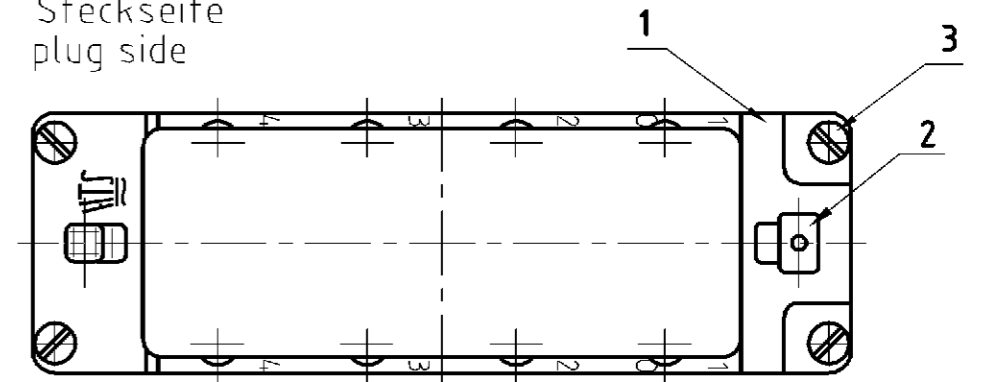


**Oberteil / upper part**

Anschlußseite terminal side



**Steckseite plug side**



OBSOLETE						1		2		ITEM NO. Pos.	NOTES / BEMERKUNGEN
0-70	60	50	40	30	20-1	DESCRIPTION / BENENNUNG	MATERIAL	SURFACE/COLOR			
					1	Modulrahmen Oberteil module frame upper part	Zink-Leg./ zinc alloy	Verzinkt/ tin plated	7	Sonder für Griffblech/ special for grip	
					1 1	Schirmbügel schwenkbar/ screen termination roofing	Stahl/steel	Verzinkt/ tin plated	6		
					2 2	Federring/ spring lock washer	Stahl/steel	Verzinkt/ tin plated	5	DIN 128 - A4	
					2 2 2 2 2 2	Zylinderschraube mit Schlitz/ cylinder screw with slit	Messing/brass	Vernickelt/ nickel plated	4	DIN EN ISO 1207	
					4 4 4 4 4 4	Befestigungsschraube/ fixing screw	Stahl/steel	Vernickelt/ nickel plated	3	M3x10	
					1 1 1 1 1 1	Erdkontaktfeder/ spring f. grounding cont.	Bronze/ bronze	Vernickelt/ nickel plated	2		
					1 1 1 1 1 1	Modulrahmen/ module frame	Zink-Leg./ zinc alloy	Verzinkt/ tin plated	1		

MDL2-GR-U-8-B5-8	MDL2-GR-O-8-B5-8	MDL2-GR-O-8/GB-B1-4	MDL2-GR-U-8/SB-B1-4	MDL2-GR-O-8/SB-B1-4	MDL2-GR-U-8-B1-4	MDL2-GR-O-8-B1-4
ORDERING TEXT/BESTELLTEXT						
DIMENSIONS: DIMENSIONEN: mm TOLERANCES UNLESS OTHERWISE SPECIFIED: ALLGEMEIN TOLERANZEN p. ISO 8015 m. ISO 2768 - mH - E n. DIN 16901 - 14.0 0 PLC 1 PLC 2 PLC 3 PLC ANGLES / WINKEL ° FINISH / OBERFLÄCHE / FARBE						
MATERIAL: 1 FINISH / OBERFLÄCHE / FARBE: 2						

DWN	wroblewski	06.10.2003
CHK	Baum	06.10.2003
APVD		
PRODUCT SPEC		
APPLICATION SPEC		
WEIGHT	110g, 150g	
CUSTOMER DRAWING		

NAME	MDL - Frame size 8	
NAME	MDL - Rahmen Gr. 8	
SIZE	A2	
CAGE CODE	00779	
DRAWING NO. ZEICHNUNGS-NR.	1108780	
RESTRICTED TO NUR FUER		
MASSSTAB	1:1	
BLATT	1	
OF VON	1	
REV		B3