

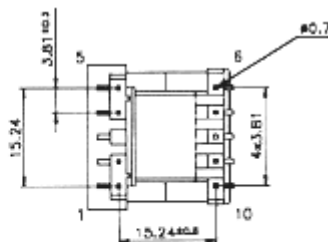
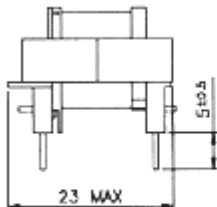
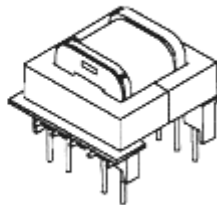
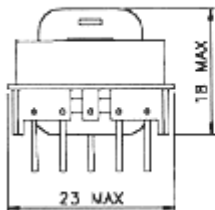


Control IC Manufacturer	Control IC P/N	Input voltage	Power	Frequency
Power Integrations	TOP243P	185 - 265 Vrms	24 w	132 kHz
Power Integrations	TOP243P	85 - 265 Vrms	15 w	132 kHz

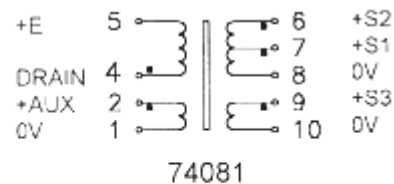
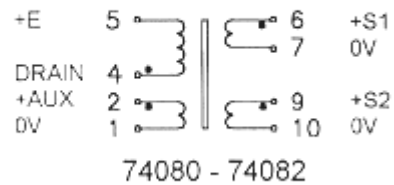
SIZE EF20							
2 or 3 OUTPUTS : 5 /5v or 12/12v or 3.3+5/12 v - FLYBACK TRANSFORMER							
MYRRA Part N°	Output Power max	Windings					
			Pins	Turns	Voltage	Current max	Inductance (+/-10%)
74080	24w	Pri	4 - 5	86	80 - 135 (VOR)	1.0 Apeak	1000µH
		Aux	2 - 1	12	11 - 18 Vdc	0.3 Adc	
		S1	6 - 7	10	9 - 15 Vdc	1.5 Adc	
		S2	9 - 10	10	9 - 15 Vdc	1.5 Adc	

Note for 74080 : S1 and S2 can be connected in series or in parallel

- Primary / Secondary Insulation \geq 4000V
- Primary Auxiliary Insulation \geq 1500V
- Creepage distances Primary / secondary \geq 8mm
- Ambient temperature $<$ 50°C
- Construction conforms to CEI950, CEI335, CEI61558 for reinforced insulation
- Exclusively uses UL94-VO listed materials



Bottom View (Pin side)



PIN 3 Removed
PCB Drilling Diameter = 1.2mm