

Miniature, 6 digit LCD PCB mount totalising counter designed for minimal power requirement



Shown with panel mount bezel

7000/7000AS



Shown as PCB mount

UL E 135458 LR 96702

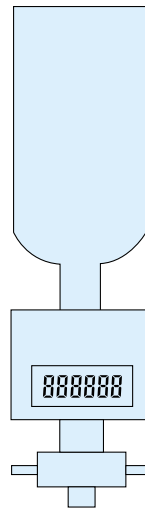
These miniature 6 digit totalising counters are suitable for either direct PCB mounting, or panel mounting with bezel supplied.

- Uses the latest CMOS circuitry to achieve quiescent current consumption of less than 5µA.
- 6mm black character high contrast LCD display.
- Bi-directional counting (7000AS model).
- Counts pulses up to 10kHz frequency.
- External reset input.
- UL and cUL/CSA approved.

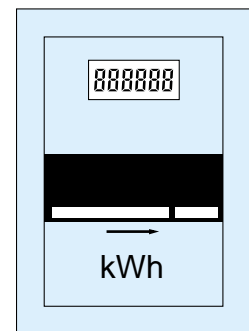
The 7000/7000AS can also be configured to count electro-mechanical contact closure events using an external resistor and capacitor. Similarly the supply voltage can be increased using an external resistor and 3V zener diode. See instruction leaflet for details.

Typical Application

- *Event counting
- *Position, length and distance measuring applications
- *Direct PCB mounting where limited space is available
- *Low power battery applications
- *Portable equipment



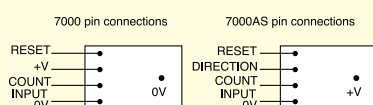
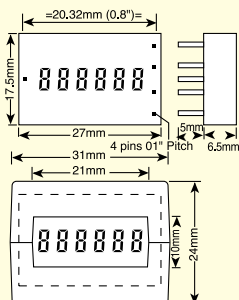
Drinks Optics



Electricity Meters

Dimensions

27.6mm(W) x 17.7mm(H) x 6.5mm(D)
Panel cutout 29.4mm x 22mm



Specification

Supply Voltage 2.6 - 3.4VDC
Current Consumption 5µA quiescent, 10µA at 10kHz
Display 6 digit black LCD, 6mm characters with leading zero blanking
Count Range 999999 display rollover to 0
Count Input 10kHz maximum, negative edge triggered, 0.7V threshold, 50µS minimum pulse length, TTL/CMOS Compatible
Reset Input Negative edge triggered, 0.7V threshold, 15mS minimum pulse length, TTL/CMOS Compatible
Direction Input (7000AS model) Add=logic 1, Subtract=logic 0 (0V)
Operating Temp. -10°C to +60°C
Storage Temp. -10°C to +60°C
Material Clear polycarbonate
Environmental Protection IP40/DIN40050
Weight 7.5 grams

Ordering Information

Order by type number:

7000 Uni-directional, count up
7000AS Bi-directional, (Add/Subtract)

Supplied with full instructions