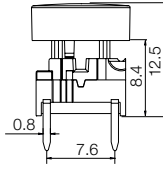
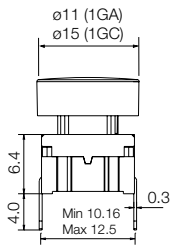


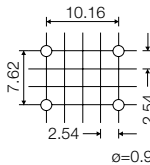
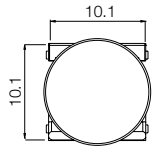
Technical Data:

- through-hole or SMD
- 50mA/24VDC
- single pole/momentary
- 10.000.000 operations life time
- IP67 sealing
- temperature range:
low temp: -40/+115°C
high temp: -40/+160°C

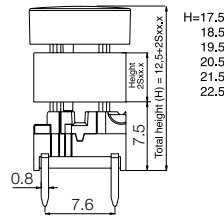
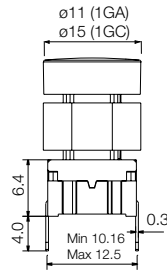
Dimensions (through-hole)



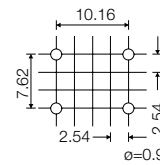
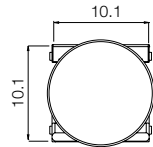
PCB layout



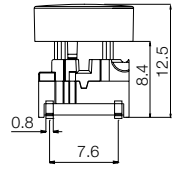
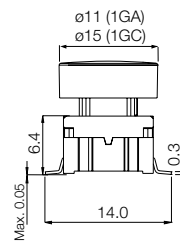
Dimensions (w/extender)



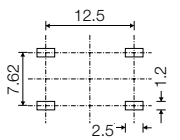
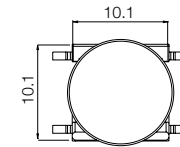
PCB layout



Dimensions (SMD)



PCB layout

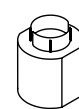


HOW TO ORDER

3 F + **1 G A 0 9** + **2 S 0 9 - . 0**

Switch **Mounting** **L 6** low temp.
T through-hole **H 9** high temp.
S surface mount

Cap black **Extender black Height**



1 G C 0 9

Cap black



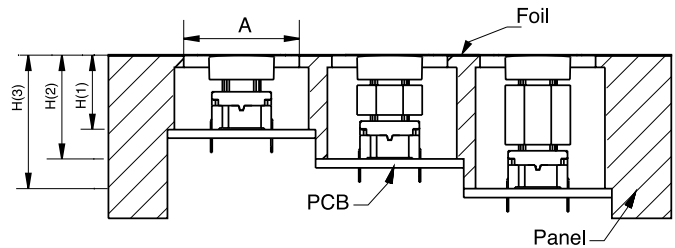
05.0 (Optional)
06.0 Adds 5-10mm
07.0 to total height.
08.0
09.0
10.0

Standard versions:

3FTL6, 3FTH9, 3FSH9, 3FSH9R

Keypad	Variable Extender	H (height) mm	Example
1GA/1GC		12.5	H (1)
1GA/1GC	2S09-05.0	17.5	H (2)
	2S09-06.0	18.5	
	2S09-07.0	19.5	
	2S09-08.0	20.5	
	2S09-09.0	21.5	
	2S09-10.0	22.5	
			H (3)

H = Building height



Building heights below 12.5 mm - Please see Multimec versions 3C and 3E.

All 2S09 extenders are stackable giving the possibility to match most building heights.

A = We recommend you to allocate enough space for travel of the foil and leave the area free from adhesive.
Switch travel alone = 1mm.

H = We recommend you to calculate this dimension from the top of the PCB to the inner top of the panel.

Dimensions (mm)
Unless otherwise specified,
all tolerances ±0.2

Ordering example: 3FTL6 +1GA09 or 3FTL6 + 2S09 -07.0 + 1GC09