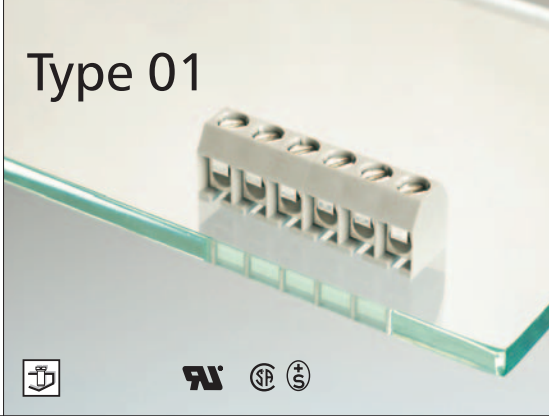
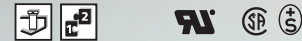
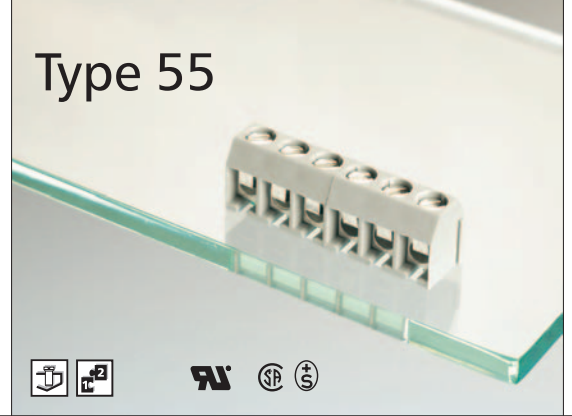




Type 01



Type 55



Note for wire range

Additional wire sizes and/or combinations of same size wires as follows:

Type 01 and Type 55

- #(1) Wire range extended to No. 30 AWG for factory-wiring
- ++ Two same size wires No. 22 - 18 AWG Cu Sol/Str for field-wiring; 30 - 18 AWG Cu Sol/Str factory-wiring

Description Type 01

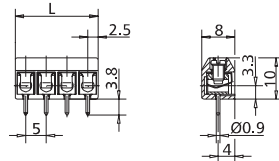
Screw type terminal block, solderable, centerline 5 mm / 0.197 inches, horizontal wire entry, wire protector

Technical Data Type 01

- V / A / AWG 300 / 15 / 22 - 14 #(1), ++ (see note)
- V / A / AWG 300 / 15 / 22 - 14 #(1), ++ (see note)
- Screw torque max. 7 lbs.-in
- 0.08 - 1.5 mm² 125 V / 2.5 kV / 3 / 13 A
Insulation co-ordination according to IEC 664-1
Clearance and creepage distance ≥ 2.6 mm
Screw torque max. 0.5 Nm

- Wire diameter single wire 0.3 - 1.6 mm
- Wire strip length 6 mm / 0.236 in.
- Solder pin 0.9 mm / 0.035 in. dia. recommended pc board hole dia. 1.2 mm / 0.047 in.
- Solder pin length 3.8 mm / 0.150 in.
- Pole size 2 to 22
- Color grey

Dimensions in mm 1 mm = 0.0394 in.



$L = (\text{pole size} - 1) \times \text{centerline} + 5 \text{ mm} / 0.197 \text{ in.}$

Description Type 55

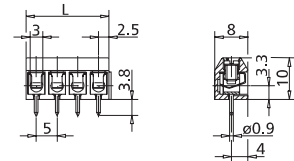
Screw type terminal block, solderable, centerline 5 mm / 0.197 inches, horizontal wire entry, wire protector, modular

Technical Data Type 55

- V / A / AWG 300 / 15 / 22 - 14 #(1), ++ (see note)
- V / A / AWG 300 / 15 / 22 - 14 #(1), ++ (see note)
- Screw torque max. 7 lbs.-in
- 0.08 - 1.5 mm² 125 V / 2.5 kV / 3 / 13 A
Insulation co-ordination according to IEC 664-1
Clearance and creepage distance ≥ 2.6 mm
Screw torque max. 0.5 Nm

- Wire diameter single wire 0.3 - 1.6 mm
- Wire strip length 6 mm / 0.236 in.
- Solder pin 0.9 mm / 0.035 in. dia. recommended pc board hole dia. 1.2 mm / 0.047 in.
- Solder pin length 3.8 mm / 0.150 in.
- Pole size 2 to 4
- Color grey

Dimensions in mm 1 mm = 0.0394 in.



$L = (\text{pole size} - 1) \times \text{centerline} + 5 \text{ mm} / 0.197 \text{ in.}$

Part numbers (P/N)

Type 01

centerline 5 mm / 0.197 inches

P/N 310011

Complete the part number by adding the pole size.

| | | | | | | | |
|----|----|----|----|----|----|----|----|
| | 02 | 03 | 04 | 05 | 06 | 07 | 08 |
| 09 | 10 | 11 | 12 | 13 | 14 | 15 | 16 |
| 17 | 18 | 19 | 20 | 21 | 22 | | |

Type 01

centerline 10 mm / 0.394 inches

P/N 310012

| | | | | | | | |
|----|----|----|----|----|----|----|----|
| | 02 | 03 | 04 | 05 | 06 | 07 | 08 |
| 09 | 10 | 11 | | | | | |

- Standard pole sizes
- Available on demand. Minimum order quantity 5000 poles per item.

Part numbers (P/N)

Type 55

centerline 5 mm / 0.197 inches

P/N 310551

Complete the part number by adding the pole size.

| | | | | | | | |
|--|----|----|----|--|--|--|--|
| | 02 | 03 | 04 | | | | |
| | | | | | | | |

- Standard pole sizes
- Available on demand. Minimum order quantity 5000 poles per item.