

P/N: BL0102-14-34

SUPER BRIGHT RED

SUPER BRIGHT GREEN

Features

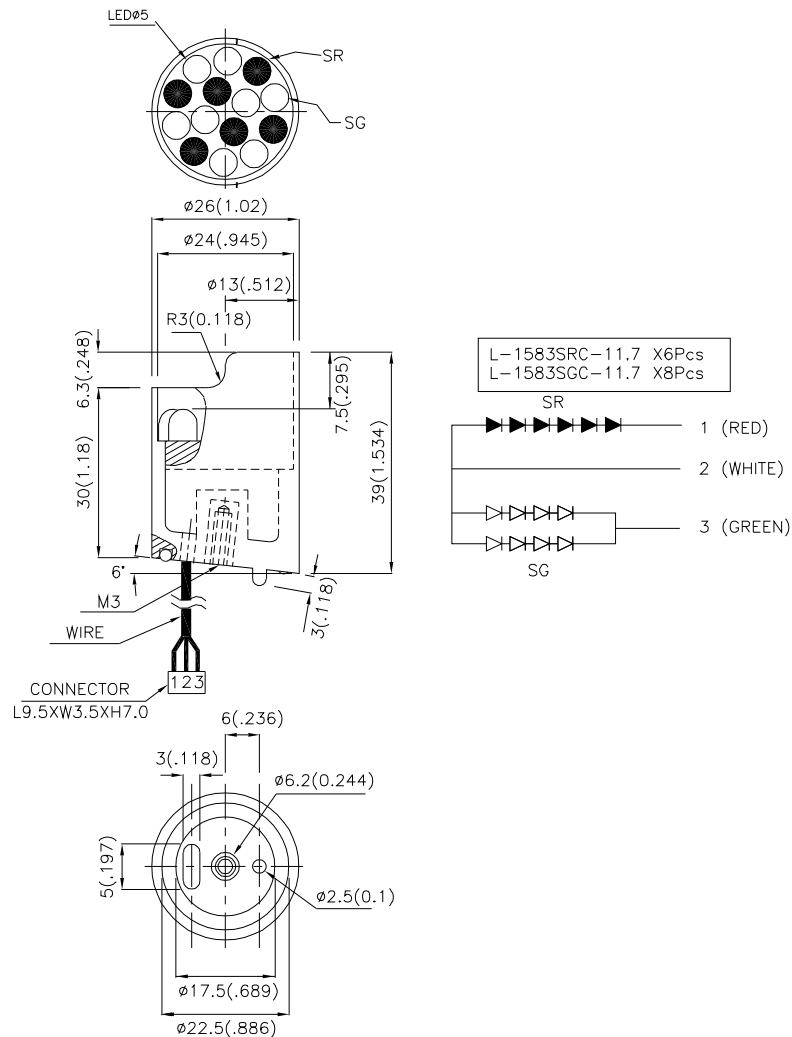
- HIGH VISIBILITY.
- EMITTING COLOR: BLUE .
- NO.OF BUILT-IN 5mm LED LAMPS: SUPER BRIGHT RED 6 PCS,SUPER BRIGHT GREEN 8 PCS.
- WATERPROOF PACKAGE WITH HOOD SUITABLE FOR OUTDOOR AND INDOOR INFORMATION BOARDS.
- RoHS COMPLIANT.

Description

The Super Bright Red source color devices are made with Gallium Aluminum Arsenide Red Light Emitting Diode.

The Super Bright Green source color devices are made with Gallium Phosphide Green Light Emitting Diode.

Package Dimensions



Notes:

1. All dimensions are in millimeters (inches).
2. Tolerance is $\pm 0.25(0.01)$ " unless otherwise noted.
3. Specifications are subjected to change without notice.

Electrical / Optical Characteristics at T_A=25°C

| Symbol | Parameter | Device | Color | Min | Typ. | Max. | Units | Test Conditions |
|-------------------|--------------------------|--------------|--|-------------|--------------|----------|----------|--|
| I _v | Luminous Intensity | BL0102-14-34 | Super Bright Red Super Bright Green | 1500 650 | 2800 1600 | - | mcd | I _F =20mA I _F =40mA |
| 2θ _{1/2} | Viewing Angle | | Super Bright Red Super Bright Green | - | 40 | - | deg | - |
| V _F | Forward Voltage | | Super Bright Red Super Bright Green | - | 11 8.8 | 15 10 | V | I _F =20mA I _F =40mA |
| λ _{peak} | Peak Wavelength | | Super Bright Red Super Bright Green | - | 660 565 | | nm | I _F =20mA I _F =40mA |
| λ _D | Dominant Wavelength | | Super Bright Red Super Bright Green | - | 640 568 | | nm | I _F =20mA I _F =40mA |
| Δλ _{1/2} | Spectral Line Half-width | | Super Bright Red Super Bright Green | - | 20 30 | | nm | I _F =20mA I _F =40mA |
| I _R | Reverse Current | | Super Bright Red Super Bright Green | | | - | 30 30 | μA |

Absolute Maximum Ratings at T_A=25°C

| Parameter | Type | Units |
|-----------------------|----------------|-------|
| Power dissipation | 860 | mW |
| DC Forward Current | 80 | mA |
| Reverse Voltage | 5 | V |
| Operating Temperature | -40°C To +70°C | |
| Storage Temperature | -40°C To +85°C | |