

MINIATURE PUSH SWITCHES

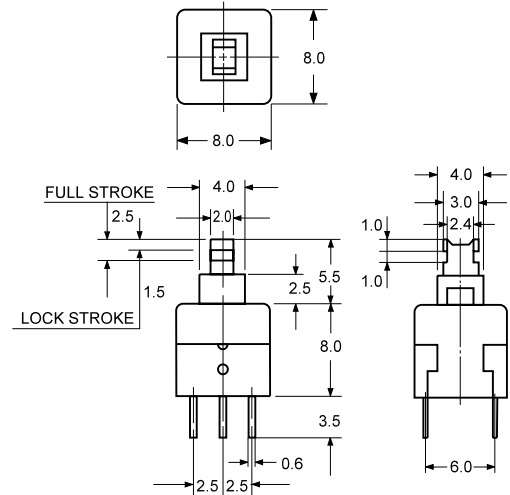


● SERIES P1

■ RATING

0.1A 30VDC

■ DIMENSIONS (Unless otherwise specified, a tolerance of ± 0.4 mm applies to all dimensions.)



■ SPECIFICATIONS

- Operating force 150gf (different force on request)
- Travel Pre travel 1.5 ± 0.3 mm
Total travel 2.5 ± 0.5 mm
- Contact resistance (initial) $100\text{m}\Omega$ Max.
- Insulation resistance (at 500VDC) $100\text{M}\Omega$ Min.
- Service life
Mechanical (no load) 100,000 cycles Min. at a rate of 10 cycles per minute
Electrical (full load) 10,000 cycles Min. at a rate of 10 cycles per minute
- Storage temperature -25°C to $+65^\circ\text{C}$

■ OPERATING FORCE

	NON LOCK	LOCK
L:	90 ± 30 g	130 ± 50 g
S:	150 ± 50 g	180 ± 50 g

■ APPLICATION

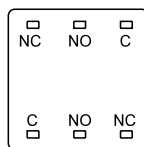
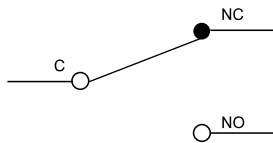
Telephone, computer, tester.

■ TOP BUTTON DIMENSIONS

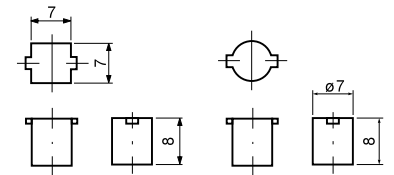
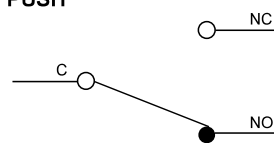
1: 7X7X8mm

3: $\varnothing 7 \times 8$ mm

FREE



PUSH



■ ORDERING INFORMATION

P 1 1
P 1 1

S NO-TOP BUTTON
S — **1**

L

SERIES PREFIX	C O D E	TYPE	C O D E	OPERATING FORCE	C O D E	TOP BUTTON TYPE	C O D E	TOP BUTTON COLOR		
	0	NON LOCK	L	LIGHT	1	7 x 7 x 8mm	R	RED	W	WHITE
	1	LOCK	S	STANDARD	3	$\varnothing 7 \times 8$ mm	L	BLUE	E	GREEN
	2	NON LOCK CLICK					B	BLACK	Y	YELLOW