



**G-Sicherungshalter**  
für G-Sicherungseinsätze  
5 x 20 mm

**Fuse-holders**  
for fuse-links  
5 x 20 mm

**Porte-fusibles**  
pour fusibles cartouches  
5 x 20 mm



Bemess'spannung 250 V  
Bemessungsstrom 6,3/10 A  
Prüfspannung 3 kV  
Schutzart IP 40

Rated voltage 250 V  
Rated current 6.3/10 A  
Test voltage 3 kV  
Protection standard IP 40

Tension nominale 250 V  
Courant nominal 6,3/10 A  
Tension d'essai 3 kV  
Classe de protection IP 40

Montage  
Frontplatte  
Loch-Ø 12,7 mm  
Verdrehungsschutz  
Gegenmutter SW 16

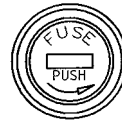
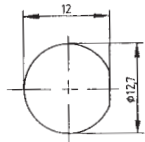
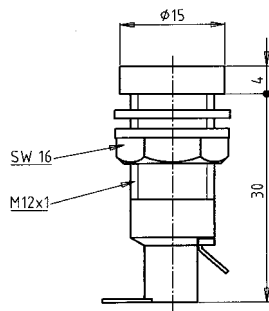
Mounting  
Panel  
Hole Ø 12.7 mm  
with flat as shown  
Locknut SW 16

Montage  
Panneau  
Trout Ø 12,7 mm  
Protection anti-rotation  
Ecrou SW 16

Verschlusskappe  
Renkverschluss  
Anschlüsse  
Lötbar  
Approbation(en)  
SEMKO (6,3 A)  
VDE, UL, CSA (10 A)

Fuse-carrier  
Bayonet cap  
Connections  
Solder  
Approval(s)  
SEMKO (6.3 A)  
VDE, UL, CSA (10 A)

Cabochon  
Tête baionnette  
Connexions  
À souder  
Homologation(s)  
SEMKO (6,3 A)  
VDE, UL, CSA (10 A)



Type

199090